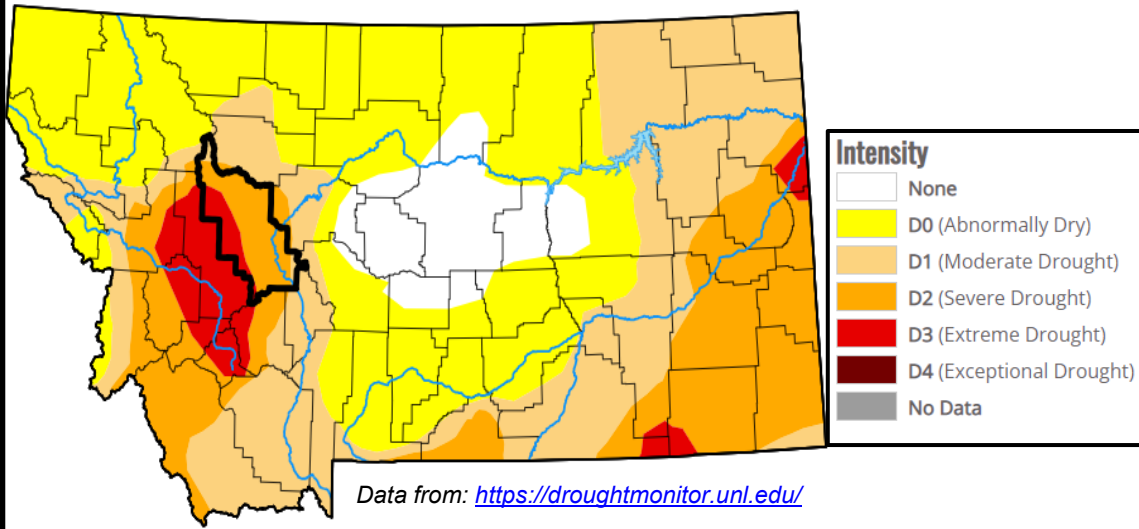


# Upper Missouri Water Supply Report

## February 10, 2025



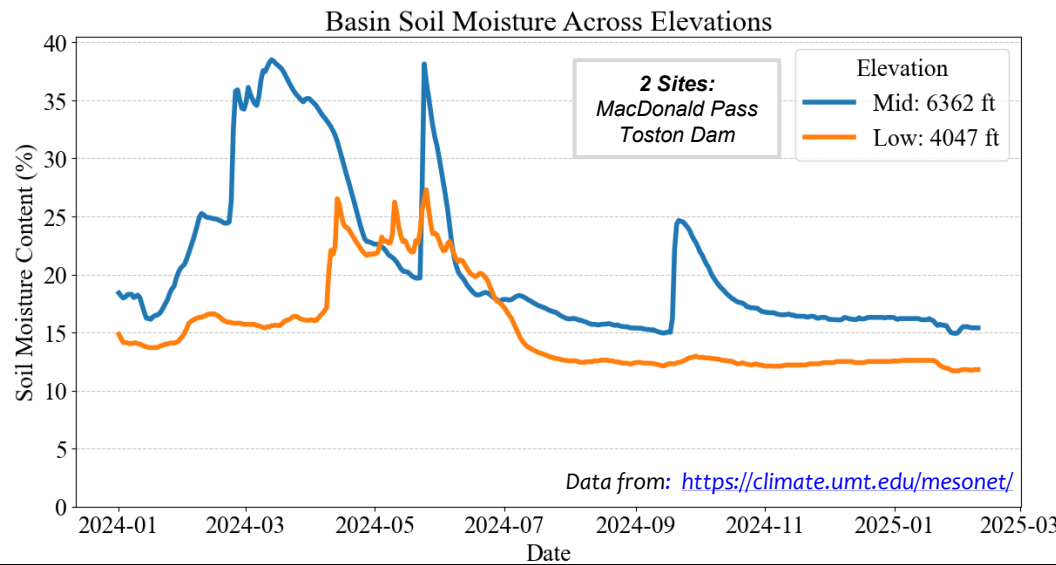
The Montana Department of  
**Natural Resources  
& Conservation**



Data from: <https://droughtmonitor.unl.edu/>

### OVERALL DROUGHT

- Majority of the watershed in D2.
- Headwater counties have a larger portion of D1 while western portion of Lewis and Clark in D3.
- Consistent over past few months.



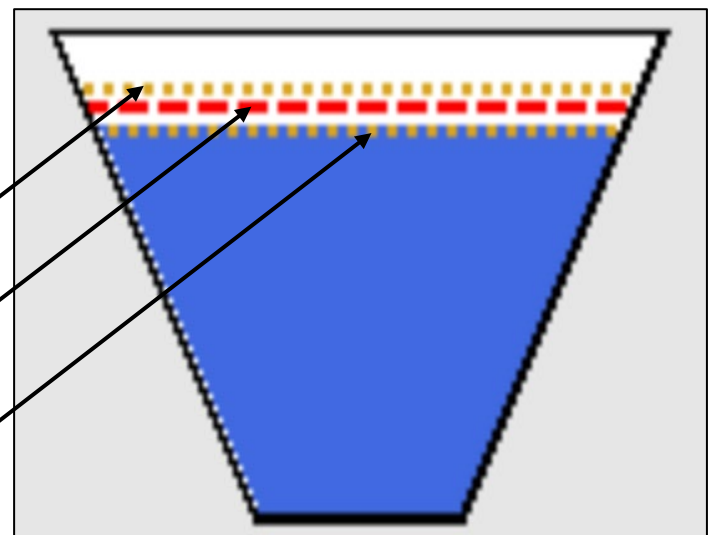
Data from: <https://climate.umt.edu/mesonet/>

### SOIL MOISTURE

- Soil moisture slightly below last year.
- Precipitation events shown in summer and fall drive infiltration.
- Steady soil moisture after summer declines. Cold temps lock in the soil moisture for the winter.

### RESERVOIR STORAGE

- Canyon Ferry is **74%** full
- Current Storage: 1,399,150 AF
- Total Storage: 1,886,950 AF
- **93%** of the 30-year average



90<sup>th</sup> Percentile

Average

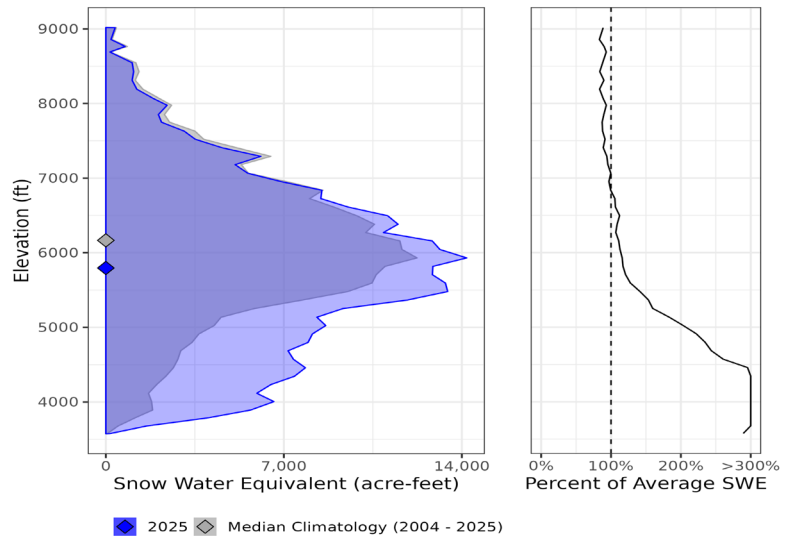
10<sup>th</sup> Percentile

Data from:  
<https://www.arcgis.com/apps/dashboard/s/81aaec3e74024ce6b9a5e50caa20984e>

# SNOWPACK

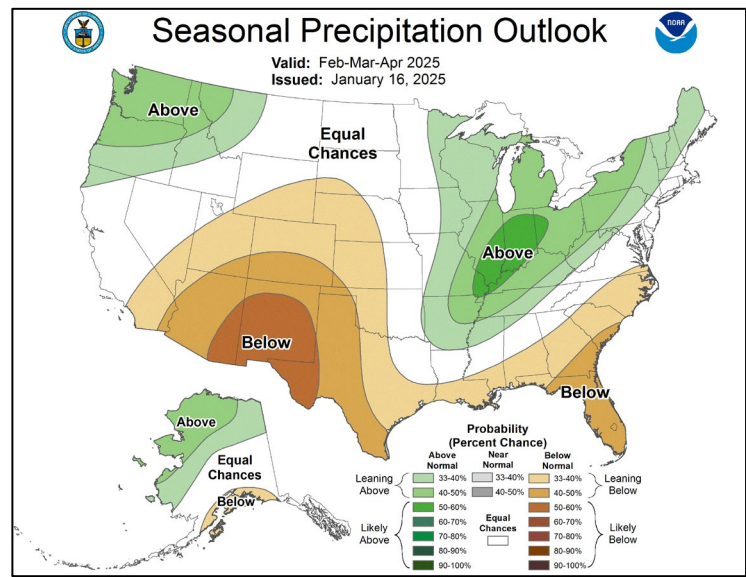
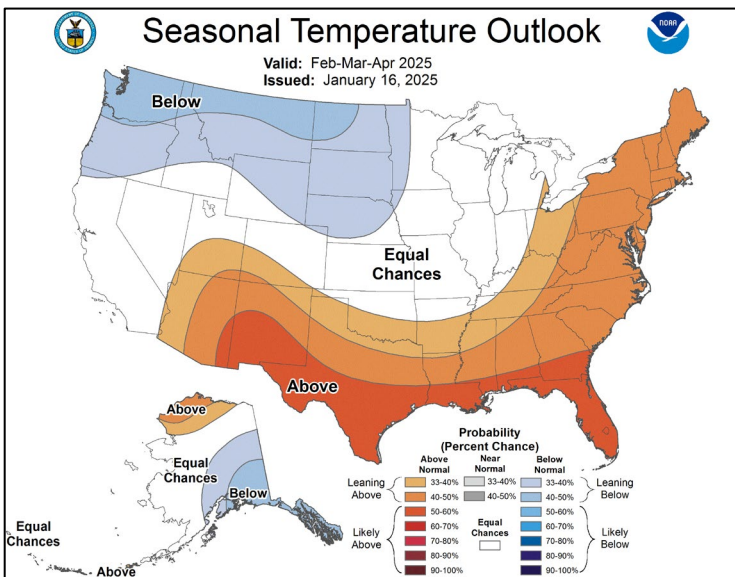
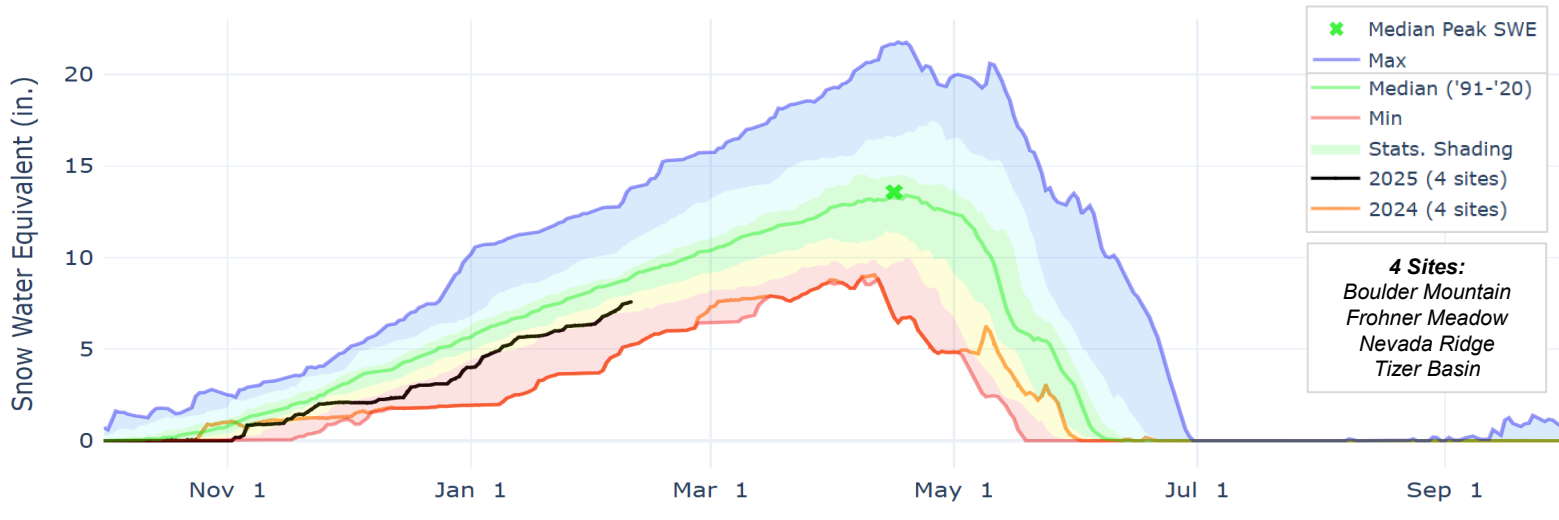
- Snow Water Equivalent (SWE) represents the total volume available in the snowpack (shown in both graphs).
- Snowpack in **low elevation** is **well above** the median compared to **high elevation** snowpack is **slightly below** in the Upper Missouri (right graph).
- Snowpack across four SNOTEL sites is **15% below** the median for the period of 1991-2020 (below graph) but **higher** than **2024 water year**.

Hypsometric-SWE for Upper Missouri (HUC8: 10030101)  
2025-02-10 (135% of Normal)



## SNOW WATER EQUIVALENT IN HELENA VALLEY

Data from: <https://nwcc-apps.sc.egov.usda.gov/basin-plots/#MT>



Data from: <https://www.cpc.ncep.noaa.gov/>

## WINTER OUTLOOK (FEB-APRIL)

- La Niña: Seasonal forecasts below average temperatures and above average precipitation.

Produced by:  
Maddie McKeefry  
Hydrologist, Montana DNRC  
Madeline.mckeefry@mt.gov