

RESOLUTION 1990 - 105

A RESOLUTION TO ADJUST ASSESSMENTS FOR LOT 7-A
TOWN VIEW ESTATES SUBDIVISION

WHEREAS, on May 15, 1990, the Board of County Commissioners passed Resolution 1990-58, a resolution to create Rural Improvement District No. 90-9; and

WHEREAS, assessments for road maintenance within the District are based upon lot area, not to exceed 19,000 square feet per lot; and

WHEREAS, Lots 6, 7, and 8 of Town View Estates Subdivision have been aggregated into a single new lot, lot 7-A, pursuant to an amended plat recorded as Document No. 457819/E; and

WHEREAS, the owner of Lot 7-A, First Missionary Baptist Church, received three assessments for road maintenance under Property Identification Nos. 20081, 20082, and 20083.

NOW, THEREFORE BE IT RESOLVED, by the Lewis and Clark County Board of County Commissioners that it acknowledges that Lots 6, 7, and 8 have been lawfully aggregated into a single new lot, Lot 7-A and the subject property should receive only a single assessment for road maintenance under Rural Improvement District No. 90-9.

BE IT FURTHER RESOLVED, that the road maintenance assessments under Rural Improvement District No. 90-9 shall be waived for the two properties presently identified by Property Identification Nos. 20081 and 20083, but shall still apply to Property Identification No. 20082.

Dated this 13th day of November, 1990

LEWIS AND CLARK COUNTY
BOARD OF COUNTY COMMISSIONERS

Linda Stoll-Anderson
Linda Stoll-Anderson, Chairwoman

Dave Fuller
Dave Fuller, Member

Jim Campbell
Jim Campbell, Member

ATTEST:

Sue Bartlett
Sue Bartlett, Clerk of the Board

FILE: 1510 Church.res

20th, Helena, Montana, being the owners of Lots 6, 7 and 8 of TOMM VIEW ESTATES located in the Northeast 1/4 of Section 36, T.14N., R.10E., Lewis and Clark County, Montana, do hereby certify that the

east corner of lot 8 of the TOMM VIEW ESTATES and the southeast corner of lot 7A; a distance of 150.0 feet to the southeast corner of lot 7A; a distance of 254.65 feet to a point on the line between lot 7A and lot 8; a bearing of N 07° 32' 47" W a chord distance of 172.77 feet to the Point of Beginning; a distance of 40.00 feet to the Point of Beginning; a distance of 1.44 Acres.

11/11/2011, 1990.

County and Clark County, Montana, do hereby certify that the plat of LOT 7A of TOMM VIEW ESTATES is correct in form and do hereby approve the same and that said originals be filed by the Clerk of the County.

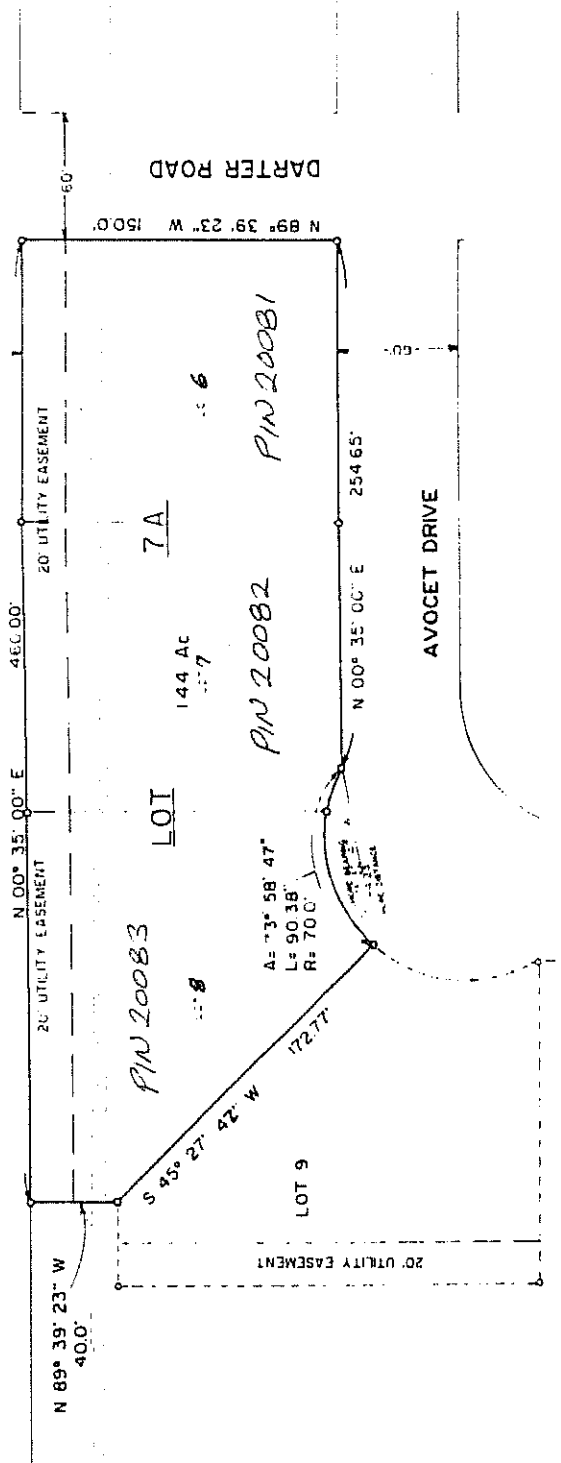
Liisa S. Caldwell
Chairman, County Commissioners

L. Caldwell
County Commissioners

County Commissioners

Doc No. 457819/E

NORTH MONTANA AVE.



OFFICE OF COUNTY TREASURER

Section 76-3-611(1)(b), MCA, that no real property taxes have been levied on this land and the owners of this land are delinquent.

(PIN) 20011, 20082, 20083