

RESOLUTION 1990 - 89

A RESOLUTION TO CREATE A ROAD IMPROVEMENT DISTRICT
FOR ROAD MAINTENANCE IN SUNNY VISTA SUBDIVISION

WHEREAS, on July 30, 1990, the Sunny Vista Property Owners Association requested that the Board of County Commissioners create a Road Improvement District for the purpose of funding on-going maintenance of the road network currently maintained by the Association; and

WHEREAS, the Association provided a map of the roads to be maintained and the benefitting properties, cost estimates for the proposed maintenance, and a petition signed by 65% of the affected property owners; and

WHEREAS, the Board of County Commissioners has the authority to propose Road Improvement Districts for the purpose of funding road improvements and/or maintenance, pursuant to Section 7-14-2901, et. seq., MCA; and

WHEREAS, a resolution of intent to create Road Improvement District No. 90-13 was adopted by the Board of County Commissioners on July 31, 1990, as Resolution No. 1990-78; and

WHEREAS, legal notice of the passage of Resolution No. 1990-78 was posted in the proposed district, mailed to property owners in the proposed district, and printed in the local newspaper in accordance with the statutory requirements; and

WHEREAS, written protests were received by the Clerk and Recorder said protests constituted sixteen percent (16%) of the cost of the proposed work; and

WHEREAS, on September 11, 1990, the Board of County Commissioners held a public hearing and proceeded to hear all protests, determined that there was not sufficient protest to bar proceedings, accepted certain protests regarding benefitting lots, and denied other protests submitted.

NOW, THEREFORE, BE IT RESOLVED by the Lewis and Clark County Board of County Commissioners that it does hereby create Road Improvement District No. 90-13 for the purpose of funding road maintenance within said district.

BE IT FURTHER RESOLVED that said district will include all parcels of the Sunny Vista Subdivision except for the following parcels that will not benefit: Lots 46, 47, 48, 49, 52, 53, 54, 55, 56, 58, 59, 60, 61, 91, 92, 95, 96, 97, and 98; the benefitting lots are identified on Exhibit A, attached hereto and made a part hereof.

BE IT FURTHER RESOLVED that the maintenance shall include snow plowing, grading, graveling, drainage control, and other maintenance and repair as necessary to preserve the road surfaces, and that such maintenance shall be administered by the County Surveyor, unless the Board enters into a contractual agreement with the Sunny Vista Property Owners Association.

BE IT FURTHER RESOLVED that assessments for the maintenance shall be assessed upon each parcel within the district, as identified by the County Property Identification Number. There shall be two categories of assessments based upon the

assessed value of properties and the proportionate share of benefits received. Developed parcels with improvements or personal property shall be assessed at a higher rate than undeveloped parcels without improvements or personal property. Estimated annual maintenance costs are approximately \$5,250. Based upon the assessment method described, annual individual parcel assessments will be approximately \$100 for improved parcels and approximately \$25 for unimproved parcels. All funds collected herein shall be spent solely for activities within the proposed improvement/maintenance district.

DATED this 25th day of September, 1990

LEWIS AND CLARK COUNTY
BOARD OF COUNTY COMMISSIONERS

Linda Stoll-Anderson

Linda Stoll-Anderson, Chairwoman

David E. Fuller

David E. Fuller, Member

Jim Campbell

Jim Campbell, Member

ATTEST:

Sue Bartlett

Sue Bartlett, Clerk of Board

FILE: 2708 wp51/Sunyvst.res

461773

P

1990 SEP 27 AM 2:48

SEP 27 4:00 PM 1990

Chirley McDuck

No fee

EXHIBIT A

Boundary of Sunny Vista
Subdivision Road
Improvement District

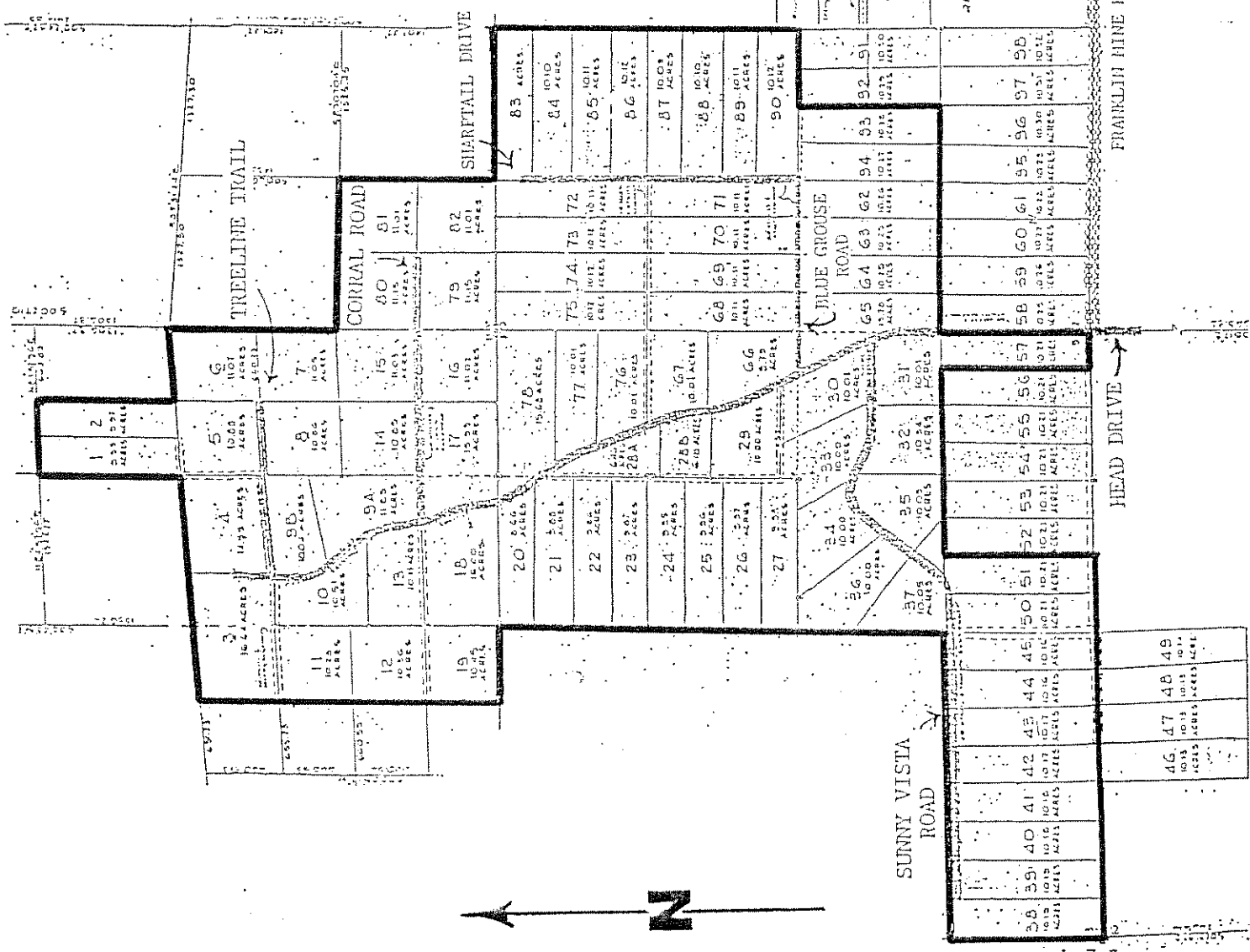
Road #1 Head Drive

Road #2 Sunny Vista Road

Road #3 Blue Grouse Road
Sharptail Drive

Road #4 Corral Road

Road #5 Treeline Trail



HEAD DRIVE

FRANKLIN MINE ROAD

TUMBLENEED DRIVE

SUNNY VISTA
ROAD

TREELINE TRAIL

CORRAL ROAD

SHARPTAIL DRIVE

BLUE GROUSE
ROAD

83 ACRES

84 ACRES

85 ACRES

86 ACRES

87 ACRES

88 ACRES

89 ACRES

90 ACRES

80 ACRES

81 ACRES

82 ACRES

78 ACRES

79 ACRES

80 ACRES

81 ACRES

82 ACRES

83 ACRES

84 ACRES

85 ACRES

86 ACRES

87 ACRES

88 ACRES

89 ACRES

90 ACRES

20 ACRES

21 ACRES

22 ACRES

23 ACRES

24 ACRES

25 ACRES

26 ACRES

27 ACRES

28 ACRES

29 ACRES

30 ACRES

31 ACRES

32 ACRES

33 ACRES

34 ACRES

35 ACRES

36 ACRES

37 ACRES

38 ACRES

39 ACRES

40 ACRES

41 ACRES

42 ACRES

43 ACRES

44 ACRES

45 ACRES

46 ACRES

47 ACRES

48 ACRES

49 ACRES

50 ACRES

