

RESOLUTION 2006 - 38

**A RESOLUTION TO CREATE RURAL IMPROVEMENT DISTRICT 2006-3 FOR THE SOUTH BOUNDARY ACRES II MAJOR SUBDIVISION**

WHEREAS, the South Boundary Acres II Major Subdivision is located in the N ½ of Section 29, T10N, R2W; and

WHEREAS, the preliminary plat approval granted by the Board of County Commissioners for the subdivision included at condition that a mechanism for road maintenance be established for the subdivision; and

WHEREAS, a petition has been received from the developer, Archie Taylor, requesting that the Board of County Commissioners create a Rural Improvement District for the South Boundary Acres II Major Subdivision, in accordance with the condition of subdivision approval; and

WHEREAS, the developer is the sole owner of the lands to be included in the District; and

WHEREAS, the Board of County Commissioners has the authority to order and create the improvement district based upon receipt of a petition containing the consent of all of the owners of property to be included in the district, pursuant to Section 7-12-2101(2), MCA.

NOW, THEREFORE, BE IT RESOLVED by the Lewis and Clark County Board of County Commissioners that it does hereby approve the requested creation of the South Boundary Acres II Rural Improvement District No. 2006-3 for the purpose of equitably funding road maintenance within said district.

BE IT FURTHER RESOLVED that the district will include all lots in the South Boundary Acres II Major Subdivision, shown on Exhibit "A", attached hereto and made a part hereof.

BE IT FURTHER RESOLVED that the maintenance could include, but is not limited to, grading, snow plowing, signage, weed control, and other maintenance and repair as necessary to preserve the road surfaces, and that such maintenance shall be administered by the County. The County will serve only to coordinate the necessary work, collect the assessments, and disburse payments for the district; it is anticipated that the maintenance would be performed by a private contractor.

BE IT FURTHER RESOLVED that the annual costs for said maintenance are \$2,772.00. Each lot would be assessed a flat fee of \$145.89 per lot per year. All funds collected for the maintenance district shall be spent solely for the road maintenance activities on roads in the South Boundary Acres II Major Subdivision.



BE IT FURTHER RESOLVED that the district shall remain in effect in perpetuity or until such action by the Board of County Commissioners otherwise dissolves the district.

DATED this 30 day of March, 2006.

BOARD OF COUNTY COMMISSIONERS  
LEWIS AND CLARK COUNTY

*Michael Murray for:*  
Anita L. Varone, Chair

ATTEST:

*Paulette J. DeHart*  
Paulette J. DeHart, Clerk of Board

Attachment: Exhibit "A"



Lewis & Clark County

COUNTY

**3104546**

Page: 2 of 3  
03/30/2006 01:15P

Bk-M34 Pg-2589

# EXHIBIT "A"



**3104546**

Page: 3 of 3  
03/30/2006 01:15P  
Bk-M34 Pg-2599

Lewis & Clark County

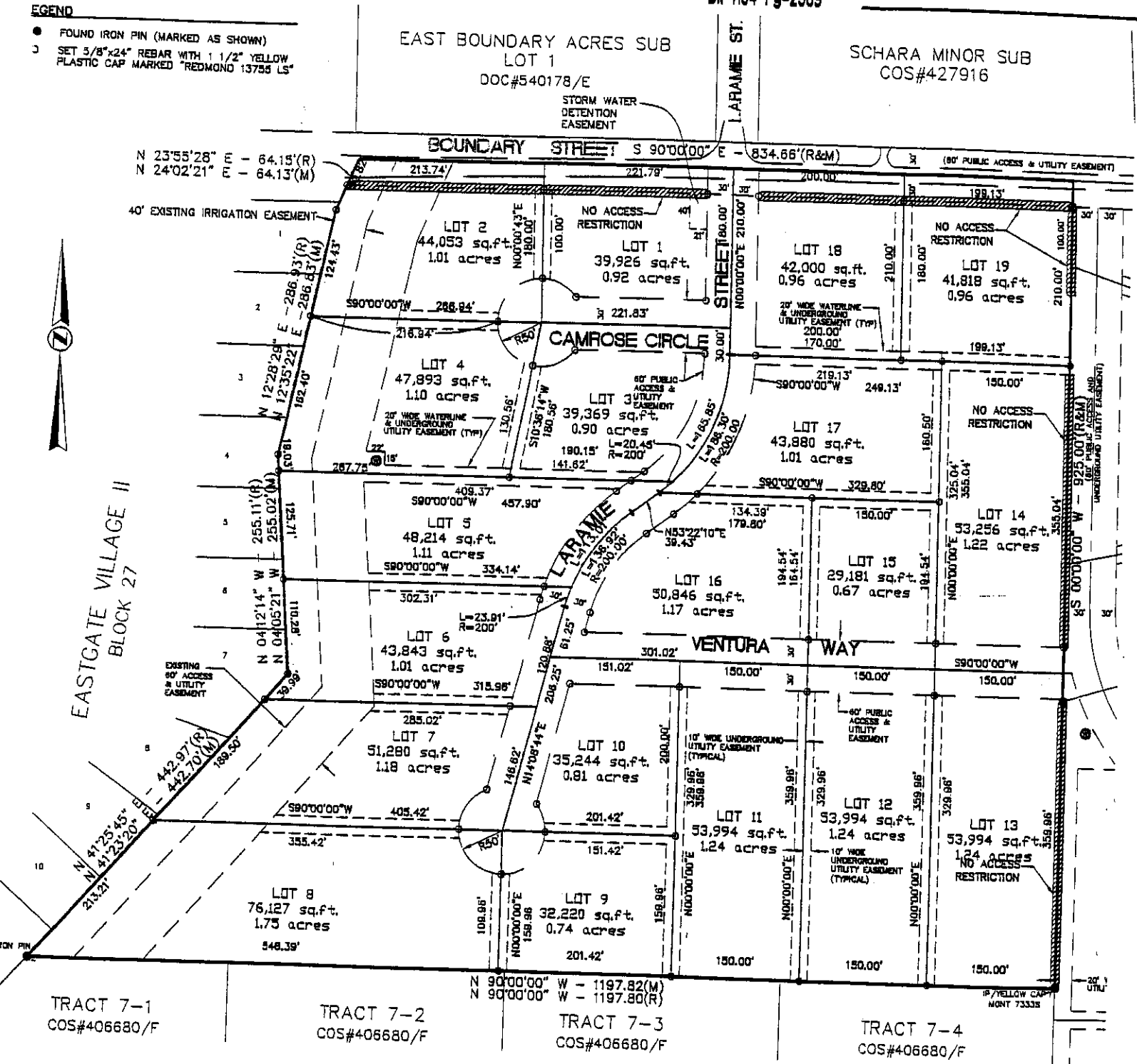
COUNTY

**EGEND**

- FOUND IRON PIN (MARKED AS SHOWN)
- SET 5/8"x24" REBAR WITH 1 1/2" YELLOW PLASTIC CAP MARKED "REDMOND 13755 LS"

EAST BOUNDARY ACRES SUB  
LOT 1  
DOC#540178/E

SCHARA MINOR SUB  
COS#427916



**FINAL PLAT OF  
SOUTH BOUNDARY ACRES -II**