

**A RESOLUTION OF INTENTION TO EXPAND THE BOUNDARIES OF
RURAL IMPROVEMENT DISTRICT 1993-2 TO INCLUDE THE LOTS IN
RANCHVIEW ESTATES, PHASE III**

WHEREAS, Ranchview Estates Major Subdivision is located in the NW 1/4 of Section 17, T11N, R3W, P.M.M.; and

WHEREAS, the preliminary plat approval granted by the Board of County Commissioners for Phase III of the Subdivision required that a mechanism for road maintenance be established for the subdivision; and

WHEREAS, the covenants for the Ranchview Estates Subdivision (Section XVI. STREETS) indicate that the roads shall be maintained by a rural improvement district and that each lot shall be included in the district and subject to an assessment; and

WHEREAS, Rural Improvement District (RID) No. 1993-2 was established as part of Ranchview Estates Subdivision, Phase I, and needs to be expanded to include Phase III; and

WHEREAS, Jerry Hamlin owns all the lots within Phase III and has expressed support for the expansion of RID 1993-2 to include Phase III of the Ranchview Estates Subdivision; and

WHEREAS, the Board of County Commissioners has the authority to propose Rural Improvement Districts for the purpose of funding road improvements and/or maintenance, pursuant to Section 7-12-2101, et. seq., MCA.

NOW, THEREFORE, BE IT RESOLVED by the Lewis and Clark County Board of County Commissioners that it does hereby establish its intention to expand the boundary of Rural Improvement District No. 1993-2 to include the lots in Phase III of the Ranchview Estates Subdivision and for the purpose of equitably funding road maintenance within said district. The district shall remain in effect in perpetuity or until such action by the Board of County Commissioners otherwise dissolves the district.

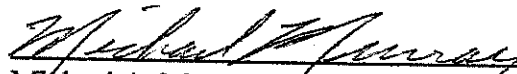
BE IT FURTHER RESOLVED that said expansion of the district shall include all lands developed as Phases IIIA and IIIB of the Ranchview Estates Major Subdivision, identified on Exhibit A, attached hereto and made a part hereof.

BE IT FURTHER RESOLVED that the maintenance activities shall be the same as RID No. 1993-2, including snow plowing, sanding, sweeping, drainage control, street identification and traffic control signing, crack sealing, resurfacing, and other maintenance and repair as necessary to preserve the road surfaces; the initial estimated annual cost for said maintenance within Phase III is \$1,800. It is anticipated that such maintenance shall be administered by the subdivision homeowners association under a contractual agreement with the Board of County Commissioners.

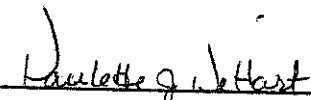
BE IT FURTHER RESOLVED that all lots would benefit and shall be assessed for the maintenance of the roads in the same manner as RID No. 1993-2. Developed lots shall be assessed a flat fee and undeveloped lots shall be assessed a lower flat fee (one-third the assessment for developed lots). Such assessments shall be based upon the assessed valuation of land, improvements, and personal property valuations to distinguish developed and undeveloped lots. Then, thresholds and limits of assessed valuation shall be applied resulting in a flat fee assessment for developed lots and a another flat fee assessment (one-third) for undeveloped lots. Based upon the assessment method described, annual individual lot assessments (approximate) shall be \$60 for developed lots and \$20 for undeveloped lots. All funds collected for the district shall be spent solely for the road improvement and maintenance activities within the proposed district.

DATED this 23rd day of April, 1998.

BOARD OF COUNTY COMMISSIONERS
LEWIS AND CLARK COUNTY


Michael A. Murray, Chairman

ATTEST:

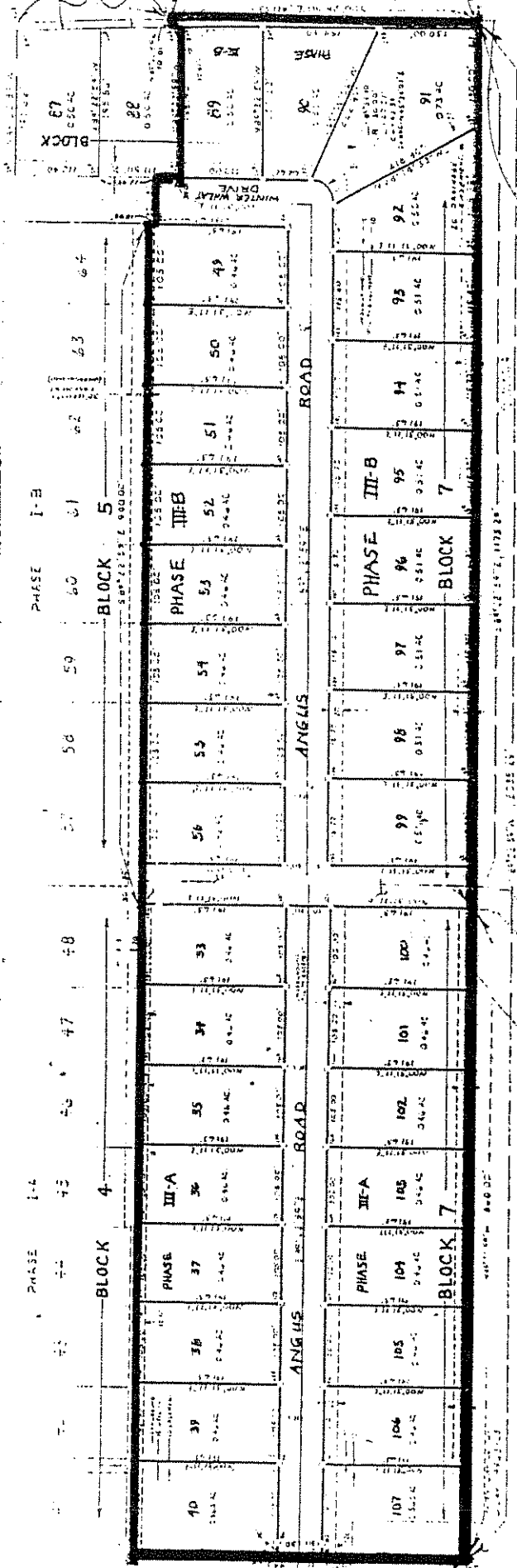

Paulette J. DeHart, Clerk of Board

File: 2718 Rnch3RID.Int

LAILED "A"

RANCHVIEW ESTATES, PHASE III TO BE INCLUDED IN RID 1993-2

Map - View Road



578695

PAULETTE DEHART CLK & REC
LEWIS & CLARK CO
MEMPHIS, TN

98 APR 29 AM 10:32

BOOK M 20 PAGE 5255

BY *Shirley McDuck*
No fee

INDEXED *D*

EMERGENCY ACCESS PERMIT
MAY BE OBTAINED FROM DISTRICT
ENGINEER FOR EXISTING DISTRICTS AND
DESIGNED BY PLAN OF THE
RANCHVIEW ESTATES
DIVISION, CHASE, TENN.



