

RESOLUTION 2006 - 137

**A RESOLUTION TO CREATE RURAL IMPROVEMENT
DISTRICT 2006-10 FOR THE GRAND VALLEY ESTATES SUBDIVISION**

WHEREAS, the Grand Valley Estates Subdivision is located in the SE ¼ of Section 18, T11N, R3W; and

WHEREAS, the preliminary plat approval granted by the Board of County Commissioners for the subdivision included at condition that a mechanism for road maintenance be established for the internal access roads; and

WHEREAS, a petition has been received from the developers, Tom and Kim Harrison, requesting that the Board of County Commissioners create a Rural Improvement District for the Grand Valley Estates Subdivision, in accordance with the condition of subdivision approval; and

WHEREAS, the developers are the sole owners of the lands to be included in the District; and

WHEREAS, the Board of County Commissioners has the authority to order and create the improvement district based upon receipt of a petition containing the consent of all of the owners of property to be included in the district, pursuant to Section 7-12-2101(2), MCA.

NOW, THEREFORE, BE IT RESOLVED by the Lewis and Clark County Board of County Commissioners that it does hereby approve the requested creation of the Grand Valley Estates Rural Improvement District No. 2006-10 for the purpose of equitably funding road maintenance within said district.

BE IT FURTHER RESOLVED that the district will include Lots 1 through 26 of the Grand Valley Estates Subdivision, shown on Exhibit "A", attached hereto and made a part hereof.

BE IT FURTHER RESOLVED that the initial maintenance could include, but is not limited to, road grading, snow removal, and other maintenance and repair as necessary to preserve the road surfaces, and that such maintenance shall be administered by the County. Additional maintenance for drainage facilities, weed control, signs and addition of gravel could be added in the future and at that time costs will be developed for those items. The County will serve only to coordinate the necessary work, collect the assessments, and disburse payments for the district; it is anticipated that the maintenance would be performed by a private contractor.

BE IT FURTHER RESOLVED that the annual costs for said maintenance are \$1,774.50. Each lot would be assessed a flat fee of \$68.25 per lot per year. All funds collected for the maintenance district shall be spent solely for the road maintenance activities on roads in the Grand Valley Estates Subdivision.



Lewis & Clark County

COUNTY

3119892

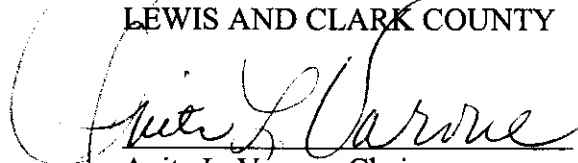
Page: 1 of 3
12/19/2006 03:02P

Bk-M35 Pg-7071

BE IT FURTHER RESOLVED that the district shall remain in effect in perpetuity or until such action by the Board of County Commissioners otherwise dissolves the district.

DATED this 19 day of December, 2006.

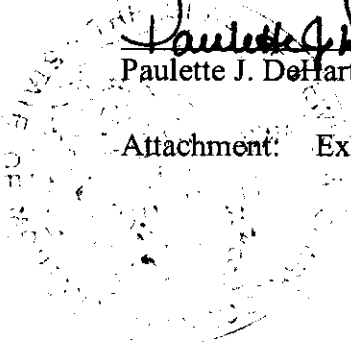
BOARD OF COUNTY COMMISSIONERS
LEWIS AND CLARK COUNTY


Anita L. Varone, Chair

ATTEST:


Paulette J. DeHart, Clerk of Board

Attachment: Exhibit "A"



3119892

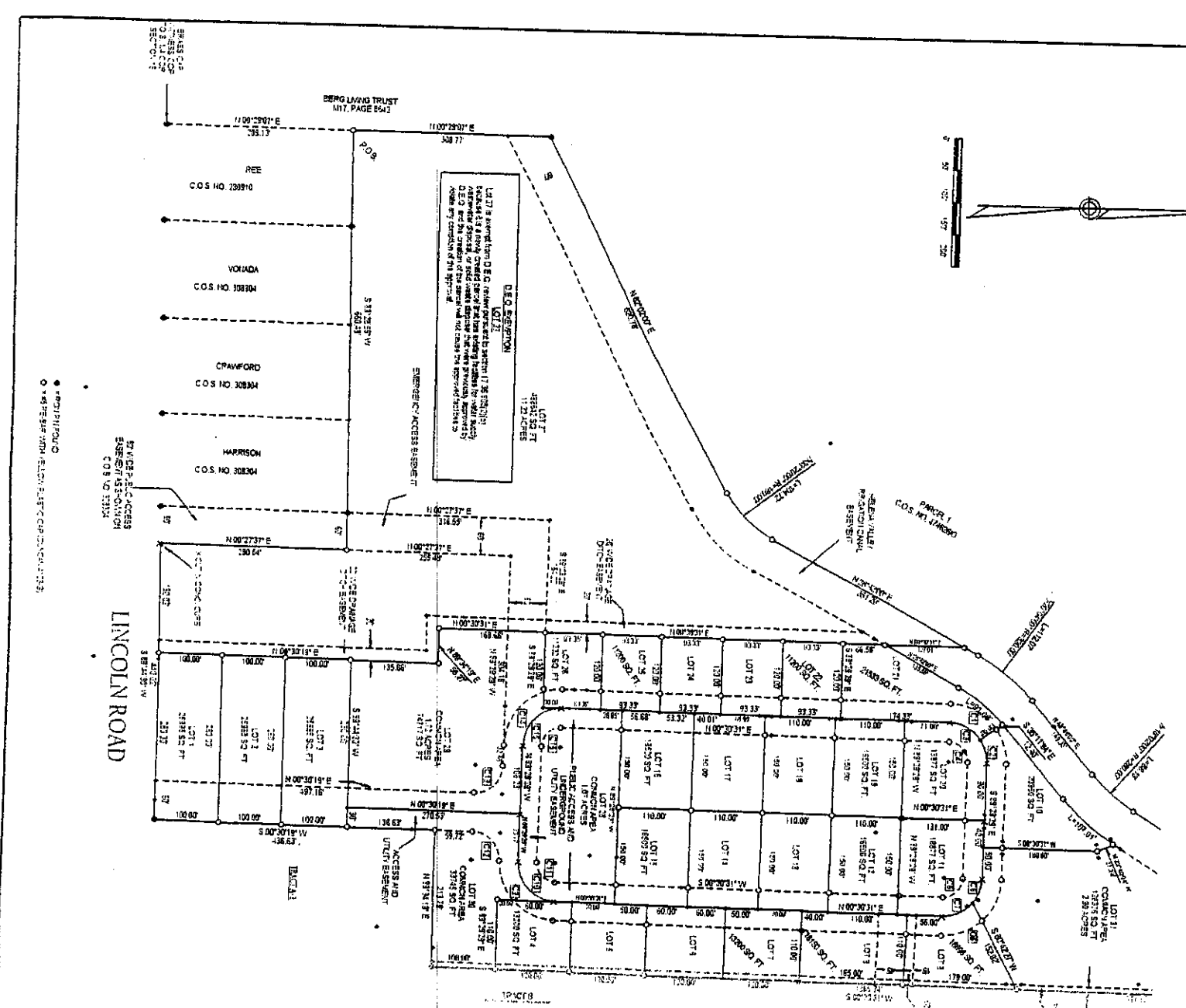
Page: 2 of 3
12/19/2006 03:02P

Lewis & Clark County

COUNTY

Bk-M35 Pg-7071

EXHIBIT "A"



- POINT OF BEGINNING
- REFER TO FILED E.I.C. CAPSULE 1733



3119892
 Page: 3 of 3
 12/19/2006 03:02P
 Bk-M35 Pg-7071