

RESOLUTION 2006 - 32

**A RESOLUTION TO CREATE RURAL IMPROVEMENT
DISTRICT 2006-2 FOR THE GRASS-LAND MAJOR SUBDIVISION**

WHEREAS, the Grass-Land Major Subdivision is located in the NE ¼ of Section 8 and the NW ¼ of Section 9, T10N, R3W; and

WHEREAS, the preliminary plat approval granted by the Board of County Commissioners for the subdivision included at condition that a mechanism for road maintenance be established for the subdivision; and

WHEREAS, a petition has been received from the developer, Duane Noel, requesting that the Board of County Commissioners create a Rural Improvement District for the Grass-Land Major Subdivision, in accordance with the condition of subdivision approval; and

WHEREAS, the developer is the sole owner of the lands to be included in the District; and

WHEREAS, the Board of County Commissioners has the authority to order and create the improvement district based upon receipt of a petition containing the consent of all of the owners of property to be included in the district, pursuant to Section 7-12-2101(2), MCA.

NOW, THEREFORE, BE IT RESOLVED by the Lewis and Clark County Board of County Commissioners that it does hereby approve the requested creation of the Grass-Land Major Subdivision Rural Improvement District No. 2006-2 for the purpose of equitably funding road maintenance within said district.

BE IT FURTHER RESOLVED that the district will include all lots in all phases anticipated to be developed as the Grass-Land Major Subdivision, shown on Exhibit "A", attached hereto and made a part hereof.

BE IT FURTHER RESOLVED that the maintenance could include, but is not limited to, contribution to a reserve account for future chip-seal applications, crack sealing, snow plowing, sweeping, and other maintenance and repair as necessary to preserve the road surfaces, and that such maintenance shall be administered by the County. The County will serve only to coordinate the necessary work, collect the assessments, and disburse payments for the district; it is anticipated that the maintenance would be performed by a private contractor.

BE IT FURTHER RESOLVED that the annual costs for said maintenance are \$12,188.00. Each lot would be assessed a flat fee of \$190.44 per lot per year. All funds collected for the maintenance district shall be spent solely for the road maintenance activities on roads in the Grass-Land Major Subdivision.



Lewis & Clark County

COUNTY

3103505

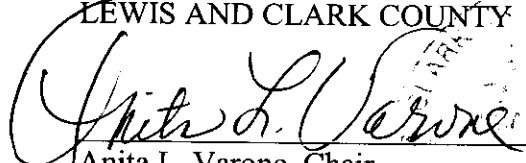
Page: 1 of 3
03/10/2006 03:22P

BK-M34 Pg-1600

BE IT FURTHER RESOLVED that the district shall remain in effect in perpetuity or until such action by the Board of County Commissioners otherwise dissolves the district.

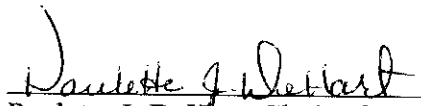
DATED this 9th day of March, 2006.

BOARD OF COUNTY COMMISSIONERS
LEWIS AND CLARK COUNTY


Anita L. Varone, Chair



ATTEST:


Paulette J. DeHart, Clerk of Board

Attachment: Exhibit "A"



Lewis & Clark County

COUNTY

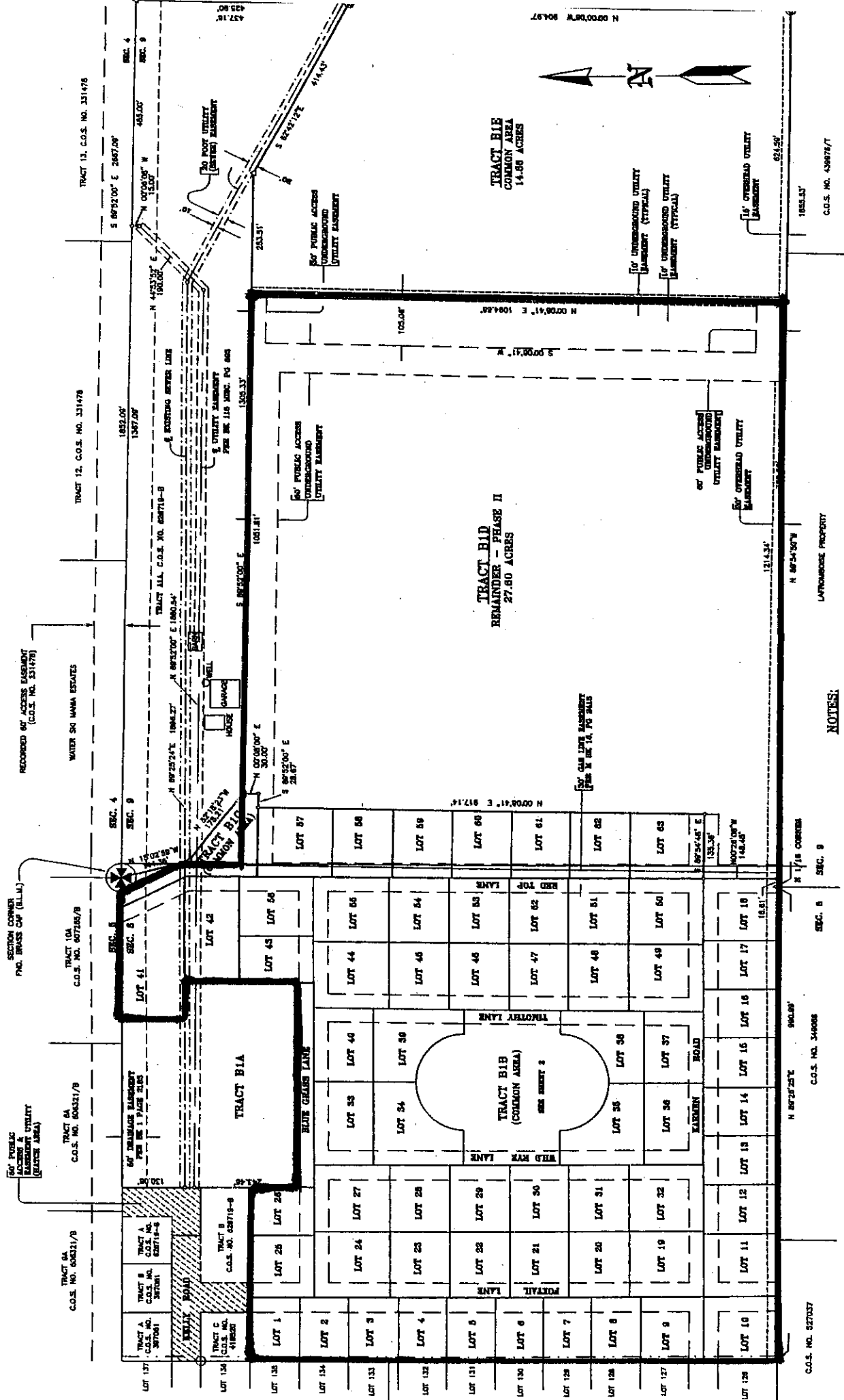
3103505

Page: 2 of 3
03/10/2006 03:22P

Bk-M34 Pg-1600

GRASS-LAND SUBDIVISION

EXHIBIT "A"



NOTES:

(1) THE DISTANCES SHOWN ARE THE TOTAL LENGTH OF THE LOT LINES, UNLESS OTHERWISE SHOWN NOT TO BE.

LEGEND

- SET 4" W/ P.C. (SEE-1288)
- △ P.D. 4" W/ P.C. (SEE-1288)
- P.D. 3" W/ P.C. (SEE-1288)
- P.D. 1" W/ P.C. (SEE-1288)
- CALCULATED POSITION, NOTHING FOUND OR SET



3103505
 Page: 3 of 3
 03/10/2006 03:22P
 Bk-M34 Pg-1600

PREPARED BY REES SURVEYING
 6660 GREEN MEADOW DR.
 HELENA, MT 59602

REBULARY 9, 2005
 1 BY: WDW/CJR
 2 BY: CJR
 04205

Lewis & Clark County

DOC. NO.