

**Helena Valley  
Wetlands Community Partnership**

printed February 01, 2001



City of Helena - Lewis & Clark County  
Geographic Information Services  
room 147 city-county bldg.  
316 North Park Avenue  
Helena, Montana 59601  
406-447-8367  
[www.co.lewis-clark.mt.us/map](http://www.co.lewis-clark.mt.us/map)

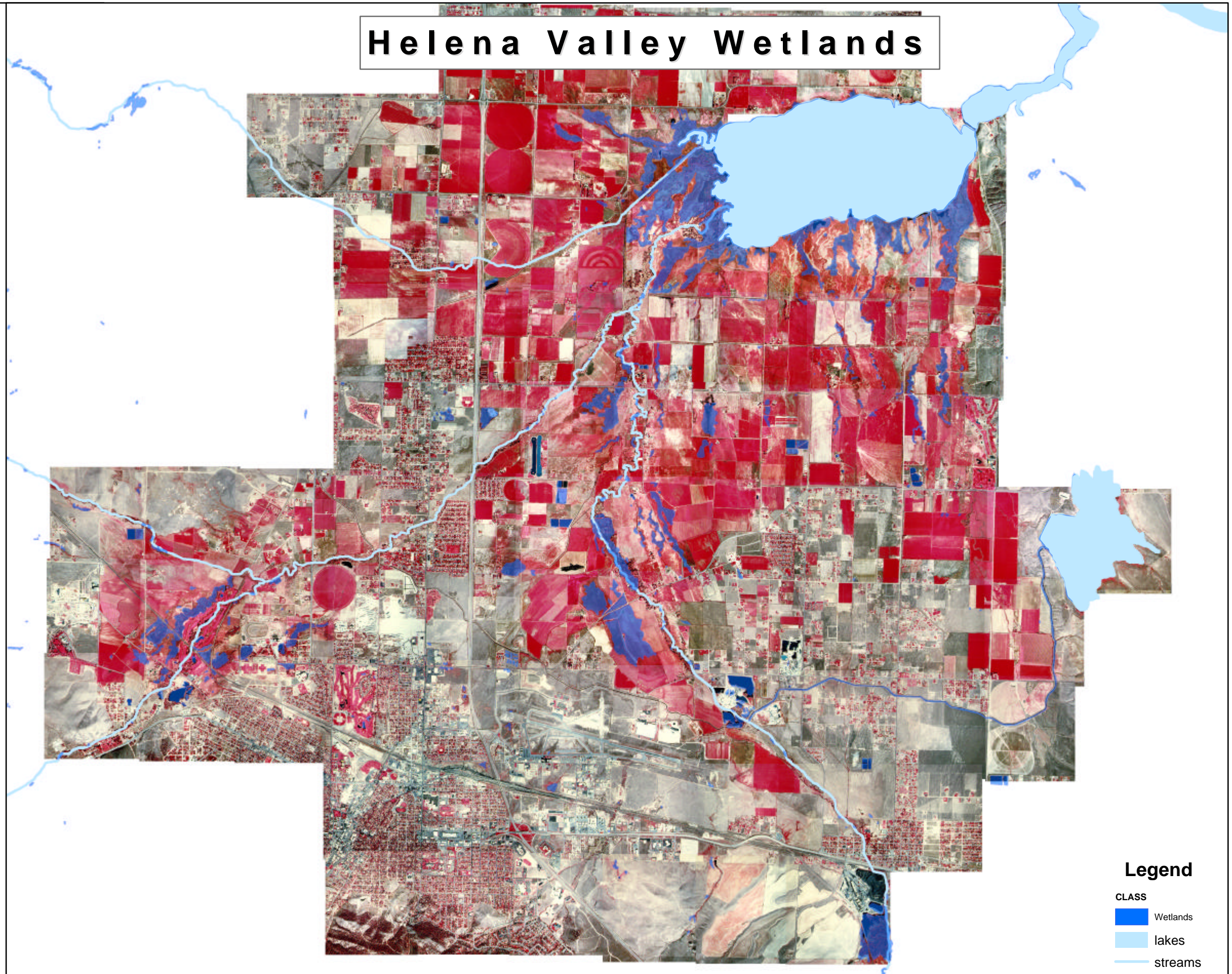
**DRAFT**

**NOTE:**


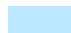

The National Wetlands Inventory mapping shown on this document was prepared primarily by stereoscopic analysis of high altitude aerial photographs. Wetlands were identified on the photographs based on vegetation, visible hydrology, and geography in accordance with **Classification of Wetlands and Deepwater Habitats of the United States (FWS/OBS - 79/31 Dec. 1979)**. The aerial photographs typically reflect conditions during the specific year and season when they were taken (7/84 and 9/87). In addition, there is a margin of error inherent in the use of the aerial photographs. Thus, a detailed on the ground and historical analysis of a single site may result in a revision of the wetland boundaries established through photographic interpretation. In addition, some small wetlands and those obscured by dense forest cover may not be included on this document.

Federal, State, and local regulatory agencies with jurisdiction over wetlands may define and describe wetlands in a different manner than that used in this inventory. There is no attempt, in either the design or products of this inventory, to define the limits of proprietary jurisdiction of any Federal, State or local government or to establish the geographical scope of the regulatory programs of government agencies. **Persons intending to engage in activities involving modifications within or adjacent to wetland areas should seek the advice of appropriate Federal, State or local agencies concerning specified agency regulatory programs and proprietary jurisdictions that may affect such activities.**

# Helena Valley Wetlands



**Legend**

- CLASS
-  Wetlands
  -  lakes
  -  streams

Aerial photographic base, upon which the NWI mapping is overlain, is color infrared imagery flown 9/16/98. NWI mapping was completed in 1999.

0 1 2 Miles