

---

Fall 2012

## Health Beat



East Helena Lead Education and Abatement Program

### **Comments Invited on Proposed East Helena Superfund Site Soils Regulations**

## **Public Invited to Comment on East Helena Superfund Soil Proposal**

The Lewis and Clark City-County Health Department is accepting public comments on proposed regulations that would govern the displacement and disposal of soil in the East Helena Superfund area.

The purpose of the regulations is to protect the public health and control pollution by protecting soil clean-up work that has been completed in and around the Superfund site.

Under the regulations, anyone planning to displace or dispose of more than one cubic yard (about half a pickup load) of soil within the site would need to get a permit. The permits would be available free of charge from the Lead Education and Abatement Program (LEAP) of the health department in East Helena City Hall.

People involved with displacing and disposing of potentially contaminated soils would need to be certified (at no cost to them) by LEAP. Contaminated soil would need to be disposed of at a site approved by the U.S. Environmental Protection Agency (EPA).

The regulations would apply to all land-use activities that disturb soil in the Superfund area. A public hearing on the proposed regulations will be held Oct. 25, from 6:30 to 8 p.m. in the library of the East Valley Middle School, 400 N. Kalispell. Oral and written comments will be accepted at the meeting.

Residents also may mail comments to Kathy Moore, Lewis and Clark City-County Health Department, 316 N. Park Ave., Helena MT 59623; or send them by e-mail to [kmoore@co.lewis-clark.mt.us](mailto:kmoore@co.lewis-clark.mt.us).

The public comment period will end Nov. 2 at 5 p.m.

A copy of the regulations, as well as a map showing the administrative boundaries of the Superfund area, is available online at [www.LewisandClarkHealth.org](http://www.LewisandClarkHealth.org) or by calling the Lead Education and Abatement Program at 457-8583.

---

## Frequently Asked Phone Numbers and Websites:

- East Helena Lead Program:  
406-457-8583
- East Helena City Hall:  
406-227-5321
- Cooperative Health Clinic: 406-443-2584
- Consumer Product Safety Commission:  
800-638-2772
- Centers for Disease Control:  
<http://www.cdc.gov/nceh/lead/>
- EPA: 406-457-5013  
<http://www.epa.gov/lead/>
- National Lead Info. Center:  
<http://www.epa.gov/lead/pubs/nlic.htm>
- Lewis and Clark County Health Department:  
[www.LewisandClarkHealth.org](http://www.LewisandClarkHealth.org)
- Lewis and Clark County:  
[www.co.lewis-clark.mt.us](http://www.co.lewis-clark.mt.us)

## East Helena Institutional Controls Plan:

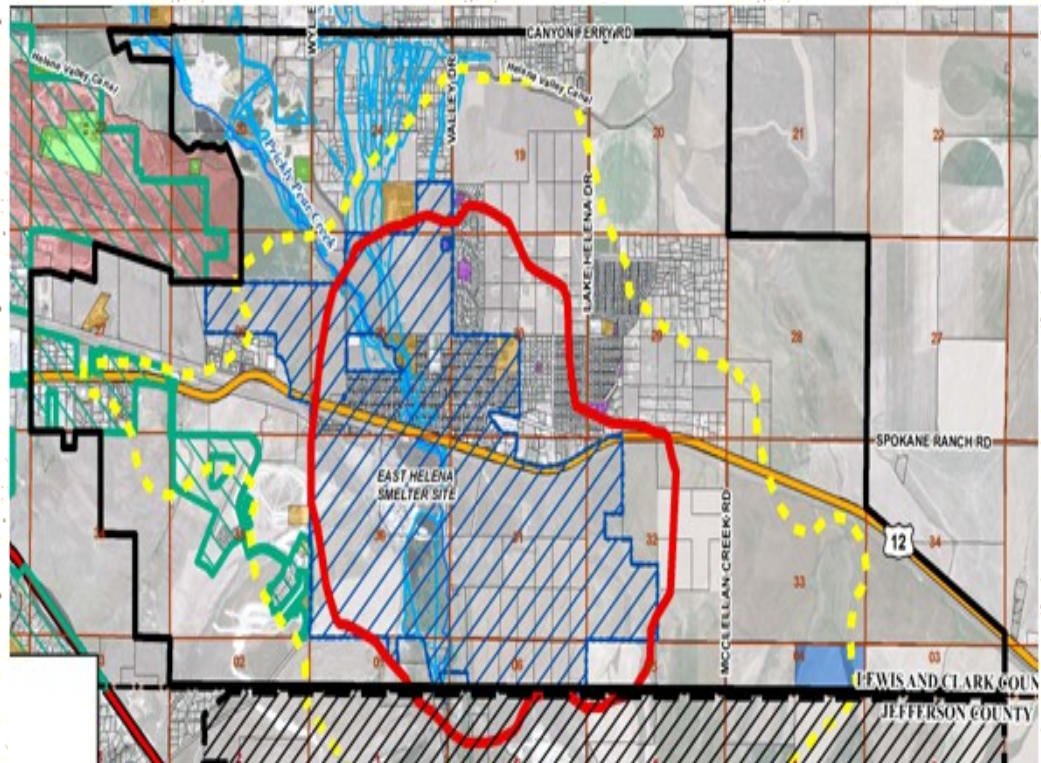
One component of the East Helena Institutional Controls Plan is a soil regulation that governs the displacement and disposal of soil within the East Helena Superfund site (see map)

## Other components of Institutional Controls can be:

- \* 811 one call program (call before you dig)
- \* Subdivision regulations.
- \* Blood lead screening
- \* Informational brochures
- \* Fences and signage. .

**For more information call the LEAP office at 457-8583 or visit our website: [www.LewisandClarkHealth.org](http://www.LewisandClarkHealth.org)**

## Lewis and Clark County Institutional Controls Administrative Boundary Map



Lead Program  
P.O. Box 1231  
East Helena, MT  
59635

Postal Customer 59635

Presort Standard  
U.S. Postage  
**PAID**  
EPA Permit No. G35  
Helena, MT