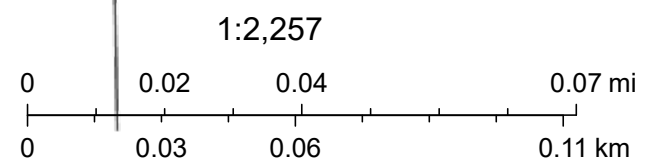




1/9/2024, 11:58:50 AM

- |                              |                |                         |                        |
|------------------------------|----------------|-------------------------|------------------------|
| World Imagery                | Roadways       | ----- Non-Motorized     | Secondary Hwy          |
| Low Resolution 15m Imagery   | Interstate     | ----- Abandoned         | Helena City Limits     |
| High Resolution 60cm Imagery | Divided 4-Lane | ----- Water Access Only | County Boundary        |
| High Resolution 30cm Imagery | Paved          | ----- Alley             | East Helena City Limit |
| Citations                    | Unpaved        | Highways                | Lakes                  |
| 60cm Resolution Metadata     | ..... Driveway | ----- Interstate Hwy    | Streams                |
| → Railroads                  | ← Oneway       | ----- US Hwy            |                        |
|                              | → Oneway       | ----- Montana Hwy       |                        |



Sources: Esri, Airbus DS, USGS, NGA, NASA, CGIAR, N Robinson, NCEAS, NLS, OS, NMA, Geodatastyrelsen, Rijkswaterstaat, GSA, Geoland, FEMA, Intermap and the GIS user community, Source: Esri, Maxar, Earthstar Geographics, and the GIS User Community, Lewis and Clark County, Montana

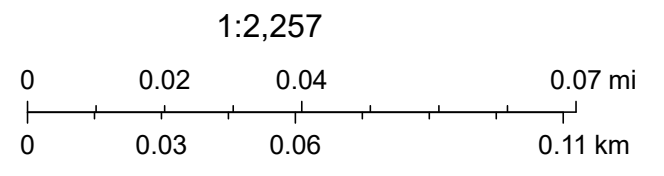


# Canyon Ridge Irrigated .61 Acres



1/9/2024, 12:07:58 PM

- |                              |                |                         |                        |
|------------------------------|----------------|-------------------------|------------------------|
| World Imagery                | Roadways       | ----- Non-Motorized     | Secondary Hwy          |
| Low Resolution 15m Imagery   | Interstate     | ----- Abandoned         | Helena City Limits     |
| High Resolution 60cm Imagery | Divided 4-Lane | ----- Water Access Only | County Boundary        |
| High Resolution 30cm Imagery | Paved          | ----- Alley             | East Helena City Limit |
| Citations                    | Unpaved        | Highways                | Lakes                  |
| 60cm Resolution Metadata     | ..... Driveway | ----- Interstate Hwy    | Streams                |
| → Railroads                  | ← Oneway       | ----- US Hwy            |                        |
|                              | → Oneway       | ----- Montana Hwy       |                        |



Sources: Esri, Airbus DS, USGS, NGA, NASA, CGIAR, N Robinson, NCEAS, NLS, OS, NMA, Geodatastyrelsen, Rijkswaterstaat, GSA, Geoland, FEMA, Intermap and the GIS user community, Source: Esri, Maxar, Earthstar Geographics, and the GIS User Community, Lewis and Clark County, Montana State Library, © OpenStreetMap, Microsoft, Esri, TomTom, Garmin, SafeGraph, GeoTechnologies, Inc, METI/NASA, USGS, Bureau of Land Management



# 46 Degrees N Trail .327 Acres

I.B.I.



1/9/2024, 12:02:47 PM

World Imagery	Roadways	----- Non-Motorized	Secondary Hwy	1:4,514
Low Resolution 15m Imagery	Interstate	----- Abandoned	Helena City Limits	0 0.04 0.07 0.14 mi
High Resolution 60cm Imagery	Divided 4-Lane	----- Water Access Only	County Boundary	0 0.05 0.1 0.2 km
High Resolution 30cm Imagery	Paved	----- Alley	East Helena City Limit	
Citations	Unpaved	Highways	Lakes	
1.2m Resolution Metadata	..... Driveway	----- Interstate Hwy	Streams	
→ Railroads	← Oneway	----- US Hwy		Sources: Esri, Airbus DS, USGS, NGA, NASA, CGIAR, N Robinson, NCEAS, NLS, OS, NMA, Geodastystyrelsen, Rijkswaterstaat, GSA, Geoland, FEMA, Intermap and the GIS user community, Source: Esri, Maxar, Earthstar Geographics, and the GIS User Community, Lewis and
	→ Oneway	----- Montana Hwy		Web AppBuilder for ArcGIS

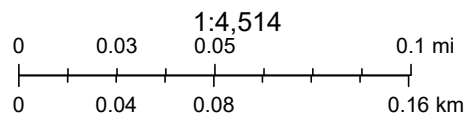


# Canyon Ferry Crossing Fire Tank & Hydrant 0.17 acres

1.B.2.



1/31/2024, 1:31:48 PM



- |                              |                     |                  |                           |
|------------------------------|---------------------|------------------|---------------------------|
| World Imagery                | — Paved             | Highways         | ● Private Non-Profit      |
| Low Resolution 15m Imagery   | — Unpaved           | — Interstate Hwy | ● Residential Mult-Family |
| High Resolution 60cm Imagery | ..... Driveway      | — US Hwy         | ● School                  |
| High Resolution 30cm Imagery | — Oneway            | — Montana Hwy    | □ Parcel Boundaries       |
| Citations                    | — Oneway            | — Secondary Hwy  | □ Helena City Limits      |
| 1.2m Resolution Metadata     | — Non-Motorized     | Addresses        | □ County Boundary         |
| — Railroads                  | — Abandoned         | ● Residential    | □ East Helena City Limit  |
| Roadways                     | — Water Access Only | ● Commercial     | □ Lakes                   |
| — Interstate                 | — Alley             | ● Public         | — Streams                 |
| — Divided 4-Lane             |                     | ● Miscellaneous  |                           |

Sources: Esri, Airbus DS, USGS, NGA, NASA, CGIAR, N Robinson, NCEAS, NLS, OS, NMA, Geodatastyrelsen, Rijkswaterstaat, GSA, Geoland, FEMA, Intermap and the GIS user community, Source: Esri, Maxar, Earthstar Geographics, and the GIS User Community, Lewis and Clark County/City of Helena GIS Services, The data contained on this map are NOT the official

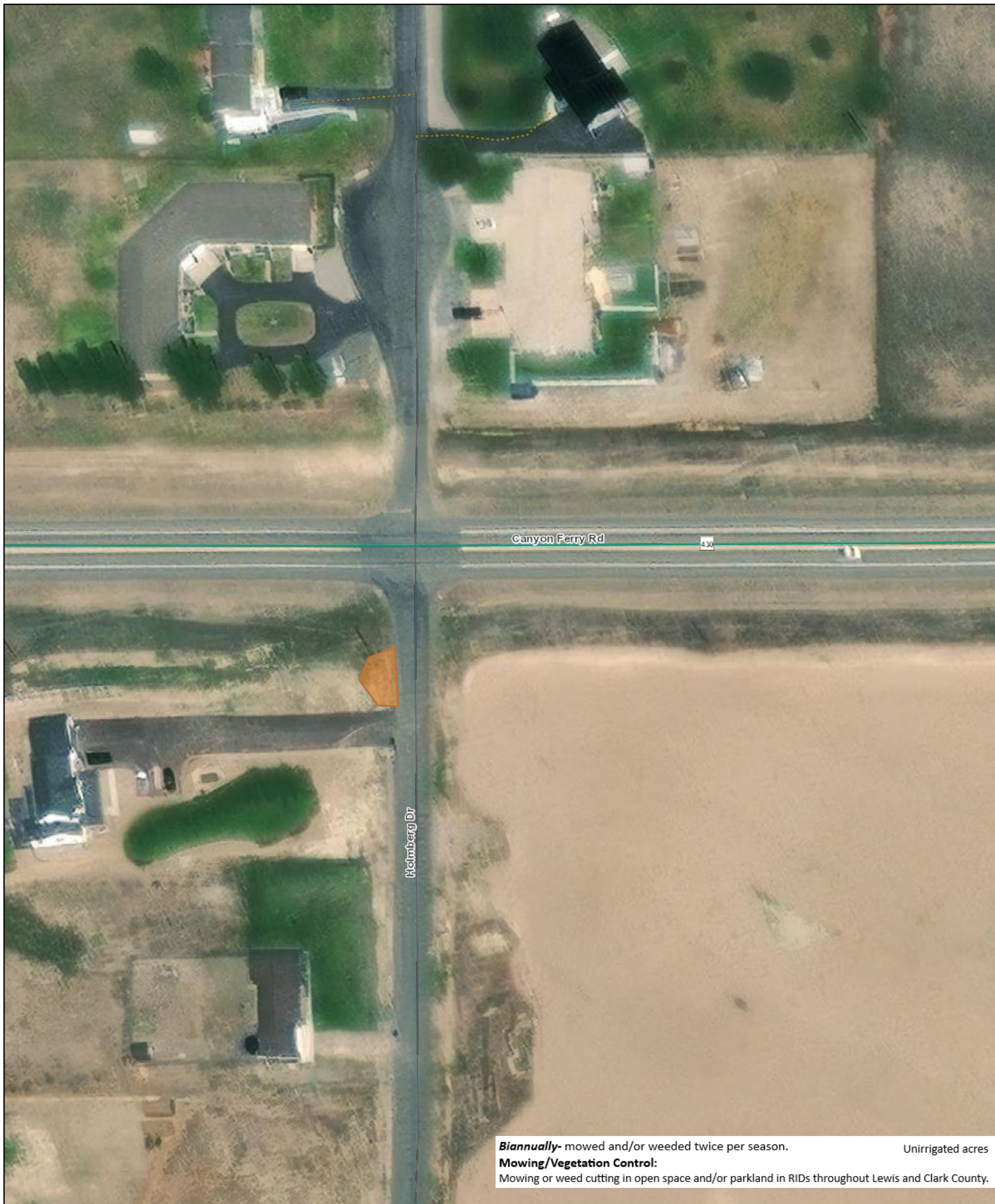
Web AppBuilder for ArcGIS

Esri Community Maps Contributors, County of Lewis and Clark, Montana State Library, © OpenStreetMap, Microsoft, Esri, TomTom, Garmin, SafeGraph, GeoTechnologies, Inc, METI/NASA, USGS,



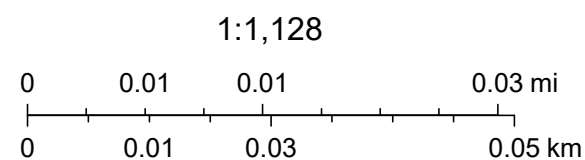
# Canyon Ridge Hydrant Area .114 Acres

1.B.3.



1/9/2024, 12:09:44 PM

- |                              |                 |                     |                        |
|------------------------------|-----------------|---------------------|------------------------|
| World Imagery                | <b>Roadways</b> | ----- Non-Motorized | Secondary Hwy          |
| Low Resolution 15m Imagery   | Interstate      | ----- Abandoned     | Helena City Limits     |
| High Resolution 60cm Imagery | Divided 4-Lane  | Water Access Only   | County Boundary        |
| High Resolution 30cm Imagery | Paved           | Alley               | East Helena City Limit |
| Citations                    | Unpaved         | <b>Highways</b>     | Lakes                  |
| 30cm Resolution Metadata     | Driveway        | Interstate Hwy      | Streams                |
| → Railroads                  | Oneway          | US Hwy              |                        |
|                              | Oneway          | Montana Hwy         |                        |



Sources: Esri, Airbus DS, USGS, NGA, NASA, CGIAR, N Robinson, NCEAS, NLS, OS, NMA, Geodatastyrelsen, Rijkswaterstaat, GSA, Geoland, FEMA, Intermap and the GIS user community, Source: Esri, Maxar, Earthstar Geographics, and the GIS User Community, Lewis and Clark County



# Frontier Village Trail .26 Acres

1.B.4.



1/9/2024, 12:20:48 PM

World Imagery	Roadways	----- Non-Motorized	Secondary Hwy	1:4,514
Low Resolution 15m Imagery	Interstate	----- Abandoned	Helena City Limits	0 0.04 0.07 0.14 mi
High Resolution 60cm Imagery	Divided 4-Lane	----- Water Access Only	County Boundary	0 0.05 0.1 0.2 km
High Resolution 30cm Imagery	Paved	----- Alley	East Helena City Limit	
Citations	Unpaved	Highways	Lakes	Sources: Esri, Airbus DS, USGS, NGA, NASA, CGIAR, N
1.2m Resolution Metadata	..... Driveway	Interstate Hwy	Streams	Robinson, NCEAS, NLS, OS, NMA, Geodastystyrelsen,
→ Railroads	← Oneway	US Hwy		Rijkswaterstaat, GSA, Geoland, FEMA, Intermap and the
	→ Oneway	Montana Hwy		GIS user community, Source: Esri, Maxar, Earthstar



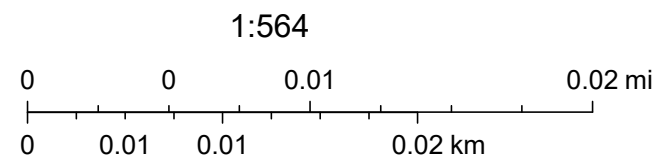
# Frontier Village Hydrant Area .06

1.B.5.



1/9/2024, 12:19:09 PM

- |                              |                |                         |                        |
|------------------------------|----------------|-------------------------|------------------------|
| World Imagery                | Roadways       | ----- Non-Motorized     | Secondary Hwy          |
| Low Resolution 15m Imagery   | Interstate     | ----- Abandoned         | Helena City Limits     |
| High Resolution 60cm Imagery | Divided 4-Lane | ----- Water Access Only | County Boundary        |
| High Resolution 30cm Imagery | Paved          | ----- Alley             | East Helena City Limit |
| Citations                    | Unpaved        | Highways                | Lakes                  |
| 15cm Resolution Metadata     | ..... Driveway | ----- Interstate Hwy    | Streams                |
| → Railroads                  | ← Oneway       | ----- US Hwy            |                        |
|                              | → Oneway       | ----- Montana Hwy       |                        |



Sources: Esri, Airbus DS, USGS, NGA, NASA, CGIAR, N Robinson, NCEAS, NLS, OS, NMA, Geodastystyrelsen, Rijkswaterstaat, GSA, Geoland, FEMA, Intermap and the GIS user community, Source: Esri, Maxar, Earthstar Geographics, and the GIS User Community, Lewis and Clark County

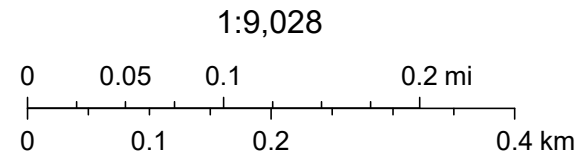


# Heron Creek Trails 4.65 Acres



1/9/2024, 1:31:57 PM

- |                              |                |                         |                        |
|------------------------------|----------------|-------------------------|------------------------|
| World Imagery                | Roadways       | ----- Non-Motorized     | Secondary Hwy          |
| Low Resolution 15m Imagery   | Interstate     | ----- Abandoned         | Parcel Boundaries      |
| High Resolution 60cm Imagery | Divided 4-Lane | ----- Water Access Only | Helena City Limits     |
| High Resolution 30cm Imagery | Paved          | ----- Alley             | County Boundary        |
| Citations                    | Unpaved        | Highways                | East Helena City Limit |
| 2.4m Resolution Metadata     | Driveway       | Interstate Hwy          | Lakes                  |
| Railroads                    | Oneway         | US Hwy                  | Streams                |
|                              | Oneway         | Montana Hwy             |                        |



Esri, NASA, NGA, USGS, FEMA, Source: Esri, Maxar, Earthstar Geographics, and the GIS User Community, Lewis and Clark County/City of Helena GIS Services, Esri Community Maps Contributors, County of Lewis and Clark, Montana State Library, © OpenStreetMap, Microsoft, Esri,

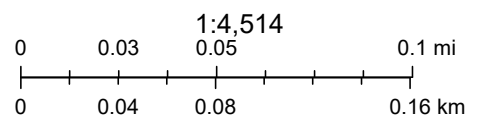


# Kamp Fire Hydrant Area 0.06 acres

1.B.7.



1/31/2024, 1:28:08 PM



- |                              |                     |                  |                            |
|------------------------------|---------------------|------------------|----------------------------|
| World Imagery                | — Paved             | Highways         | ● Private Non-Profit       |
| Low Resolution 15m Imagery   | — Unpaved           | — Interstate Hwy | ● Residential Multi-Family |
| High Resolution 60cm Imagery | ..... Driveway      | — US Hwy         | ● School                   |
| High Resolution 30cm Imagery | — Oneway            | — Montana Hwy    | □ Parcel Boundaries        |
| Citations                    | — Oneway            | — Secondary Hwy  | □ Helena City Limits       |
| 1.2m Resolution Metadata     | — Non-Motorized     | Addresses        | □ County Boundary          |
| — Railroads                  | — Abandoned         | ● Residential    | □ East Helena City Limit   |
| Roadways                     | — Water Access Only | ● Commercial     | □ Lakes                    |
| — Interstate                 | — Alley             | ● Public         | □ Streams                  |
| — Divided 4-Lane             |                     | ● Miscellaneous  |                            |

Sources: Esri, Airbus DS, USGS, NGA, NASA, CGIAR, N Robinson, NCEAS, NLS, OS, NMA, Geodatastyrelsen, Rijkswaterstaat, GSA, Geoland, FEMA, Intermap and the GIS user community, Source: Esri, Maxar, Earthstar Geographics, and the GIS User Community, Lewis and Clark County/City of Helena GIS Services, The data contained on this map are NOT the official

Web AppBuilder for ArcGIS

Esri Community Maps Contributors, County of Lewis and Clark, Montana State Library, © OpenStreetMap, Microsoft, Esri, TomTom, Garmin, SafeGraph, GeoTechnologies, Inc, METI/NASA, USGS,

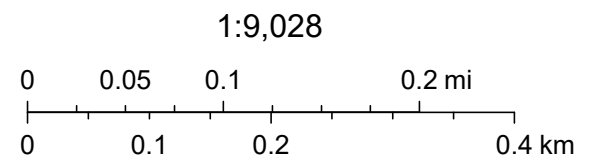


# Red Fox Meadows Trail 1.404 Acres



1/9/2024, 12:57:56 PM

- |                              |                  |                     |                     |
|------------------------------|------------------|---------------------|---------------------|
| World Imagery                | → Railroads      | ← Oneway            | Highways            |
| Low Resolution 15m Imagery   | Roadways         | → Oneway            | — Interstate Hwy    |
| High Resolution 60cm Imagery | — Interstate     | --- Non-Motorized   | — US Hwy            |
| High Resolution 30cm Imagery | — Divided 4-Lane | — Abandoned         | — Montana Hwy       |
| Citations                    | — Paved          | — Water Access Only | — Secondary Hwy     |
| 2.4m Resolution Metadata     | — Unpaved        | — Alley             | □ Parcel Boundaries |
|                              | ... Driveway     |                     |                     |

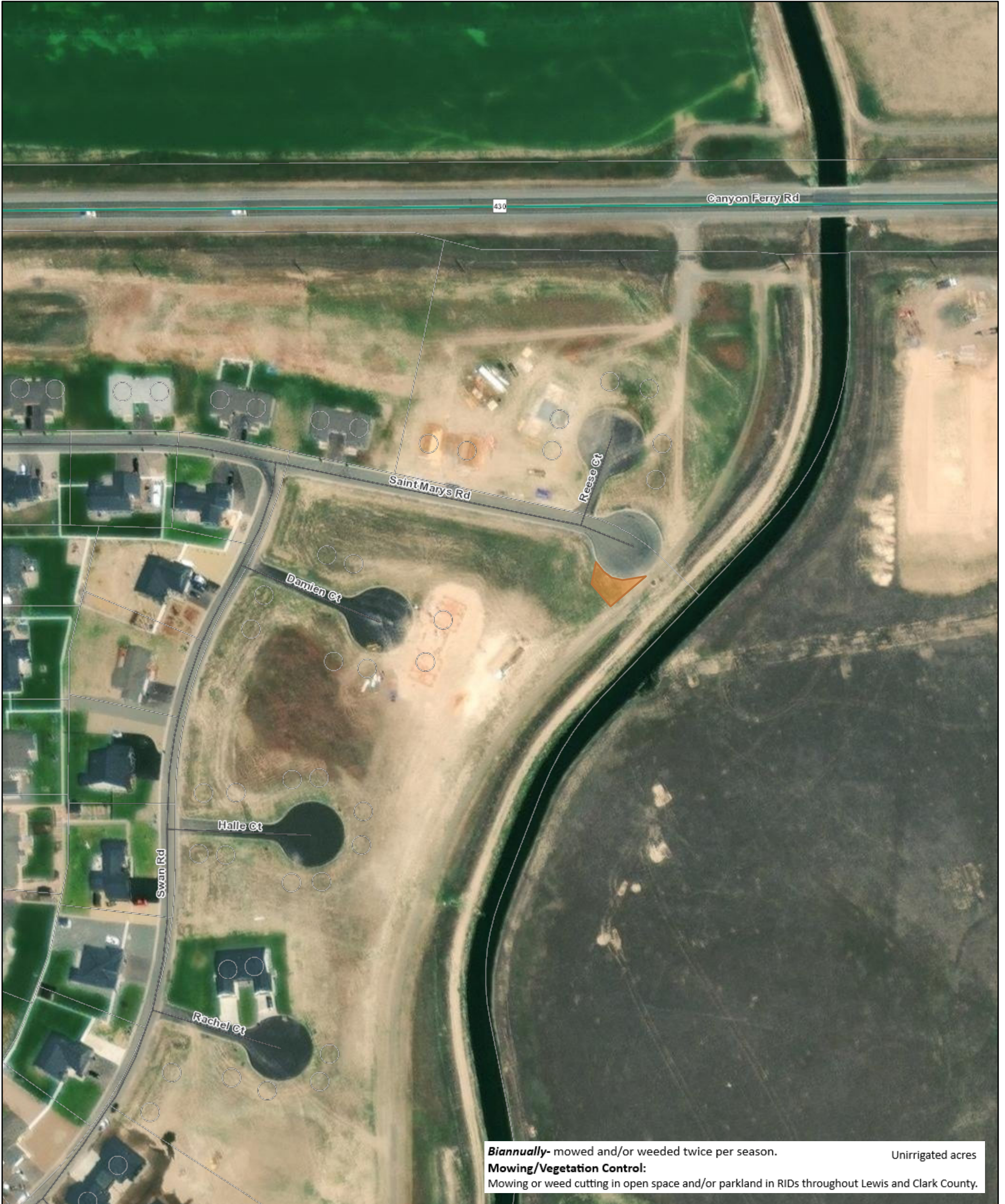


Esri, NASA, NGA, USGS, FEMA, Source: Esri, Maxar, Earthstar Geographics, and the GIS User Community, Lewis and Clark County/City of Helena GIS Services, Esri Community Maps Contributors, County of Lewis and Clark, Montana State Library, © OpenStreetMap, Microsoft, Esri,



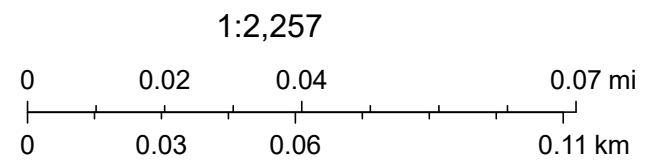
# Red Fox Meadows Hydrant Area .0574 Acres

1.B.9.



1/9/2024, 1:03:56 PM

World Imagery	Roadways	----- Non-Motorized	Secondary Hwy
Low Resolution 15m Imagery	Interstate	----- Abandoned	Parcel Boundaries
High Resolution 60cm Imagery	Divided 4-Lane	----- Water Access Only	Helena City Limits
High Resolution 30cm Imagery	Paved	----- Alley	County Boundary
Citations	Unpaved	Highways	East Helena City Limit
60cm Resolution Metadata	..... Driveway	Interstate Hwy	Lakes
→ Railroads	← Oneway	US Hwy	Streams
	→ Oneway	Montana Hwy	



Sources: Esri, Airbus DS, USGS, NGA, NASA, CGIAR, N Robinson, NCEAS, NLS, OS, NMA, Geodatastyrelsen, Rijkswaterstaat, GSA, Geoland, FEMA, Intermap and the GIS user community, Source: Esri, Maxar, Earthstar Geographics, and the GIS User Community, Lewis and Clark County



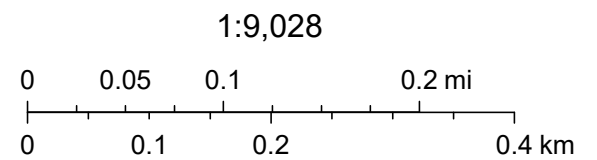
# Red Fox Meadows Stormwater 16.771 Acres

1.B.10.



1/9/2024, 1:02:12 PM

- |                              |                |                         |                        |
|------------------------------|----------------|-------------------------|------------------------|
| World Imagery                | Roadways       | ----- Non-Motorized     | Secondary Hwy          |
| Low Resolution 15m Imagery   | Interstate     | ----- Abandoned         | Parcel Boundaries      |
| High Resolution 60cm Imagery | Divided 4-Lane | ----- Water Access Only | Helena City Limits     |
| High Resolution 30cm Imagery | Paved          | ----- Alley             | County Boundary        |
| Citations                    | Unpaved        | Highways                | East Helena City Limit |
| 2.4m Resolution Metadata     | ..... Driveway | ----- Interstate Hwy    | Lakes                  |
| → Railroads                  | ← Oneway       | ----- US Hwy            | Streams                |
|                              | → Oneway       | ----- Montana Hwy       |                        |



Esri, NASA, NGA, USGS, FEMA, Source: Esri, Maxar, Earthstar Geographics, and the GIS User Community, Lewis and Clark County/City of Helena GIS Services, Esri Community Maps Contributors, County of Lewis and Clark, Montana State Library, © OpenStreetMap, Microsoft, Esri,

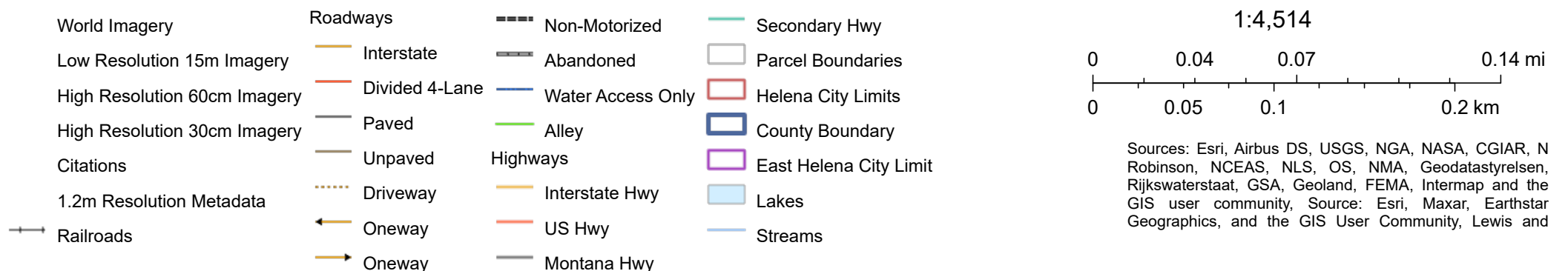


# Saddle Rock Hydrant Area .3 Acres

1.B.11.



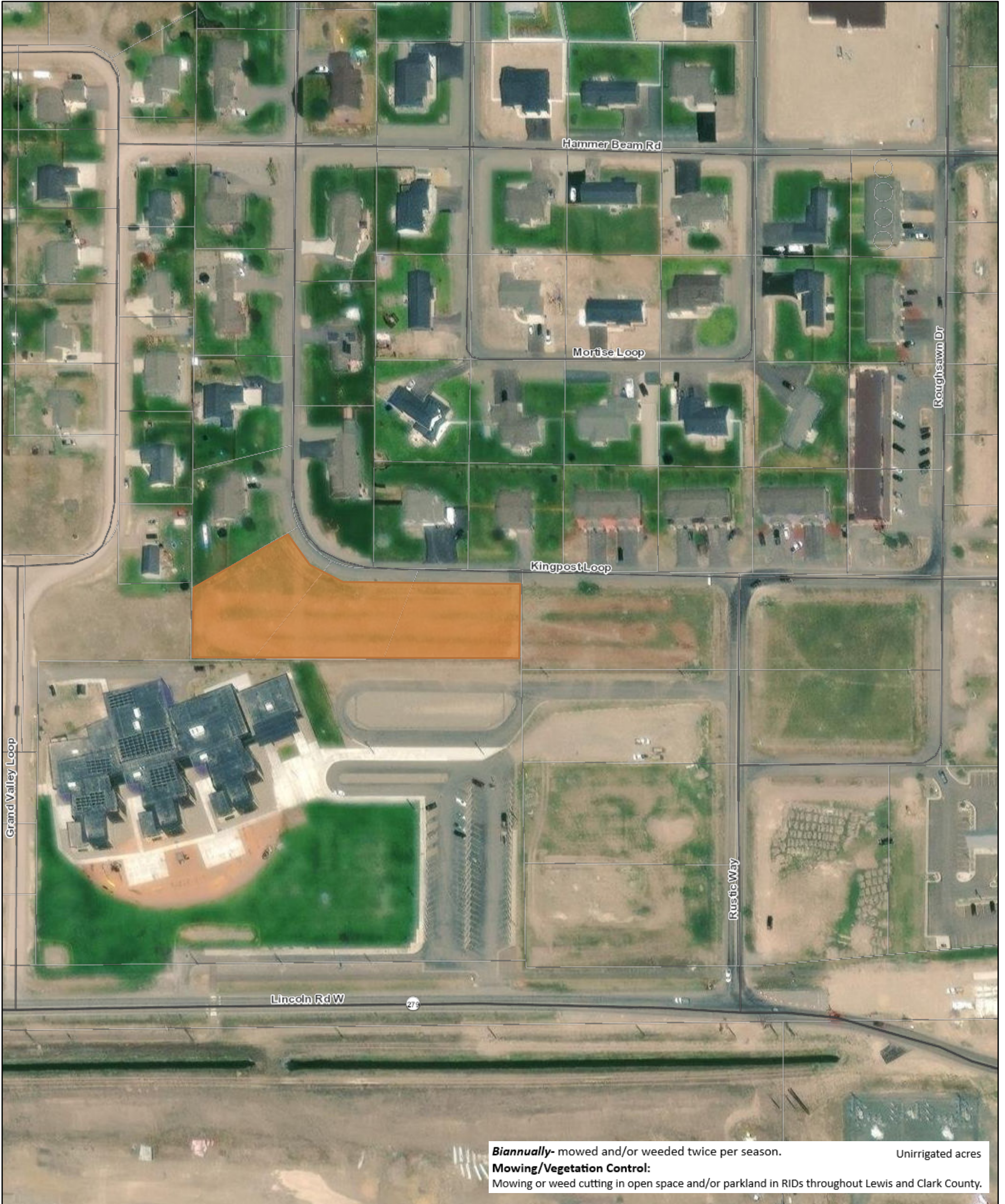
1/9/2024, 1:10:08 PM





# Timber Work Open Space 1.45 Acres

1.B.12.



1/9/2024, 1:25:03 PM

World Imagery	Roadways	----- Non-Motorized	Secondary Hwy	1:2,257
Low Resolution 15m Imagery	Interstate	----- Abandoned	Parcel Boundaries	
High Resolution 60cm Imagery	Divided 4-Lane	----- Water Access Only	Helena City Limits	0 0.02 0.04 0.07 mi
High Resolution 30cm Imagery	Paved	----- Alley	County Boundary	0 0.03 0.06 0.11 km
Citations	Unpaved	Highways	East Helena City Limit	Sources: Esri, Airbus DS, USGS, NGA, NASA, CGIAR, N Robinson, NCEAS, NLS, OS, NMA, Geodatastyrelsen, Rijkswaterstaat, GSA, Geoland, FEMA, Intermap and the GIS user community, Source: Esri, Maxar, Earthstar Geographics, and the GIS User Community, Lewis and
60cm Resolution Metadata	Driveway	Interstate Hwy	Lakes	
Railroads	Oneway	US Hwy	Streams	
	Oneway	Montana Hwy		



# Canyon Ridge Dry Land Area 4.5 Acres

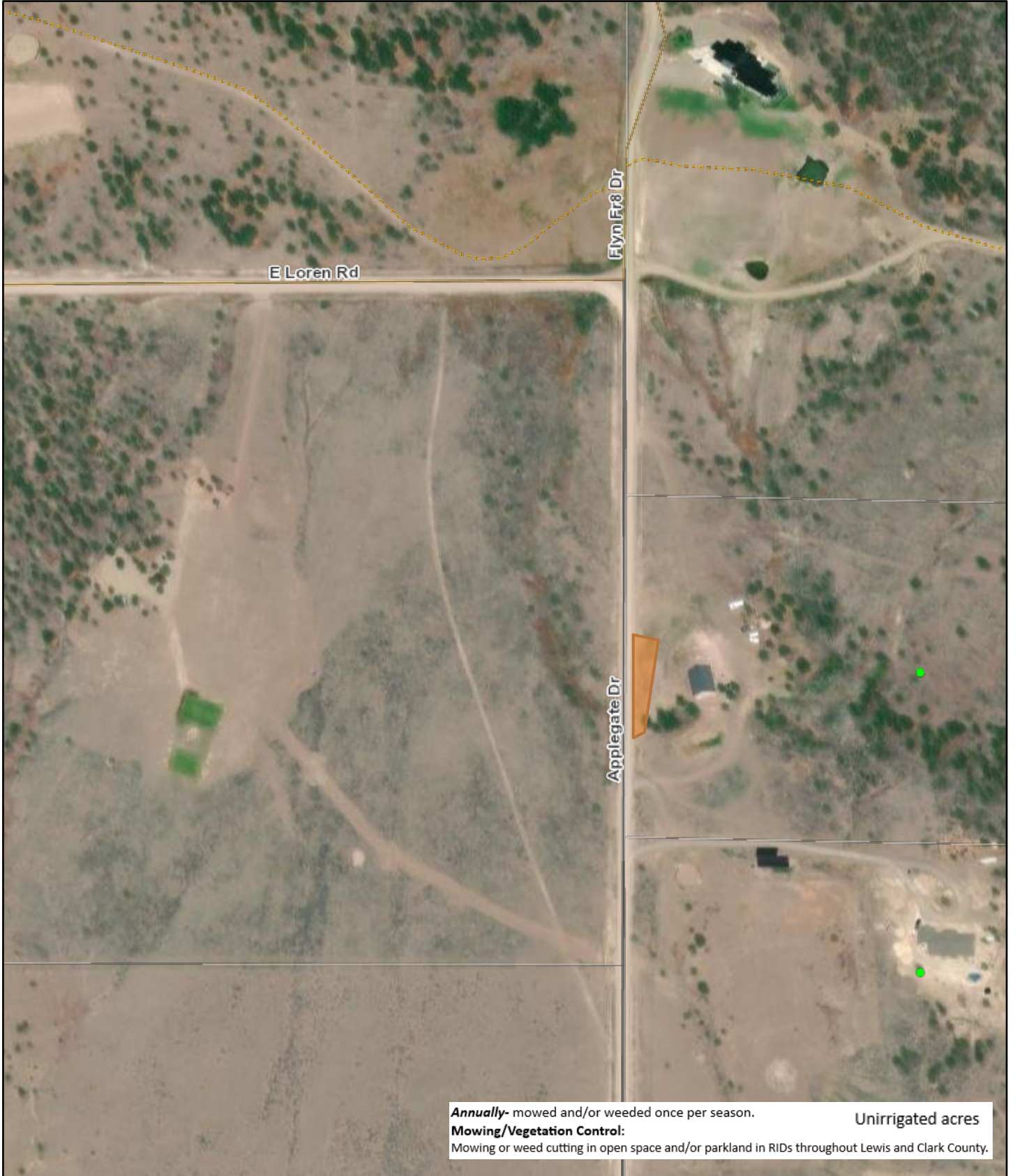


1/9/2024, 12:14:15 PM

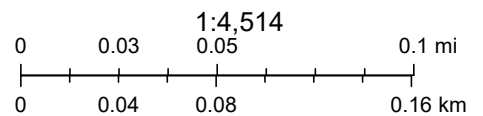
World Imagery	Roadways	----- Non-Motorized	Secondary Hwy	1:4,514
Low Resolution 15m Imagery	Interstate	----- Abandoned	Helena City Limits	
High Resolution 60cm Imagery	Divided 4-Lane	----- Water Access Only	County Boundary	0 0.04 0.07 0.14 mi
High Resolution 30cm Imagery	Paved	----- Alley	East Helena City Limit	0 0.05 0.1 0.2 km
Citations	Unpaved	<b>Highways</b>	Lakes	Sources: Esri, Airbus DS, USGS, NGA, NASA, CGIAR, N Robinson, NCEAS, NLS, OS, NMA, Geodatastyrelsen, Rijkswaterstaat, GSA, Geoland, FEMA, Intermap and the GIS user community, Source: Esri, Maxar, Earthstar Geographics, and the GIS User Community, Lewis and
1.2m Resolution Metadata	Driveway	Interstate Hwy	Streams	
→ Railroads	Oneway	US Hwy		
	Oneway	Montana Hwy		



# Country Winds Fire Tank & Hydrant 0.06 acres 1.C.2.



1/31/2024, 1:24:15 PM



- |                              |                     |                  |                           |
|------------------------------|---------------------|------------------|---------------------------|
| World Imagery                | — Paved             | Highways         | ● Private Non-Profit      |
| Low Resolution 15m Imagery   | — Unpaved           | — Interstate Hwy | ● Residential Mult-Family |
| High Resolution 60cm Imagery | ..... Driveway      | — US Hwy         | ● School                  |
| High Resolution 30cm Imagery | ← Oneway            | — Montana Hwy    | □ Parcel Boundaries       |
| Citations                    | → Oneway            | — Secondary Hwy  | □ Helena City Limits      |
| 1.2m Resolution Metadata     | --- Non-Motorized   | Addresses        | □ County Boundary         |
| → Railroads                  | — Abandoned         | ● Residential    | □ East Helena City Limit  |
| Roadways                     | — Water Access Only | ● Commercial     | □ Lakes                   |
| — Interstate                 | — Alley             | ● Public         | — Streams                 |
| — Divided 4-Lane             |                     | ● Miscellaneous  |                           |

Sources: Esri, Airbus DS, USGS, NGA, NASA, CGIAR, N Robinson, NCEAS, NLS, OS, NMA, Geodatastyrelsen, Rijkswaterstaat, GSA, Geoland, FEMA, Intermap and the GIS user community, Source: Esri, Maxar, Earthstar Geographics, and the GIS User Community, Lewis and Clark County/City of Helena GIS Services, The data contained on this map are NOT the official

Web AppBuilder for ArcGIS

Esri Community Maps Contributors, County of Lewis and Clark, Montana State Library, © OpenStreetMap, Microsoft, Esri, TomTom, Garmin, SafeGraph, GeoTechnologies, Inc, METI/NASA, USGS,



# Golden Meadows Hydrant Area .0574 Acres

1.C.3.



1/9/2024, 12:24:22 PM

World Imagery	Roadways	----- Non-Motorized	Secondary Hwy	1:2,257	
Low Resolution 15m Imagery	Interstate	----- Abandoned	Helena City Limits	0 0.02 0.04 0.07 mi	
High Resolution 60cm Imagery	Divided 4-Lane	----- Water Access Only	County Boundary	0 0.03 0.06 0.11 km	
High Resolution 30cm Imagery	Paved	----- Alley	East Helena City Limit	Sources: Esri, Airbus DS, USGS, NGA, NASA, CGIAR, N Robinson, NCEAS, NLS, OS, NMA, Geodatastyrelsen, Rijkswaterstaat, GSA, Geoland, FEMA, Intermap and the GIS user community, Source: Esri, Maxar, Earthstar Geographics, and the GIS User Community, Lewis and	
Citations	Unpaved	Highways	Lakes		
60cm Resolution Metadata	..... Driveway	----- Interstate Hwy	Streams		
→ Railroads	← Oneway	----- US Hwy			
	→ Oneway	----- Montana Hwy			



# Grand Vista Hydrant Area 1.6 Acres

1.C.4.



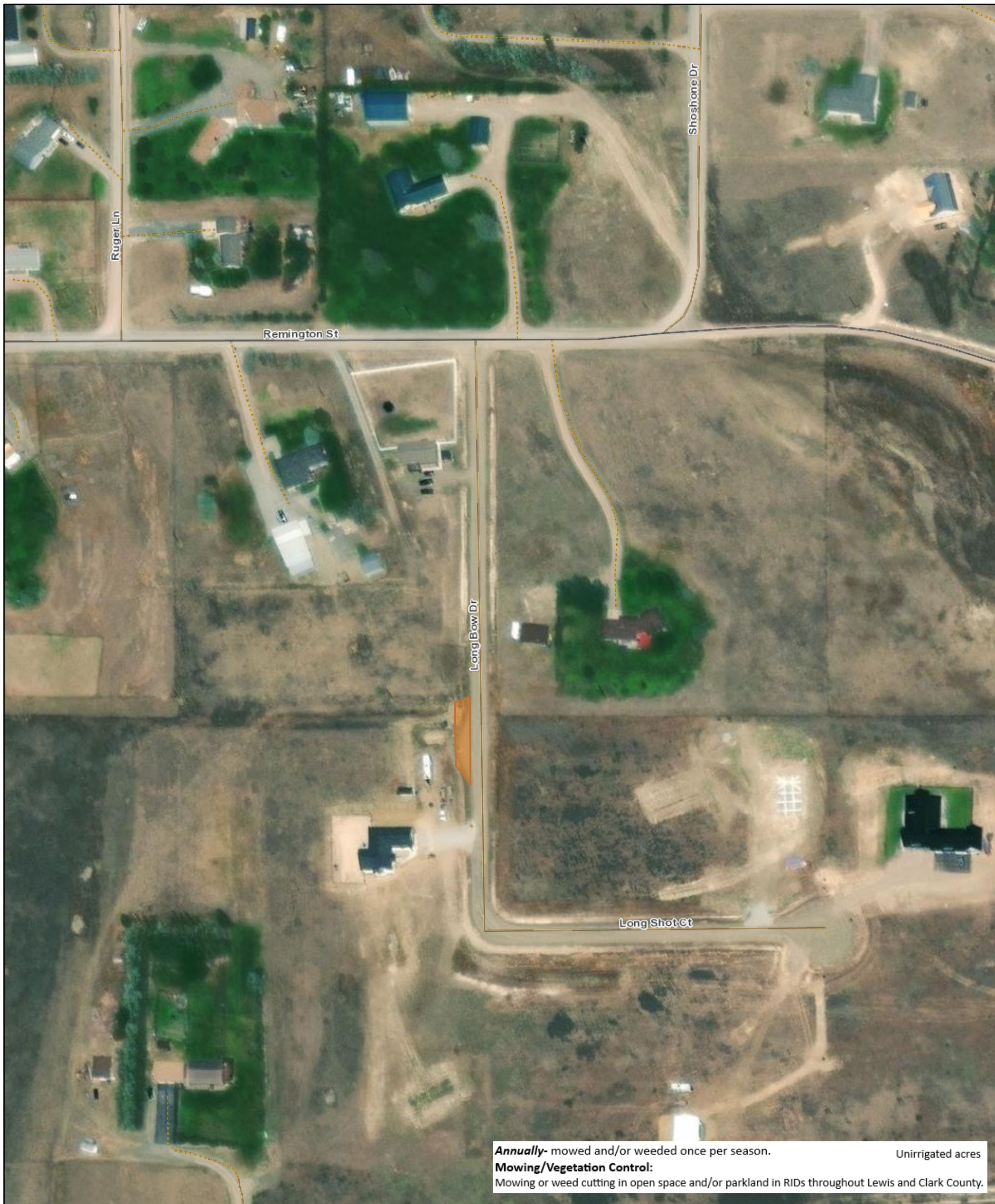
1/9/2024, 12:27:31 PM

World Imagery	Roadways	----- Non-Motorized	Secondary Hwy	1:4,514	
Low Resolution 15m Imagery	Interstate	----- Abandoned	Helena City Limits	0 0.04 0.07 0.14 mi	
High Resolution 60cm Imagery	Divided 4-Lane	----- Water Access Only	County Boundary	0 0.05 0.1 0.2 km	
High Resolution 30cm Imagery	Paved	----- Alley	East Helena City Limit	Sources: Esri, Airbus DS, USGS, NGA, NASA, CGIAR, N Robinson, NCEAS, NLS, OS, NMA, Geodastystyrelsen, Rijkswaterstaat, GSA, Geoland, FEMA, Intermap and the GIS user community, Source: Esri, Maxar, Earthstar Geographics, and the GIS User Community, Lewis and	
Citations	Unpaved	Highways	Lakes		
1.2m Resolution Metadata	..... Driveway	----- Interstate Hwy	Streams		
→ Railroads	← Oneway	----- US Hwy			
	→ Oneway	----- Montana Hwy			



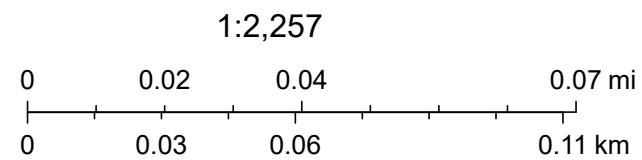
# Harvest Acres Hydrant Area .0574

1.C.5.



1/9/2024, 12:31:44 PM

- |                              |                 |                         |                        |
|------------------------------|-----------------|-------------------------|------------------------|
| World Imagery                | <b>Roadways</b> | ----- Non-Motorized     | Secondary Hwy          |
| Low Resolution 15m Imagery   | Interstate      | ----- Abandoned         | Helena City Limits     |
| High Resolution 60cm Imagery | Divided 4-Lane  | ----- Water Access Only | County Boundary        |
| High Resolution 30cm Imagery | Paved           | ----- Alley             | East Helena City Limit |
| Citations                    | Unpaved         | <b>Highways</b>         | Lakes                  |
| 60cm Resolution Metadata     | ..... Driveway  | Interstate Hwy          | Streams                |
| → Railroads                  | ← Oneway        | US Hwy                  |                        |
|                              | → Oneway        | Montana Hwy             |                        |



Sources: Esri, Airbus DS, USGS, NGA, NASA, CGIAR, N Robinson, NCEAS, NLS, OS, NMA, Geodatastyrelsen, Rijkswaterstaat, GSA, Geoland, FEMA, Intermap and the GIS user community, Source: Esri, Maxar, Earthstar Geographics, and the GIS User Community, Lewis and Clark County, Montana

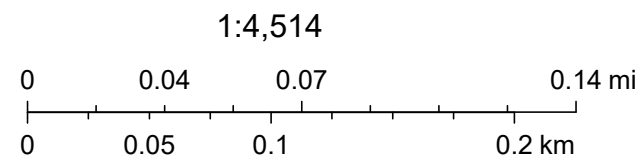


# Canyon Ridge Dry Land Area 4.5 Acres



1/9/2024, 12:14:15 PM

- |                              |                |                         |                        |
|------------------------------|----------------|-------------------------|------------------------|
| World Imagery                | Roadways       | ----- Non-Motorized     | Secondary Hwy          |
| Low Resolution 15m Imagery   | Interstate     | ----- Abandoned         | Helena City Limits     |
| High Resolution 60cm Imagery | Divided 4-Lane | ----- Water Access Only | County Boundary        |
| High Resolution 30cm Imagery | Paved          | ----- Alley             | East Helena City Limit |
| Citations                    | Unpaved        | Highways                | Lakes                  |
| 1.2m Resolution Metadata     | ..... Driveway | ----- Interstate Hwy    | Streams                |
| → Railroads                  | ← Oneway       | ----- US Hwy            |                        |
|                              | → Oneway       | ----- Montana Hwy       |                        |



Sources: Esri, Airbus DS, USGS, NGA, NASA, CGIAR, N Robinson, NCEAS, NLS, OS, NMA, Geodatastyrelsen, Rijkswaterstaat, GSA, Geoland, FEMA, Intermap and the GIS user community, Source: Esri, Maxar, Earthstar Geographics, and the GIS User Community, Lewis and



# Heron Creek Open Space 7.38 Acres



1/9/2024, 12:34:10 PM

World Imagery	Roadways	----- Non-Motorized	Secondary Hwy	1:9,028
Low Resolution 15m Imagery	Interstate	----- Abandoned	Parcel Boundaries	0 0.05 0.1 0.2 mi
High Resolution 60cm Imagery	Divided 4-Lane	----- Water Access Only	Helena City Limits	0 0.1 0.2 0.4 km
High Resolution 30cm Imagery	Paved	----- Alley	County Boundary	
Citations	Unpaved	Highways	East Helena City Limit	
2.4m Resolution Metadata	..... Driveway	----- Interstate Hwy	Lakes	
→ Railroads	← Oneway	----- US Hwy	Streams	
	→ Oneway	----- Montana Hwy		

Esri, NASA, NGA, USGS, FEMA, Source: Esri, Maxar, Earthstar Geographics, and the GIS User Community, Lewis and Clark County/City of Helena GIS Services, Esri Community Maps Contributors, County of Lewis and Clark, Montana State Library, © OpenStreetMap, Microsoft, Esri,



# Red Fox Meadows Stormwater 16.771 Acres



1/9/2024, 1:02:12 PM

World Imagery	Roadways	----- Non-Motorized	Secondary Hwy	1:9,028
Low Resolution 15m Imagery	Interstate	----- Abandoned	Parcel Boundaries	0 0.05 0.1 0.2 mi
High Resolution 60cm Imagery	Divided 4-Lane	----- Water Access Only	Helena City Limits	0 0.1 0.2 0.4 km
High Resolution 30cm Imagery	Paved	----- Alley	County Boundary	
Citations	Unpaved	Highways	East Helena City Limit	
2.4m Resolution Metadata	..... Driveway	Interstate Hwy	Lakes	
→ Railroads	← Oneway	US Hwy	Streams	
	→ Oneway	Montana Hwy		

Esri, NASA, NGA, USGS, FEMA, Source: Esri, Maxar, Earthstar Geographics, and the GIS User Community, Lewis and Clark County/City of Helena GIS Services, Esri Community Maps Contributors, County of Lewis and Clark, Montana State Library, © OpenStreetMap, Microsoft, Esri,



# Panoramic Meadows Trail 2.87 Acres

2.A.4.



1/9/2024, 1:08:20 PM

World Imagery	Roadways	----- Non-Motorized	Secondary Hwy	1:9,028
Low Resolution 15m Imagery	Interstate	----- Abandoned	Parcel Boundaries	0 0.05 0.1 0.2 mi
High Resolution 60cm Imagery	Divided 4-Lane	----- Water Access Only	Helena City Limits	0 0.1 0.2 0.4 km
High Resolution 30cm Imagery	Paved	----- Alley	County Boundary	
Citations	Unpaved	Highways	East Helena City Limit	
2.4m Resolution Metadata	..... Driveway	----- Interstate Hwy	Lakes	
→ Railroads	← Oneway	----- US Hwy	Streams	
	→ Oneway	----- Montana Hwy		

Esri, NASA, NGA, USGS, FEMA, Source: Esri, Maxar, Earthstar Geographics, and the GIS User Community, Lewis and Clark County/City of Helena GIS Services, Esri Community Maps Contributors, County of Lewis and Clark, Montana State Library, © OpenStreetMap, Microsoft, Esri,

Web AppBuilder for ArcGIS



# Saddle Rock Hydrant Area .3 Acres

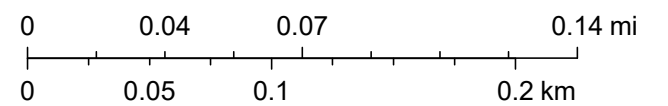
2.A.5.



1/9/2024, 1:10:08 PM

World Imagery	Roadways	----- Non-Motorized	Secondary Hwy
Low Resolution 15m Imagery	Interstate	----- Abandoned	Parcel Boundaries
High Resolution 60cm Imagery	Divided 4-Lane	----- Water Access Only	Helena City Limits
High Resolution 30cm Imagery	Paved	----- Alley	County Boundary
Citations	Unpaved	Highways	East Helena City Limit
1.2m Resolution Metadata	..... Driveway	----- Interstate Hwy	Lakes
→ Railroads	← Oneway	----- US Hwy	Streams
	→ Oneway	----- Montana Hwy	

1:4,514



Sources: Esri, Airbus DS, USGS, NGA, NASA, CGIAR, N Robinson, NCEAS, NLS, OS, NMA, Geodatastyrelsen, Rijkswaterstaat, GSA, Geoland, FEMA, Intermap and the GIS user community, Source: Esri, Maxar, Earthstar Geographics, and the GIS User Community, Lewis and



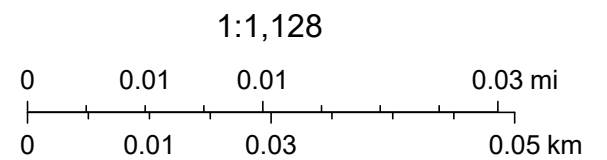
# 46 Degrees N Hydrant Area .06 Acres

2.B.1.



1/9/2024, 11:55:40 AM

- |                              |                |                         |                        |
|------------------------------|----------------|-------------------------|------------------------|
| World Imagery                | Roadways       | ----- Non-Motorized     | Secondary Hwy          |
| Low Resolution 15m Imagery   | Interstate     | ----- Abandoned         | Helena City Limits     |
| High Resolution 60cm Imagery | Divided 4-Lane | ----- Water Access Only | County Boundary        |
| High Resolution 30cm Imagery | Paved          | ----- Alley             | East Helena City Limit |
| Citations                    | Unpaved        | Highways                | Lakes                  |
| 30cm Resolution Metadata     | ..... Driveway | ----- Interstate Hwy    | Streams                |
| → Railroads                  | ← Oneway       | ----- US Hwy            |                        |
|                              | → Oneway       | ----- Montana Hwy       |                        |



Sources: Esri, Airbus DS, USGS, NGA, NASA, CGIAR, N Robinson, NCEAS, NLS, OS, NMA, Geodastyrelsen, Rijkswaterstaat, GSA, Geoland, FEMA, Intermap and the GIS user community, Source: Esri, Maxar, Earthstar Geographics, and the GIS User Community, Lewis and



# 46 Degrees N Trail .327 Acres

2.B.2.



1/9/2024, 12:02:47 PM

World Imagery	Roadways	----- Non-Motorized	Secondary Hwy	1:4,514
Low Resolution 15m Imagery	Interstate	----- Abandoned	Helena City Limits	0 0.04 0.07 0.14 mi
High Resolution 60cm Imagery	Divided 4-Lane	----- Water Access Only	County Boundary	0 0.05 0.1 0.2 km
High Resolution 30cm Imagery	Paved	----- Alley	East Helena City Limit	
Citations	Unpaved	Highways	Lakes	
1.2m Resolution Metadata	..... Driveway	----- Interstate Hwy	Streams	
→ Railroads	← Oneway	----- US Hwy		
	→ Oneway	----- Montana Hwy		

Sources: Esri, Airbus DS, USGS, NGA, NASA, CGIAR, N Robinson, NCEAS, NLS, OS, NMA, Geodastyrelsen, Rijkswaterstaat, GSA, Geoland, FEMA, Intermap and the GIS user community, Source: Esri, Maxar, Earthstar Geographics, and the GIS User Community, Lewis and Clark

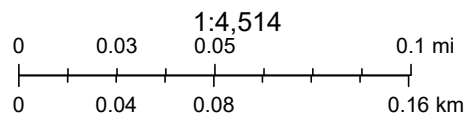


# Canyon Ferry Crossing Fire Tank & Hydrant 0.16 acres

2.B.3.



1/31/2024, 1:31:48 PM



- |                              |                     |                  |                           |
|------------------------------|---------------------|------------------|---------------------------|
| World Imagery                | — Paved             | Highways         | ● Private Non-Profit      |
| Low Resolution 15m Imagery   | — Unpaved           | — Interstate Hwy | ● Residential Mult-Family |
| High Resolution 60cm Imagery | ..... Driveway      | — US Hwy         | ● School                  |
| High Resolution 30cm Imagery | — Oneway            | — Montana Hwy    | □ Parcel Boundaries       |
| Citations                    | — Oneway            | — Secondary Hwy  | □ Helena City Limits      |
| 1.2m Resolution Metadata     | — Non-Motorized     | Addresses        | □ County Boundary         |
| — Railroads                  | — Abandoned         | ● Residential    | □ East Helena City Limit  |
| Roadways                     | — Water Access Only | ● Commercial     | □ Lakes                   |
| — Interstate                 | — Alley             | ● Public         | — Streams                 |
| — Divided 4-Lane             |                     | ● Miscellaneous  |                           |

Sources: Esri, Airbus DS, USGS, NGA, NASA, CGIAR, N Robinson, NCEAS, NLS, OS, NMA, Geodatastyrelsen, Rijkswaterstaat, GSA, Geoland, FEMA, Intermap and the GIS user community, Source: Esri, Maxar, Earthstar Geographics, and the GIS User Community, Lewis and Clark County/City of Helena GIS Services, The data contained on this map are NOT the official

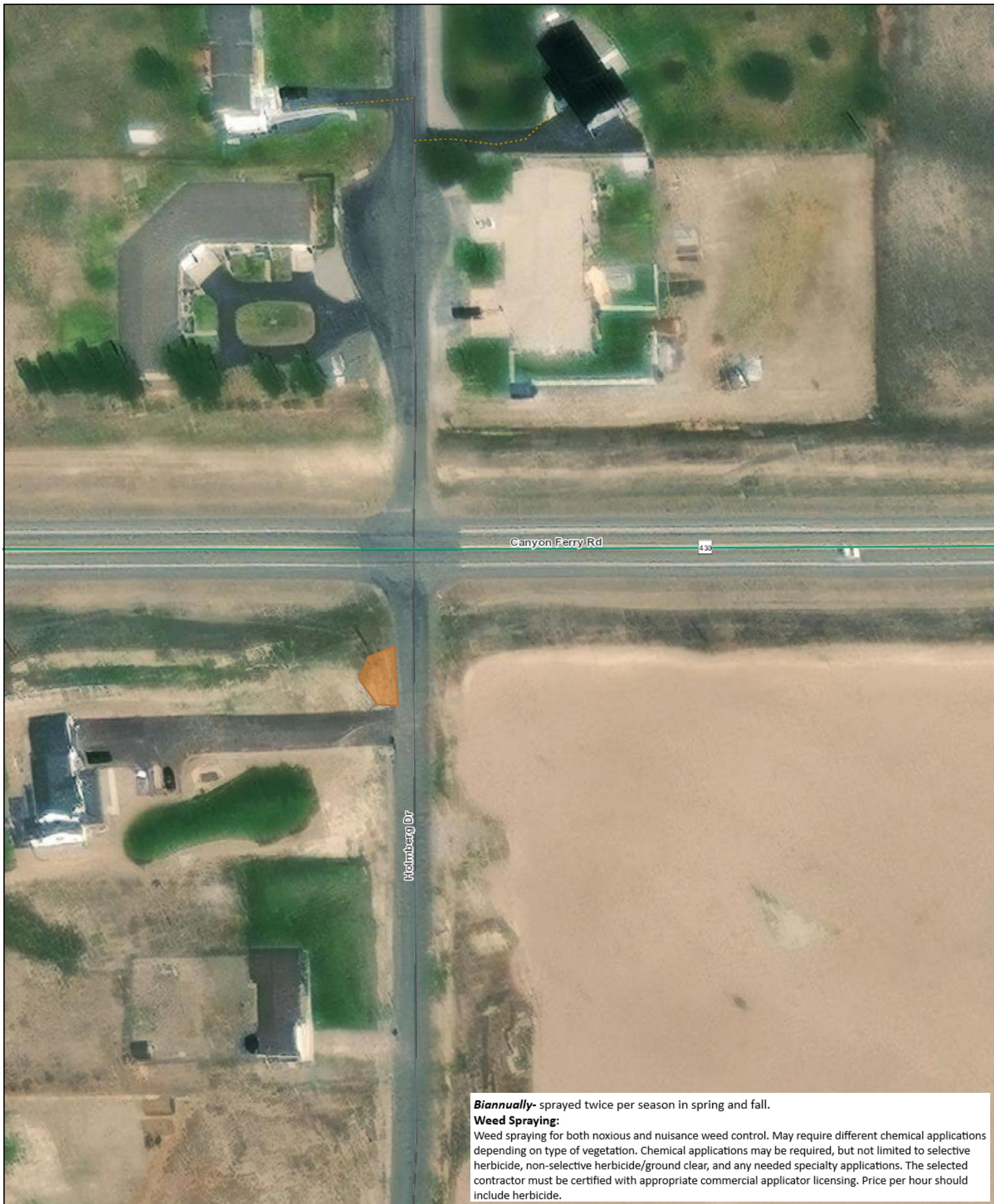
Web AppBuilder for ArcGIS

Esri Community Maps Contributors, County of Lewis and Clark, Montana State Library, © OpenStreetMap, Microsoft, Esri, TomTom, Garmin, SafeGraph, GeoTechnologies, Inc, METI/NASA, USGS,



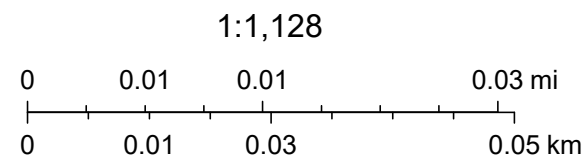
# Canyon Ridge Hydrant Area .114 Acres

2.B.4.



1/9/2024, 12:09:44 PM

- |                              |                 |                     |                        |
|------------------------------|-----------------|---------------------|------------------------|
| World Imagery                | <b>Roadways</b> | ----- Non-Motorized | Secondary Hwy          |
| Low Resolution 15m Imagery   | Interstate      | ----- Abandoned     | Helena City Limits     |
| High Resolution 60cm Imagery | Divided 4-Lane  | Water Access Only   | County Boundary        |
| High Resolution 30cm Imagery | Paved           | Alley               | East Helena City Limit |
| Citations                    | Unpaved         | <b>Highways</b>     | Lakes                  |
| 30cm Resolution Metadata     | Driveway        | Interstate Hwy      | Streams                |
| → Railroads                  | Oneway          | US Hwy              |                        |
|                              | Oneway          | Montana Hwy         |                        |



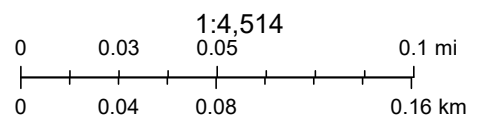
Sources: Esri, Airbus DS, USGS, NGA, NASA, CGIAR, N Robinson, NCEAS, NLS, OS, NMA, Geodatastyrelsen, Rijkswaterstaat, GSA, Geoland, FEMA, Intermap and the GIS user community, Source: Esri, Maxar, Earthstar Geographics, and the GIS User Community, Lewis and



# Country Winds Fire Tank & Hydrant 0.06 acres 2.B.5.



1/31/2024, 1:24:15 PM



- |                              |                     |                  |                           |
|------------------------------|---------------------|------------------|---------------------------|
| World Imagery                | — Paved             | Highways         | ● Private Non-Profit      |
| Low Resolution 15m Imagery   | — Unpaved           | — Interstate Hwy | ● Residential Mult-Family |
| High Resolution 60cm Imagery | ..... Driveway      | — US Hwy         | ● School                  |
| High Resolution 30cm Imagery | ← Oneway            | — Montana Hwy    | □ Parcel Boundaries       |
| Citations                    | → Oneway            | — Secondary Hwy  | □ Helena City Limits      |
| 1.2m Resolution Metadata     | --- Non-Motorized   | Addresses        | □ County Boundary         |
| → Railroads                  | — Abandoned         | ● Residential    | □ East Helena City Limit  |
| Roadways                     | — Water Access Only | ● Commercial     | □ Lakes                   |
| — Interstate                 | — Alley             | ● Public         | — Streams                 |
| — Divided 4-Lane             |                     | ● Miscellaneous  |                           |

Sources: Esri, Airbus DS, USGS, NGA, NASA, CGIAR, N Robinson, NCEAS, NLS, OS, NMA, Geodatastyrelsen, Rijkswaterstaat, GSA, Geoland, FEMA, Intermap and the GIS user community, Source: Esri, Maxar, Earthstar Geographics, and the GIS User Community, Lewis and Clark County/City of Helena GIS Services, The data contained on this map are NOT the official

Web AppBuilder for ArcGIS



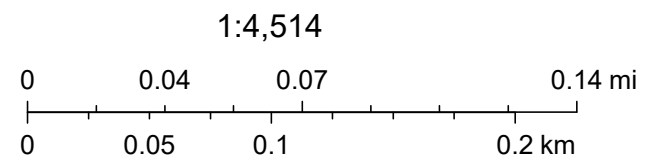
# Frontier Village Trail .0296 Acres

2.B.6.



1/9/2024, 12:20:48 PM

- |                              |                |                         |                        |
|------------------------------|----------------|-------------------------|------------------------|
| World Imagery                | Roadways       | ----- Non-Motorized     | Secondary Hwy          |
| Low Resolution 15m Imagery   | Interstate     | ----- Abandoned         | Helena City Limits     |
| High Resolution 60cm Imagery | Divided 4-Lane | ----- Water Access Only | County Boundary        |
| High Resolution 30cm Imagery | Paved          | ----- Alley             | East Helena City Limit |
| Citations                    | Unpaved        | Highways                | Lakes                  |
| 1.2m Resolution Metadata     | ..... Driveway | ----- Interstate Hwy    | Streams                |
| → Railroads                  | ← Oneway       | ----- US Hwy            |                        |
|                              | → Oneway       | ----- Montana Hwy       |                        |



Sources: Esri, Airbus DS, USGS, NGA, NASA, CGIAR, N Robinson, NCEAS, NLS, OS, NMA, Geodatastyrelsen, Rijkswaterstaat, GSA, Geoland, FEMA, Intermap and the GIS user community, Source: Esri, Maxar, Earthstar Geographics, and the GIS User Community, Lewis and



# Frontier Village Hydrant Area .0574

2.B.7.



1/9/2024, 12:19:09 PM





# Golden Meadows Hydrant Area .0574 Acres

2.B.8.



1/9/2024, 12:24:22 PM

World Imagery	<b>Roadways</b>	----- Non-Motorized	Secondary Hwy	1:2,257	
Low Resolution 15m Imagery	Interstate	----- Abandoned	Helena City Limits	0 0.02 0.04 0.07 mi	
High Resolution 60cm Imagery	Divided 4-Lane	----- Water Access Only	County Boundary	0 0.03 0.06 0.11 km	
High Resolution 30cm Imagery	Paved	----- Alley	East Helena City Limit	Sources: Esri, Airbus DS, USGS, NGA, NASA, CGIAR, N Robinson, NCEAS, NLS, OS, NMA, Geodatastyrelsen, Rijkswaterstaat, GSA, Geoland, FEMA, Intermap and the GIS user community, Source: Esri, Maxar, Earthstar Geographics, and the GIS User Community, Lewis and	
Citations	Unpaved	<b>Highways</b>	Lakes		
60cm Resolution Metadata	----- Driveway	----- Interstate Hwy	Streams		
→ Railroads	← Oneway	----- US Hwy			
	→ Oneway	----- Montana Hwy			



# Grand Vista Hydrant Area 1.6 Acres

2.B.9.



1/9/2024, 12:27:31 PM

World Imagery	<b>Roadways</b>	----- Non-Motorized	----- Secondary Hwy
Low Resolution 15m Imagery	Interstate	----- Abandoned	▭ Helena City Limits
High Resolution 60cm Imagery	Divided 4-Lane	----- Water Access Only	▭ County Boundary
High Resolution 30cm Imagery	Paved	----- Alley	▭ East Helena City Limit
Citations	Unpaved	<b>Highways</b>	▭ Lakes
1.2m Resolution Metadata	..... Driveway	----- Interstate Hwy	----- Streams
→ Railroads	← Oneway	----- US Hwy	
	→ Oneway	----- Montana Hwy	

1:4,514

0 0.04 0.07 0.14 mi

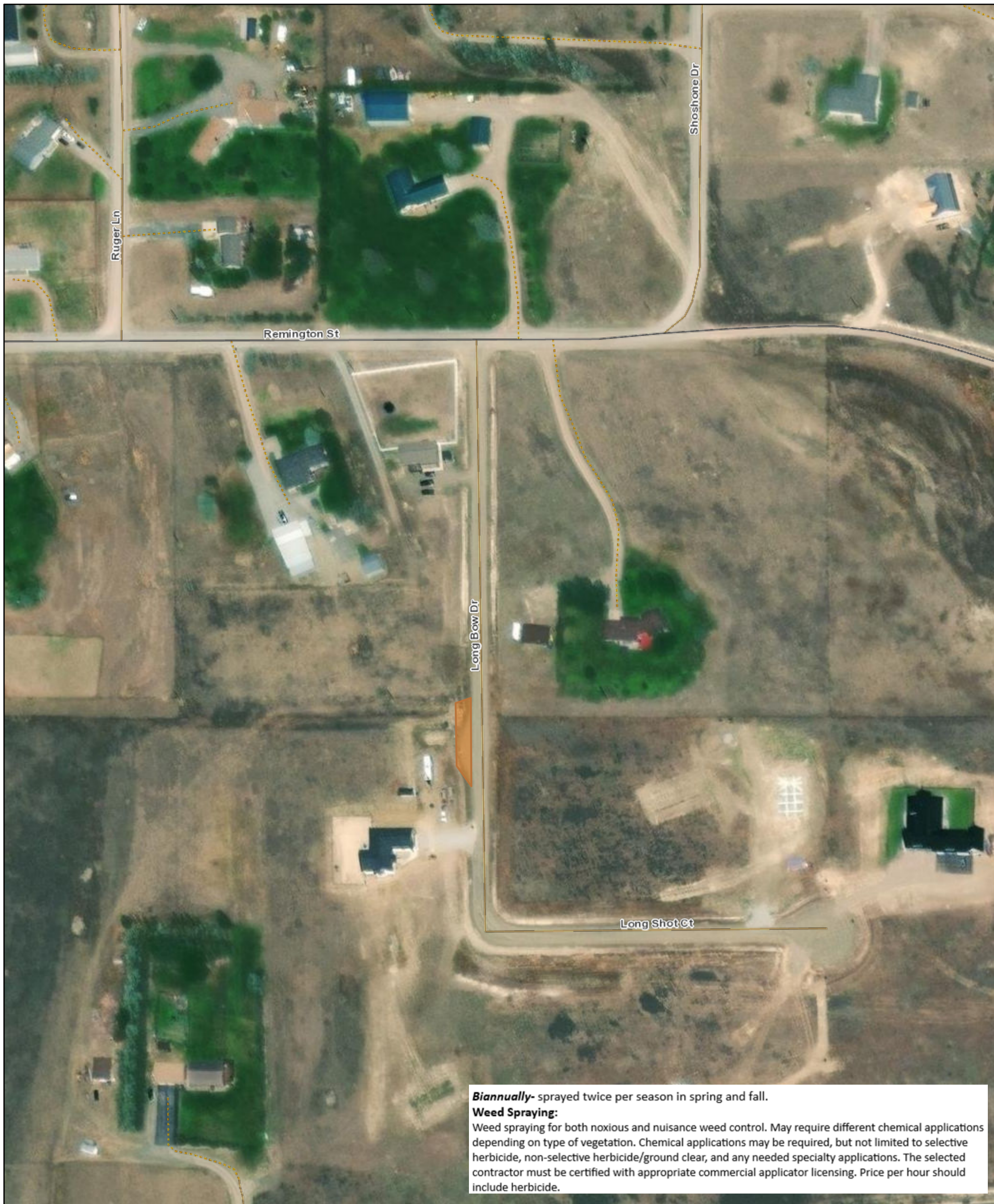
0 0.05 0.1 0.2 km

Sources: Esri, Airbus DS, USGS, NGA, NASA, CGIAR, N Robinson, NCEAS, NLS, OS, NMA, Geodatastyrelsen, Rijkswaterstaat, GSA, Geoland, FEMA, Intermap and the GIS user community, Source: Esri, Maxar, Earthstar Geographics, and the GIS User Community, Lewis and



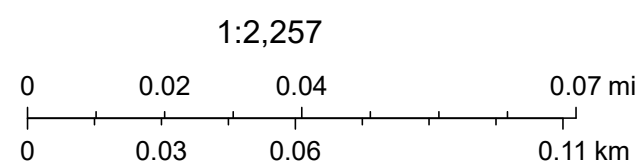
# Harvest Acres Hydrant Area .0574

2.B.10.



1/9/2024, 12:31:44 PM

- |                              |                |                         |                        |
|------------------------------|----------------|-------------------------|------------------------|
| World Imagery                | Roadways       | ----- Non-Motorized     | Secondary Hwy          |
| Low Resolution 15m Imagery   | Interstate     | ----- Abandoned         | Helena City Limits     |
| High Resolution 60cm Imagery | Divided 4-Lane | ----- Water Access Only | County Boundary        |
| High Resolution 30cm Imagery | Paved          | ----- Alley             | East Helena City Limit |
| Citations                    | Unpaved        | Highways                | Lakes                  |
| 60cm Resolution Metadata     | Driveway       | Interstate Hwy          | Streams                |
| → Railroads                  | Oneway         | US Hwy                  |                        |
|                              | Oneway         | Montana Hwy             |                        |



Sources: Esri, Airbus DS, USGS, NGA, NASA, CGIAR, N Robinson, NCEAS, NLS, OS, NMA, Geodatastyrelsen, Rijkswaterstaat, GSA, Geoland, FEMA, Intermap and the GIS user community, Source: Esri, Maxar, Earthstar Geographics, and the GIS User Community, Lewis and



# Heron Creek Trails 4.65 Acres

2.B.11.



1/9/2024, 1:31:57 PM

World Imagery	Roadways	----- Non-Motorized	Secondary Hwy	1:9,028
Low Resolution 15m Imagery	Interstate	----- Abandoned	Parcel Boundaries	0 0.05 0.1 0.2 mi
High Resolution 60cm Imagery	Divided 4-Lane	----- Water Access Only	Helena City Limits	0 0.1 0.2 0.4 km
High Resolution 30cm Imagery	Paved	----- Alley	County Boundary	
Citations	Unpaved	Highways	East Helena City Limit	
2.4m Resolution Metadata	..... Driveway	----- Interstate Hwy	Lakes	
→ Railroads	← Oneway	----- US Hwy	Streams	
	→ Oneway	----- Montana Hwy		

Esri, NASA, NGA, USGS, FEMA | Esri Community Maps Contributors, County of Lewis and Clark, Montana State Library, © OpenStreetMap, Microsoft, Esri, TomTom, Garmin, SafeGraph, GeoTechnologies, Inc, METI/

Web AppBuilder for ArcGIS

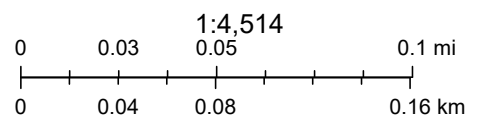


# Kamp Fire Hydrant Area 0.06 acres

2.B.12.



1/31/2024, 1:28:08 PM



- |                              |                     |                  |                            |
|------------------------------|---------------------|------------------|----------------------------|
| World Imagery                | — Paved             | Highways         | ● Private Non-Profit       |
| Low Resolution 15m Imagery   | — Unpaved           | — Interstate Hwy | ● Residential Multi-Family |
| High Resolution 60cm Imagery | ..... Driveway      | — US Hwy         | ● School                   |
| High Resolution 30cm Imagery | ← Oneway            | — Montana Hwy    | □ Parcel Boundaries        |
| Citations                    | → Oneway            | — Secondary Hwy  | □ Helena City Limits       |
| 1.2m Resolution Metadata     | --- Non-Motorized   | Addresses        | □ County Boundary          |
| → Railroads                  | --- Abandoned       | ● Residential    | □ East Helena City Limit   |
| Roadways                     | — Water Access Only | ● Commercial     | □ Lakes                    |
| — Interstate                 | — Alley             | ● Public         | □ Streams                  |
| — Divided 4-Lane             |                     | ● Miscellaneous  |                            |

Sources: Esri, Airbus DS, USGS, NGA, NASA, CGIAR, N Robinson, NCEAS, NLS, OS, NMA, Geodatastyrelsen, Rijkswaterstaat, GSA, Geoland, FEMA, Intermap and the GIS user community, Source: Esri, Maxar, Earthstar Geographics, and the GIS User Community, Lewis and Clark County/City of Helena GIS Services, The data contained on this map are NOT the official

Web AppBuilder for ArcGIS

Esri Community Maps Contributors, County of Lewis and Clark, Montana State Library, © OpenStreetMap, Microsoft, Esri, TomTom, Garmin, SafeGraph, GeoTechnologies, Inc, METI/NASA, USGS,



# Red Fox Meadows Trail 1.404 Acres

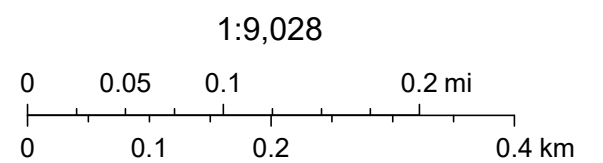
2.B.13.



**Biannually-** sprayed twice per season in spring and fall.  
**Weed Spraying:**  
 Weed spraying for both noxious and nuisance weed control. May require different chemical applications depending on type of vegetation. Chemical applications may be required, but not limited to selective herbicide, non-selective herbicide/ground clear, and any needed specialty applications. The selected contractor must be certified with appropriate commercial applicator licensing. Price per hour should include herbicide.

1/9/2024, 12:57:56 PM

- |                              |                  |                     |                     |
|------------------------------|------------------|---------------------|---------------------|
| World Imagery                | → Railroads      | ← Oneway            | Highways            |
| Low Resolution 15m Imagery   | Roadways         | → Oneway            | — Interstate Hwy    |
| High Resolution 60cm Imagery | — Interstate     | --- Non-Motorized   | — US Hwy            |
| High Resolution 30cm Imagery | — Divided 4-Lane | — Abandoned         | — Montana Hwy       |
| Citations                    | — Paved          | — Water Access Only | — Secondary Hwy     |
| 2.4m Resolution Metadata     | — Unpaved        | — Alley             | □ Parcel Boundaries |
|                              | ... Driveway     |                     |                     |

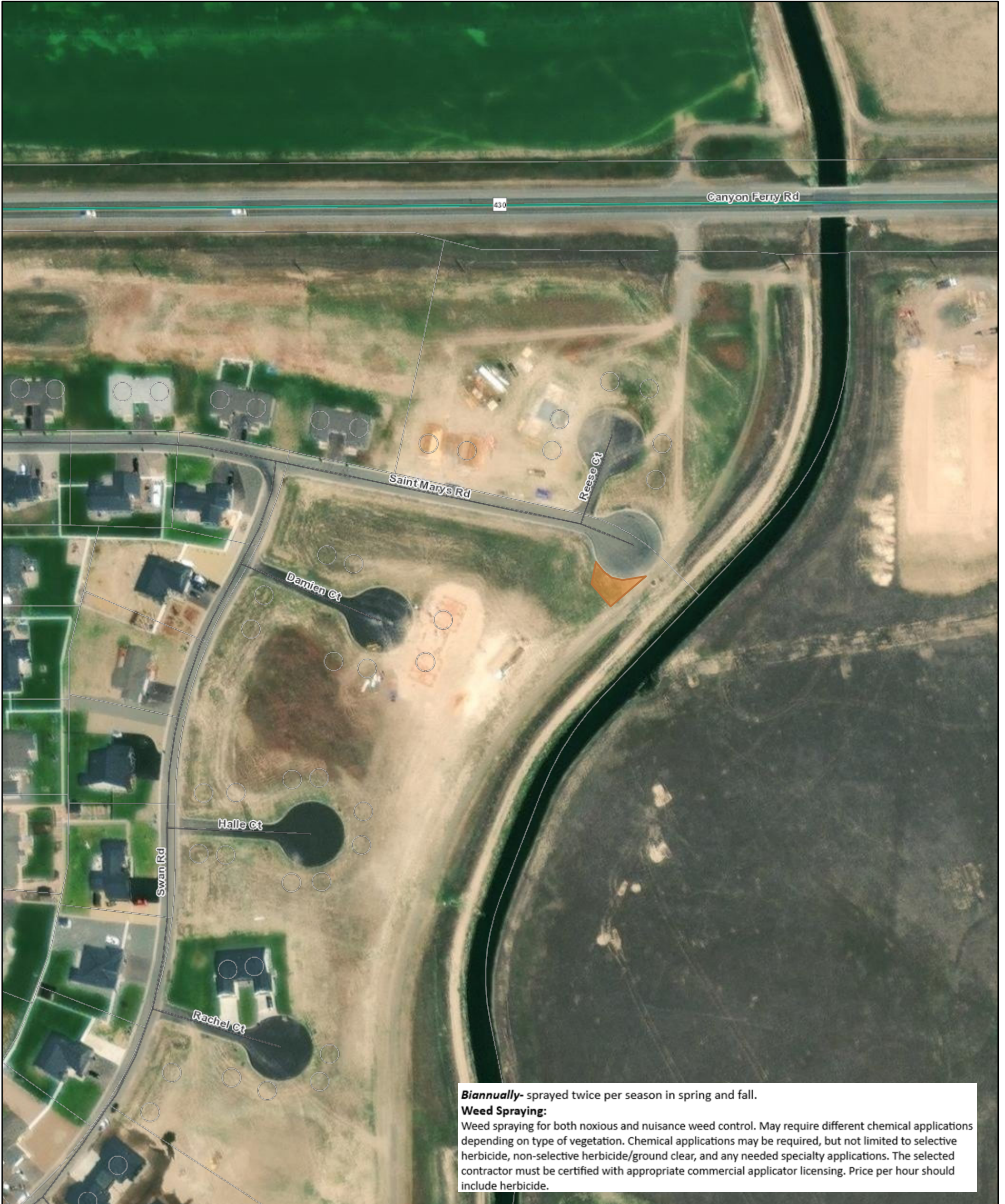


Esri, NASA, NGA, USGS, FEMA, Source: Esri, Maxar, Earthstar Geographics, and the GIS User Community, Lewis and Clark County/City of Helena GIS Services, Esri Community Maps Contributors, County of Lewis and Clark, Montana State Library, © OpenStreetMap, Microsoft, Esri,



# Red Fox Meadows Hydrant Area .0574 Acres

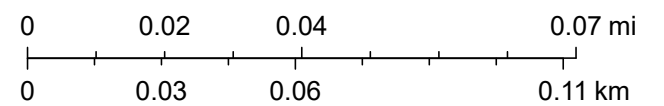
2.B.14.



1/9/2024, 1:03:56 PM

World Imagery	<b>Roadways</b>	----- Non-Motorized	Secondary Hwy
Low Resolution 15m Imagery	Interstate	----- Abandoned	Parcel Boundaries
High Resolution 60cm Imagery	Divided 4-Lane	----- Water Access Only	Helena City Limits
High Resolution 30cm Imagery	Paved	----- Alley	County Boundary
Citations	Unpaved	<b>Highways</b>	East Helena City Limit
60cm Resolution Metadata	..... Driveway	Interstate Hwy	Lakes
→ Railroads	← Oneway	US Hwy	Streams
	→ Oneway	Montana Hwy	

1:2,257

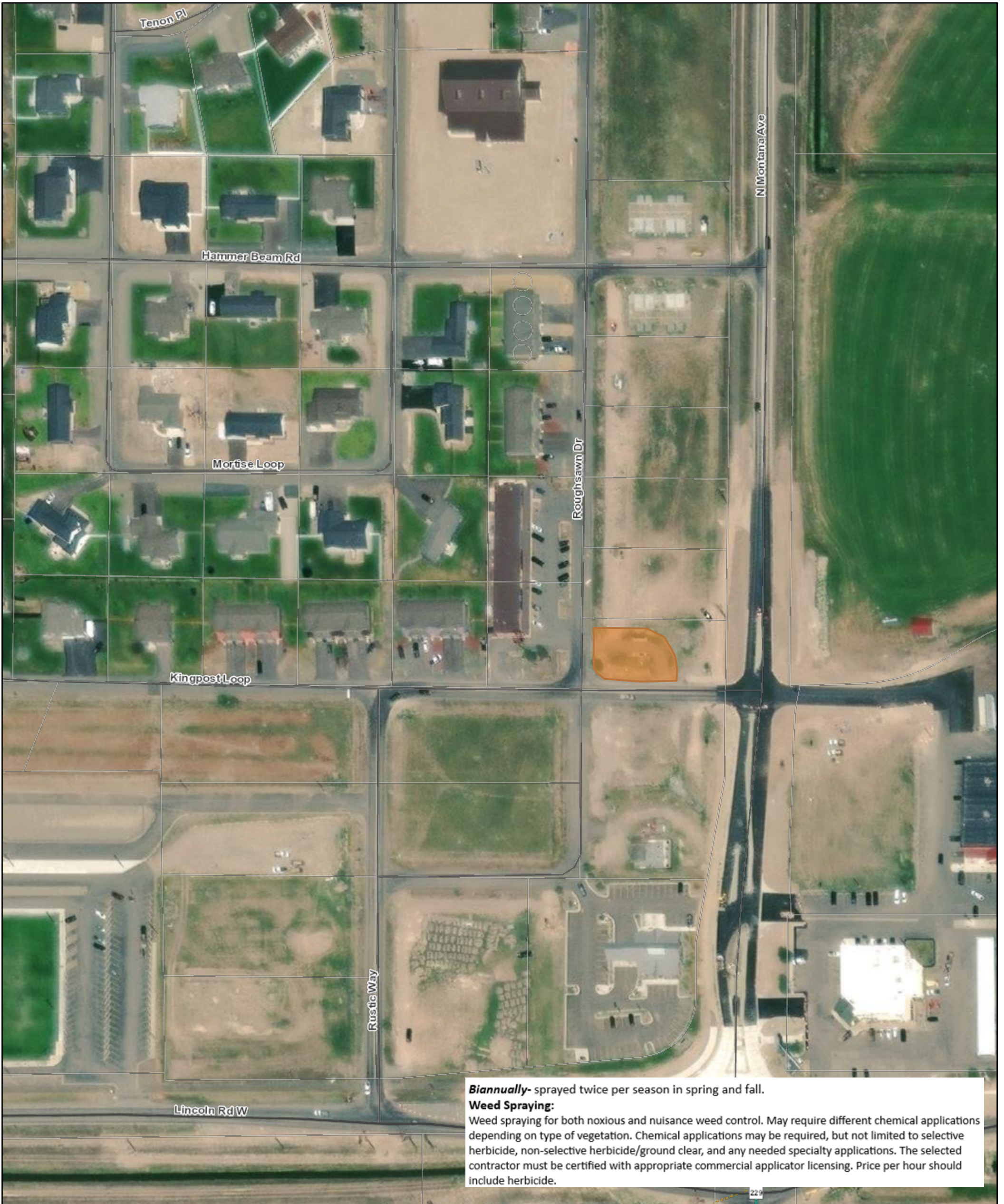


Sources: Esri, Airbus DS, USGS, NGA, NASA, CGIAR, N Robinson, NCEAS, NLS, OS, NMA, Geodatastyrelsen, Rijkswaterstaat, GSA, Geoland, FEMA, Intermap and the GIS user community, Source: Esri, Maxar, Earthstar Geographics, and the GIS User Community, Lewis and



# Timber Work Mailbox Area .19 Acres

2.B.15.



1/9/2024, 1:12:22 PM

World Imagery	Roadways	----- Non-Motorized	Secondary Hwy	1:2,257
Low Resolution 15m Imagery	Interstate	----- Abandoned	Parcel Boundaries	0 0.02 0.04 0.07 mi
High Resolution 60cm Imagery	Divided 4-Lane	----- Water Access Only	Helena City Limits	0 0.03 0.06 0.11 km
High Resolution 30cm Imagery	Paved	----- Alley	County Boundary	Sources: Esri, Airbus DS, USGS, NGA, NASA, CGIAR, N
Citations	Unpaved	Highways	East Helena City Limit	Robinson, NCEAS, NLS, OS, NMA, Geodatastyrelsen,
60cm Resolution Metadata	..... Driveway	----- Interstate Hwy	Lakes	Rijkswaterstaat, GSA, Geoland, FEMA, Intermap and the
→ Railroads	← Oneway	----- US Hwy	Streams	GIS user community, Source: Esri, Maxar, Earthstar
	→ Oneway	----- Montana Hwy		Geographics, and the GIS User Community, Lewis and



# Timber Work Open Space 1.45 Acres

2.B.16.



1/9/2024, 1:25:03 PM

World Imagery	Roadways	----- Non-Motorized	Secondary Hwy	1:2,257
Low Resolution 15m Imagery	Interstate	----- Abandoned	Parcel Boundaries	
High Resolution 60cm Imagery	Divided 4-Lane	----- Water Access Only	Helena City Limits	0    0.02    0.04    0.07 mi
High Resolution 30cm Imagery	Paved	----- Alley	County Boundary	0    0.03    0.06    0.11 km
Citations	Unpaved	Highways	East Helena City Limit	Sources: Esri, Airbus DS, USGS, NGA, NASA, CGIAR, N Robinson, NCEAS, NLS, OS, NMA, Geodastystyrelsen, Rijkswaterstaat, GSA, Geoland, FEMA, Intermap and the GIS user community, Source: Esri, Maxar, Earthstar Geographics, and the GIS User Community, Lewis and
60cm Resolution Metadata	Driveway	Interstate Hwy	Lakes	
Railroads	Oneway	US Hwy	Streams	
	Oneway	Montana Hwy		



# Canyon Ridge Irrigated .61 Acres



1/9/2024, 12:07:58 PM

World Imagery	Roadways	----- Non-Motorized	Secondary Hwy	1:2,257
Low Resolution 15m Imagery	Interstate	----- Abandoned	Helena City Limits	0 0.02 0.04 0.07 mi
High Resolution 60cm Imagery	Divided 4-Lane	----- Water Access Only	County Boundary	0 0.03 0.06 0.11 km
High Resolution 30cm Imagery	Paved	----- Alley	East Helena City Limit	
Citations	Unpaved	Highways	Lakes	
60cm Resolution Metadata	..... Driveway	----- Interstate Hwy	Streams	
→ Railroads	← Oneway	----- US Hwy		
	→ Oneway	----- Montana Hwy		

Sources: Esri, Airbus DS, USGS, NGA, NASA, CGIAR, N Robinson, NCEAS, NLS, OS, NMA, Geodatastyrelsen, Rijkswaterstaat, GSA, Geoland, FEMA, Intermap and the GIS user community, Source: Esri, Maxar, Earthstar Geographics, and the GIS User Community, Lewis and Clark



# 46 Degrees N Park Area 1.11 Acres



1/9/2024, 11:58:50 AM

World Imagery	<b>Roadways</b>	----- Non-Motorized	----- Secondary Hwy	<b>1:2,257</b>	
Low Resolution 15m Imagery	Interstate	----- Abandoned	----- Helena City Limits	0 0.02 0.04 0.07 mi	
High Resolution 60cm Imagery	Divided 4-Lane	----- Water Access Only	----- County Boundary	0 0.03 0.06 0.11 km	
High Resolution 30cm Imagery	Paved	----- Alley	----- East Helena City Limit	Sources: Esri, Airbus DS, USGS, NGA, NASA, CGIAR, N Robinson, NCEAS, NLS, OS, NMA, Geodatastyrelsen, Rijkswaterstaat, GSA, Geoland, FEMA, Intermap and the GIS user community, Source: Esri, Maxar, Earthstar Geographics, and the GIS User Community, Lewis and	
Citations	Unpaved	<b>Highways</b>	----- Lakes		
60cm Resolution Metadata	----- Driveway	----- Interstate Hwy	----- Streams		
----- Railroads	----- Oneway	----- US Hwy			
	----- Oneway	----- Montana Hwy			



# 46 Degrees N Park Area 1.11 Acres



1/9/2024, 11:58:50 AM

World Imagery	Roadways	----- Non-Motorized	Secondary Hwy	1:2,257
Low Resolution 15m Imagery	Interstate	----- Abandoned	Helena City Limits	0 0.02 0.04 0.07 mi
High Resolution 60cm Imagery	Divided 4-Lane	----- Water Access Only	County Boundary	0 0.03 0.06 0.11 km
High Resolution 30cm Imagery	Paved	----- Alley	East Helena City Limit	
Citations	Unpaved	Highways	Lakes	
60cm Resolution Metadata	..... Driveway	----- Interstate Hwy	Streams	
→ Railroads	← Oneway	----- US Hwy		
	→ Oneway	----- Montana Hwy		

Sources: Esri, Airbus DS, USGS, NGA, NASA, CGIAR, N Robinson, NCEAS, NLS, OS, NMA, Geodatastyrelsen, Rijkswaterstaat, GSA, Geoland, FEMA, Intermap and the GIS user community, Source: Esri, Maxar, Earthstar Geographics, and the GIS User Community, Lewis and



# Canyon Ridge Irrigated .61 Acres



1/9/2024, 12:07:58 PM

World Imagery	Roadways	----- Non-Motorized	Secondary Hwy	1:2,257
Low Resolution 15m Imagery	Interstate	----- Abandoned	Helena City Limits	0 0.02 0.04 0.07 mi
High Resolution 60cm Imagery	Divided 4-Lane	----- Water Access Only	County Boundary	0 0.03 0.06 0.11 km
High Resolution 30cm Imagery	Paved	----- Alley	East Helena City Limit	
Citations	Unpaved	Highways	Lakes	
60cm Resolution Metadata	..... Driveway	----- Interstate Hwy	Streams	
→ Railroads	← Oneway	----- US Hwy		
	→ Oneway	----- Montana Hwy		

Sources: Esri, Airbus DS, USGS, NGA, NASA, CGIAR, N Robinson, NCEAS, NLS, OS, NMA, Geodatastyrelsen, Rijkswaterstaat, GSA, Geoland, FEMA, Intermap and the GIS user community, Source: Esri, Maxar, Earthstar Geographics, and the GIS User Community, Lewis and Clark