

RESOLUTION 2024 - 101

A RESOLUTION TO DECLARE DUFFY LANE A COUNTY ROAD

WHEREAS, the Board of County Commissions has the authority to declare a dedicated public access easement a County Road pursuant to 7-14-2101(4)(b)(ii), MCA; and

WHEREAS, Canyon Creek to Beutore Road, now Duffy Lane, was declared a "Public Highway" on June 9, 1898 by the Lewis and Clark County Board of County Commissioners.

WHEREAS, the County received a request from Trinity School District #4, owner of that parcel located at 7435 Duffy Lane, to make Duffy Lane a County Road.

NOW, THEREFORE, BE IT RESOLVED by the Board of County Commissioners:

1. That the Board hereby declares Duffy Lane , an east west connector, connecting Secondary Highway 279, with Chevallier Drive, located in Canyon Creek Montana a County Road, as shown on the attached portion of the 1897 survey.

DATED this 10 day of September, 2024.

LEWIS AND CLARK COUNTY
BOARD OF COMMISSIONERS

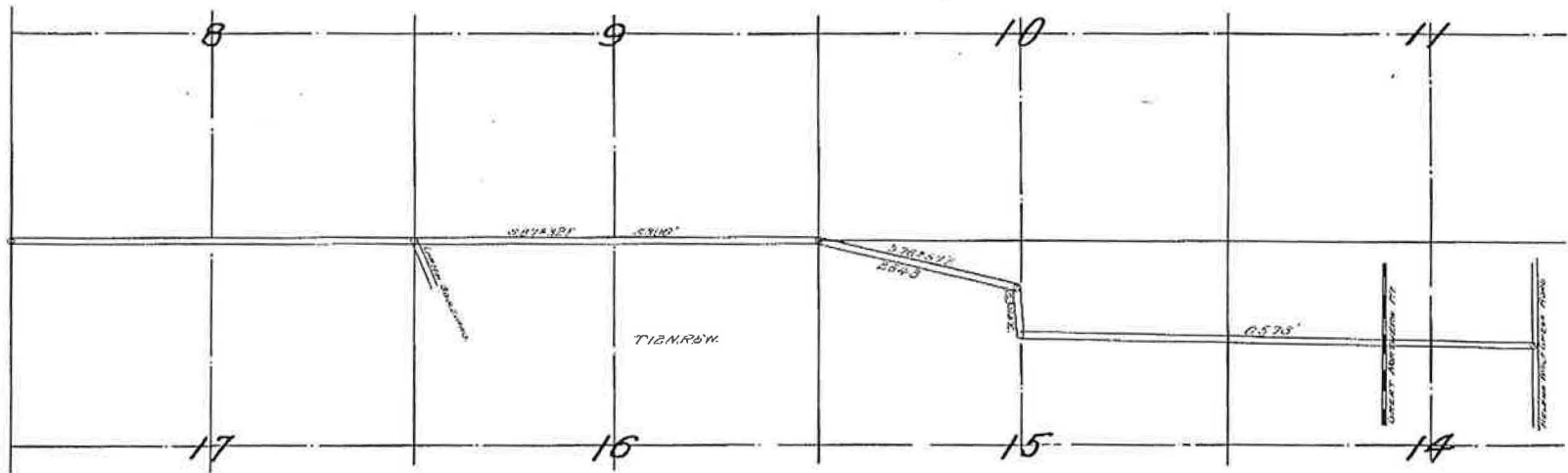

Andy Hunthausen, Chair

Attest:


Amy Reeves, Clerk of the Board

Attachment: Plat exhibit





LEWIS & CLARK COUNTY
 MONTANA
 LITTLE PRICKLY PEAR ROAD
 Scale 1 in = 1000 ft

COMMISSIONERS
 JOHN LARSON
 W.M. BIGGS
 GEO LANSTRUM

SURVEYED 1897 BY P.S.A. BICKEL
 PLATTED BY P.G. POORE.