

RESOLUTION 2023 – 20

A RESOLUTION ESTABLISHING COMMISSION DISTRICT BOUNDARIES IN LEWIS AND CLARK COUNTY

WHEREAS, 7-4-2102, MCA, states that in every county of the state, following each federal decennial census, the board of county commissioners shall divide their respective counties into as many commissioner districts as there are county commissioners and ensure that the districts are as compact and equal in population and area as possible.

NOW, THEREFORE BE IT RESOLVED, by the Board of County Commissioners of Lewis and Clark County that the commission districts are hereby defined and identified and numbered attached hereto as Exhibit "A" – staff memo and recommended district maps.

BE IT FURTHER RESOLVED, that in accordance with 7-4-2102, (2) MCA, that the newly established districts will be submitted to the District Court for review and approval.

Dated this 6TH day of April, 2023

LEWIS AND CLARK COUNTY
BOARD OF COMMISSIONERS



Tom Rolfe, Chair

ATTEST:



Amy Reeves, Clerk of the Board

Attachment: Exhibit A



Recommendations for Lewis and Clark County Commission District Boundaries

Following each decennial U.S. Census Montana counties are required to divide their respective county into County Commission districts. The subsequent information describes the proposed boundaries for Lewis and Clark County districts. Recommendations for establishing County Commission districts were developed using population data available from the 2020 Census (Block data) and existing County Commission boundaries. Per 2020 Decennial Census, Lewis and Clark County's total population was 70,973. This is approximately 7,578 more population than the 2010 Census count of 63,395.

Montana law states the board of county commissioners shall ensure the districts are as compact and equal in population and area as possible. Mont. Code Ann. § 7-4-2102. Compliance with this statute and other district boundary considerations were contemplated in developing these recommendations. The current district boundaries, approved in 2011, were drawn to consolidate areas and increase the use of primary roads and waterways in order to improve identifiableness of said district boundaries.

Table 1 displays the comparison and amount of growth each district had from 2010 to 2020 Census counts. As District 1 will be the next up for election, there is some hesitancy to move a large number of people out of that district into another. While it would be possible to reposition the population it could result in alienating individuals from future candidacy or create abnormal boundaries.

The current County Commission districts, as drawn, are equal in geographic size, with only a 0.1% variation. Those same districts, when calculated using 2020 population count, show only a small percentage of 0.6% variation in population. With the consideration to limit repositioning residents from one district to another, and maintaining the completeness and identifiableness of districts, it is the recommendation the current existing County Commissioner District boundaries be retained and carry through as the proposed boundaries for the next decennial.

Table 2 displays the population distribution and geographic area for the proposed boundaries.

Maps 1 and 2 display the proposed boundaries for Lewis and Clark County Commission Districts. Map 1 shows all the county area and presents the countywide configuration of the proposed County Commission District boundaries. Map 2 shows a view of the proposed district boundaries as they lie within the Helena Valley and City of Helena.

Exhibit 'A'

Table 1.

For comparison purposes below is the population distribution from 2010 County Commission District boundaries with 2010 Census figures:

Population by district (Census 2010 = 63,395)

	District 1	District 2	District 3
Population	21,073	21,138	21,184
% of Total	33.2%	33.3%	33.4%

Change by district (Census 2010 to 2020 increase of 7,578)

	District 1	District 2	District 3
Pop. Change	+ 2,878	+ 2,425	+ 2,275
% of Increase	38%	32%	30%

Table 2.

Using the current County Commission boundaries, as proposed, the population and geographic area distribution are as follows:

Population by district (Census 2020 = 70,973)

	District 1	District 2	District 3
Population	23,951	23,563	23,459
% of Total	33.7	33.2	33.1

County geographic area by district (Total area = 3497)

	District 1	District 2	District 3
Area	1,166	1,163	1,167
% of Total	33.4	33.3	33.4

Lewis and Clark County Proposed Commission District Boundaries

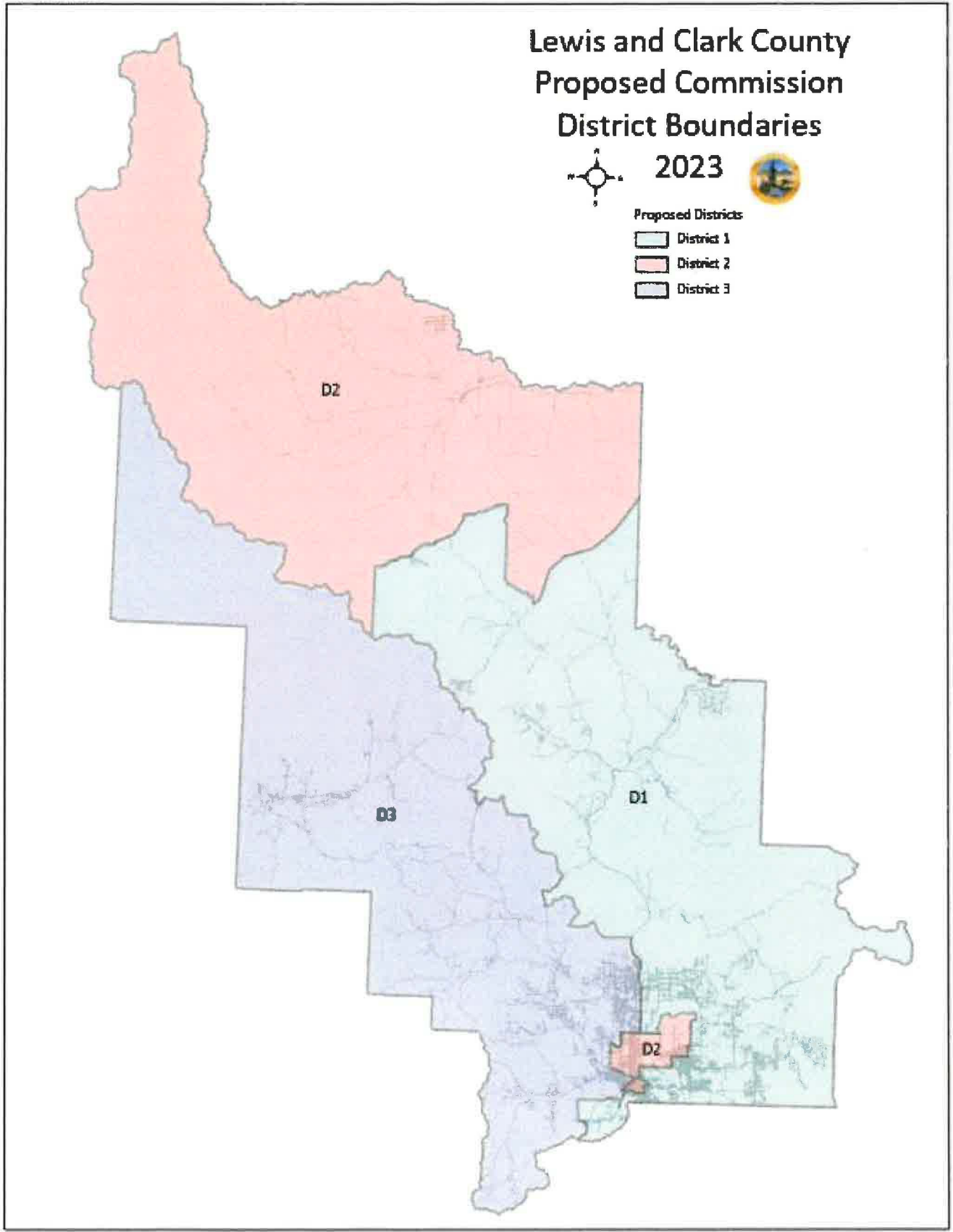


2023

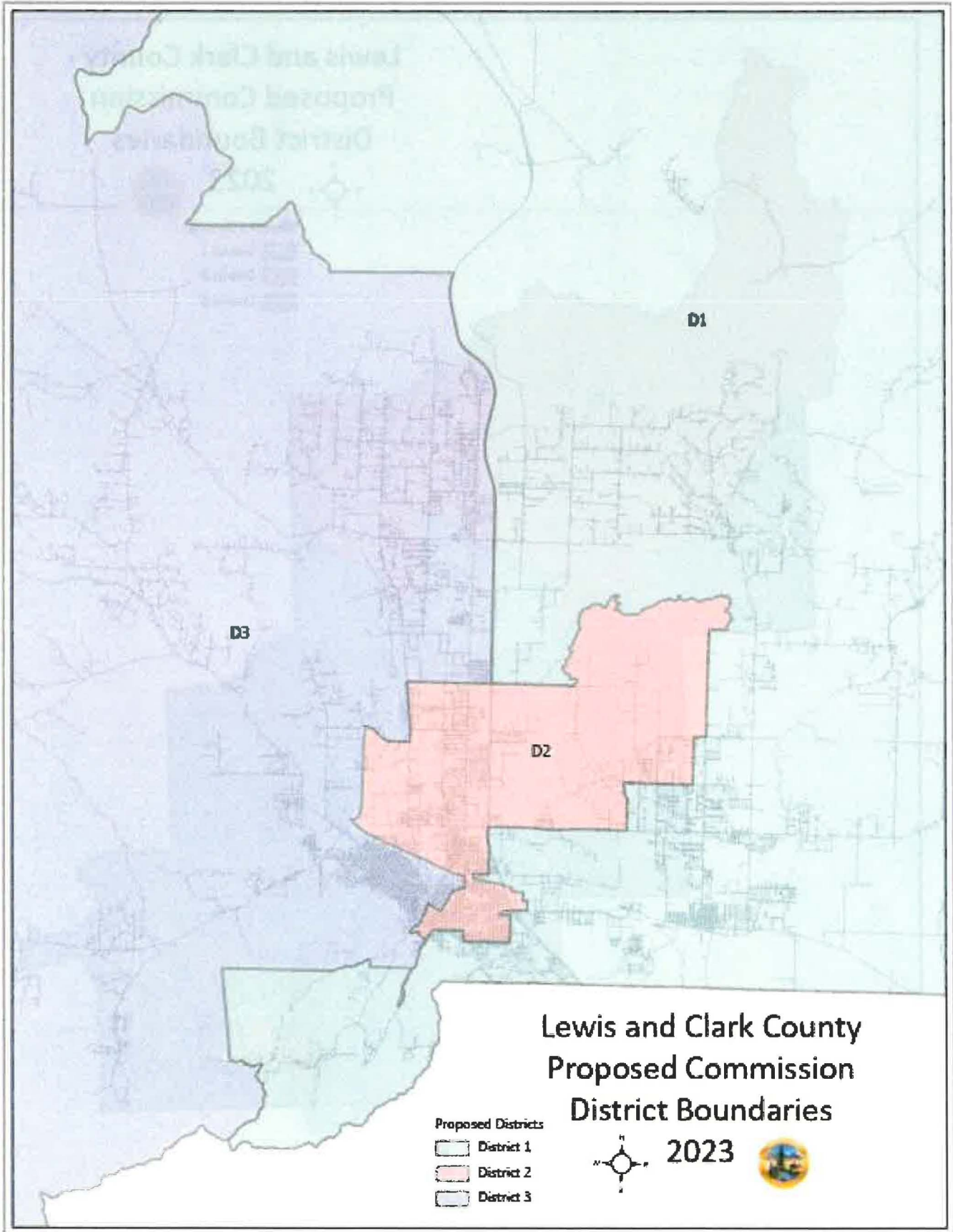


Proposed Districts:

- District 1
- District 2
- District 3



Map 1 – Proposed Lewis and Clark County Commission District Boundaries



Map 2 – Proposed Lewis and Clark County Commission District Boundaries (Helena Valley area)