



RESOLUTION 2014-89
A RESOLUTION RESTRICTING ACCESS ONTO TIZER DRIVE EXTENSION TO
EMERGENCY VEHICLES ONLY

WHEREAS, Southridge Subdivision (aka "York Meadows) developers would like to use an existing County right-of-way, shown as a parcel on the attached Exhibit A, for a second ingress-egress route and legal access point for the 30+ lot development; and

WHEREAS, the route is to be named Tizer Drive Extension, and is to be built north of York Road to County road specifications, and is to lie within a 60 foot wide public access, County Road easement;

WHEREAS, due to concerns about pedestrian safety and the speed of traffic on York Road, the developers, Montana Department of Transportation (MDT) and the County have chosen to prevent or deter use of the Tizer Drive Extension (and its intersection with York Road) by vehicles and pedestrians; and

WHEREAS, in keeping with this effort, the developers have applied for an obtained an approach permit from the MDT for use of an approach onto York Road from Tizer Drive Extension **for emergency vehicles only**;

WHEREAS, the developer has placed a locked gate at the intersection of Tizer Drive Extension and Reardon Road, an internal road commencing in the northwest corner of the subdivision, and the fire district/chief has the key to the lock; and

NOW, THEREFORE BE IT RESOLVED that the Lewis and Clark County Board of County Commissioners, in keeping with this effort to prevent traffic and pedestrian use of Tizer Drive Extension and York Road intersection until traffic speed and pedestrian conditions improve, hereby restrict the use of Tizer Drive Extension, within the County's right-of-way as shown on Exhibit A, to "**emergency vehicles only**" until such time as the public interest requires removal of this restriction;

NOW, THEREFORE BE IT FURTHER RESOLVED that the future removal of the "**emergency vehicles only**" restriction on Tizer Drive Extension must be conditioned upon the completion of MDT approach permit requirements for approaches allowing for more than emergency vehicle access.

DATED this 31 day of July, 2014.

BOARD OF COUNTY COMMISSIONERS
LEWIS AND CLARK COUNTY


Susan Goode Geise, Chair

ATTEST:


Paulette J. DeHart, Clerk of the Board

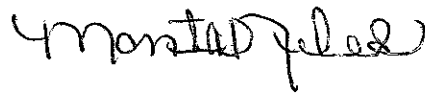
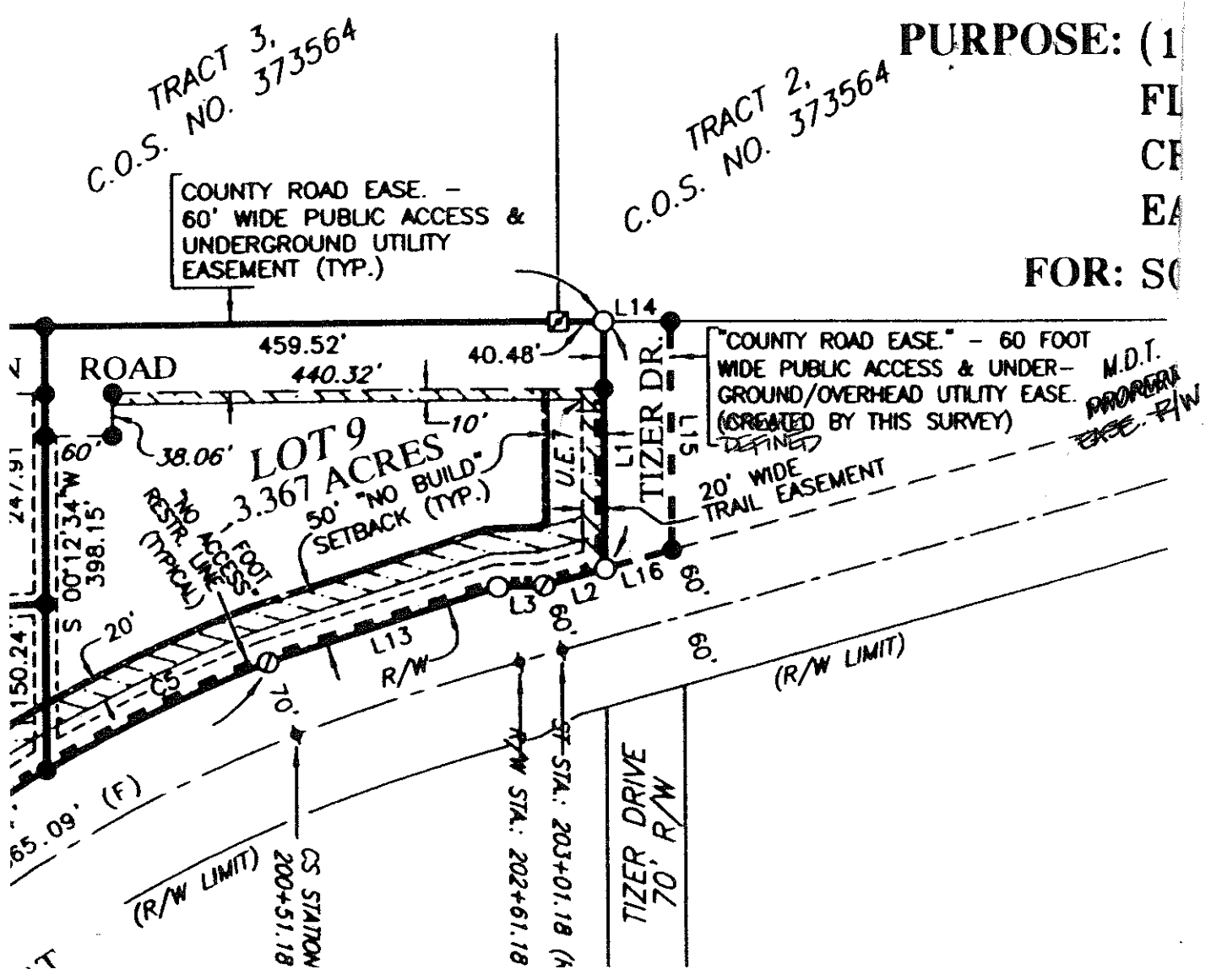

by Montana Police

EXHIBIT A

Sheet 1 of 2

SO

PURPOSE: (1
 FL
 CE
 EA
FOR: SO



RT. INCL. 2-GUYS.

STA. 217+67 - MOVE 2-MT. STATES T. & T. POLES RT. INCL. 1-GUY

- MOVE 1-MONT. POWER CO. POLES LT. & 2-RT. INCL. 2-GUYS.

1-27 - MOVE 1-MT. STATES T. & T. POLE RT.

B-23 EXHIBIT A Sheet 2 of 2

