

RESOLUTION 2013- 42

**RESOLUTION TO CREATE RURAL IMPROVEMENT DISTRICT 2013-1
FOR PANORAMIC MEADOWS SUBDIVISION**

WHEREAS, the Board of County Commissioners has the authority to propose Rural Improvement Districts for the purpose of funding local improvements and/or maintenance, pursuant to Section 7-12-2101, et. seq., MCA; and

WHEREAS, the roads, trails and fire suppression system included within the proposed Rural Improvement District were created to mitigate impacts from the division of properties within the Panoramic Meadows Subdivision (COS#3149238); and

WHEREAS, all property owners have waived their right to protest joining a rural maintenance district for the purpose of equitably funding maintenance of internal roads, Mountain Heritage Drive, common areas and on-site improvements, and fire protection improvements per recorded Covenants (Book M38, Page 4600/Document # 3149239) as recorded within the Clerk and Recorders Office.

NOW, THEREFORE, BE IT FURTHER RESOLVED by the Lewis and Clark County Board of County Commissioners that it does hereby create the Panoramic Meadows Rural Improvement District Number 2013-1 for the purpose of equitably funding road improvements and maintenance within said district.

BE IT FURTHER RESOLVED that the district shall include all lots within the Panoramic Meadows Subdivision (COS#3149238), as identified on Exhibit 'A' and Exhibit 'B' attached hereto and made a part thereof.

BE IT FURTHER RESOLVED that the engineer for the improvements is Dowl HKM engineering.

BE IT FURTHER RESOLVED that the general character of the maintenance, preservation and repair to the following improvements:

1. Internal public access
 - a. Including but not limited to road surfaces/drainage features/signs
 - b. Trail easements
2. Mailbox structure and easement
3. And the fire protection easement and improvements

BE IT FURTHER RESOLVED that the method of assessment shall be allocated per MCA §7-12-2151(1)(d) Each lot, tract, or parcel of land in the district may be assessed an equal amount based upon the total cost of the improvement.

BE IT FURTHER RESOLVED that the estimated annual cost for said maintenance is \$31,311.91 annually or \$396.35 per parcel per year. All funds collected for the district shall be



spent solely to maintain the aforementioned improvements. This assessment shall provide a reserve for future chip seal applications.

BE IT FURTHER RESOLVED that the district shall remain in effect in perpetuity or until such action by the Board of County Commissioners otherwise dissolves the district.

DATED this 28 day of May, 2013.

BOARD OF COUNTY COMMISSIONERS
LEWIS AND CLARK COUNTY

Michael Murray
Michael A. Murray, Chairman

ATTEST:

Paulette J. DeHart me
Paulette J. DeHart, Clerk of the Board

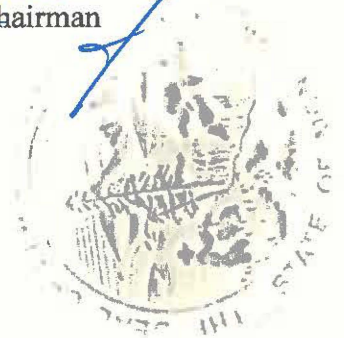
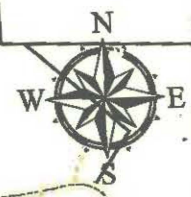


Exhibit A



RID Scope of Service

- RID Boundaries
- Public Access Easements
- Public Trail Easement
- Fire Protection Easement and Improvements
- Mailbox Improvement & Easement

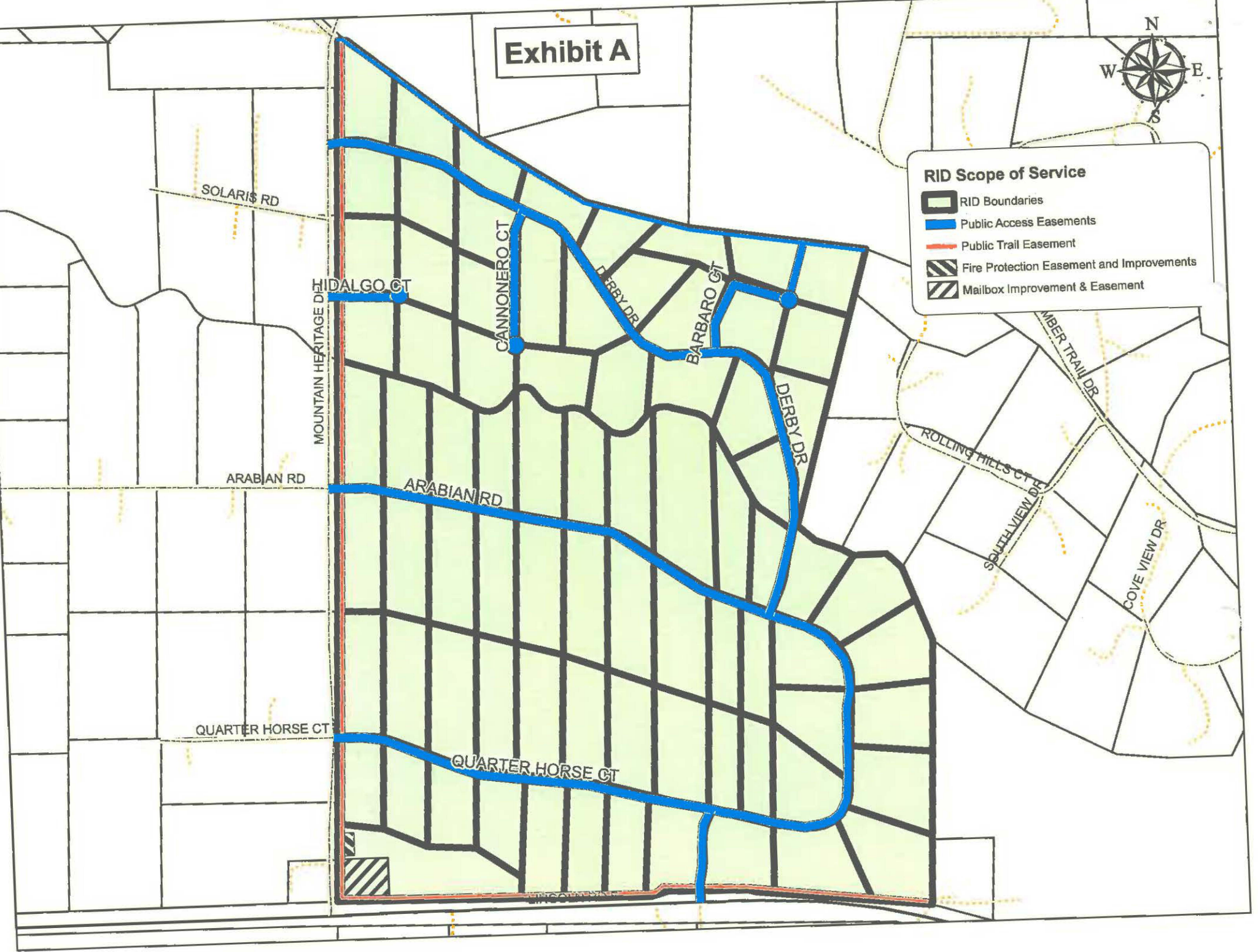


Exhibit B

Property ID Number	Site Address	Owner Name	Property Legal Description	Annual Assessment Amount
199513106130000 3267	QUARTER HORSE CT	BIRKELAND THOMAS & STEPHANIE	PANORAMIC MEADOWS SUBDIVISION, S13, T11 N, R03 W, Lot 67, COS #3149238	\$396.35
199513101110000 5673	DERBY DR	CASTLE REEF DEVELOPMENT LLC	PANORAMIC MEADOWS SUBDIVISION, S13, T11 N, R03 W, Lot 53, COS #3149238	\$396.35
199513101130000 5687	DERBY DR	CASTLE REEF DEVELOPMENT LLC	PANORAMIC MEADOWS SUBDIVISION, S13, T11 N, R03 W, Lot 52, COS #3149238 & 3202897	\$396.35
199513101150000 5699	DERBY DR	CASTLE REEF DEVELOPMENT LLC	PANORAMIC MEADOWS SUBDIVISION, S13, T11 N, R03 W, Lot 50, COS #3149238 & 3202897	\$396.35
199513102010000 5741	DERBY DR	CASTLE REEF DEVELOPMENT LLC	PANORAMIC MEADOWS SUBDIVISION, S13, T11 N, R03 W, Lot 27, COS #3149238	\$396.35
199513102030000 5757	DERBY DR	CASTLE REEF DEVELOPMENT LLC	PANORAMIC MEADOWS SUBDIVISION, S13, T11 N, R03 W, Lot 23, COS #3149238	\$396.35
199513102050000 5795	BARBARO CT	CASTLE REEF DEVELOPMENT LLC	PANORAMIC MEADOWS SUBDIVISION, S13, T11 N, R03 W, Lot 26, COS #3149238	\$396.35
199513103030000 5788	BARBARO CT	CASTLE REEF DEVELOPMENT LLC	PANORAMIC MEADOWS SUBDIVISION, S13, T11 N, R03 W, Lot 20, COS #3149238	\$396.35
199513103070000 5805	DERBY DR	CASTLE REEF DEVELOPMENT LLC	PANORAMIC MEADOWS SUBDIVISION, S13, T11 N, R03 W, Lot 19, COS #3149238	\$396.35
199513103090000 5813	DERBY DR	CASTLE REEF DEVELOPMENT LLC	PANORAMIC MEADOWS SUBDIVISION, S13, T11 N, R03 W, Lot 16, COS #3149238	\$396.35
199513103110000 5825	DERBY DR	CASTLE REEF DEVELOPMENT LLC	PANORAMIC MEADOWS SUBDIVISION, S13, T11 N, R03 W, Lot 15, COS #3149238	\$396.35
199513103130000 5837	DERBY DR	CASTLE REEF DEVELOPMENT LLC	PANORAMIC MEADOWS SUBDIVISION, S13, T11 N, R03 W, Lot 9, COS #3149238	\$396.35
199513103150000 5859	DERBY DR	CASTLE REEF DEVELOPMENT LLC	PANORAMIC MEADOWS SUBDIVISION, S13, T11 N, R03 W, Lot 8, COS #3149238	\$396.35
199513103170000 5871	DERBY DR	CASTLE REEF DEVELOPMENT LLC	PANORAMIC MEADOWS SUBDIVISION, S13, T11 N, R03 W, Lot 1, COS #3149238	\$396.35
199513104010000 3204	ARABIAN RD	CASTLE REEF DEVELOPMENT LLC	PANORAMIC MEADOWS SUBDIVISION, S13, T11 N, R03 W, Lot 30, COS #3149238	\$396.35
199513104050000 3228	ARABIAN RD	CASTLE REEF DEVELOPMENT LLC	PANORAMIC MEADOWS SUBDIVISION, S13, T11 N, R03 W, Lot 34, COS #3149238	\$396.35
199513104070000 3240	ARABIAN RD	CASTLE REEF DEVELOPMENT LLC	PANORAMIC MEADOWS SUBDIVISION, S13, T11 N, R03 W, Lot 36, COS #3149238	\$396.35
199513104090000 3252	ARABIAN RD	CASTLE REEF DEVELOPMENT LLC	PANORAMIC MEADOWS SUBDIVISION, S13, T11 N, R03 W, Lot 38, COS #3149238	\$396.35
199513104110000 3264	ARABIAN RD	CASTLE REEF DEVELOPMENT LLC	PANORAMIC MEADOWS SUBDIVISION, S13, T11 N, R03 W, Lot 40, COS #3149238	\$396.35
199513104130000 3276	ARABIAN RD	CASTLE REEF DEVELOPMENT LLC	PANORAMIC MEADOWS SUBDIVISION, S13, T11 N, R03 W, Lot 42, COS #3149238	\$396.35
199513104210000 5730	DERBY DR	CASTLE REEF DEVELOPMENT LLC	PANORAMIC MEADOWS SUBDIVISION, S13, T11 N, R03 W, Lot 29, COS #3149238 & 3202897	\$396.35
199513104250000 5764	DERBY DR	CASTLE REEF DEVELOPMENT LLC	PANORAMIC MEADOWS SUBDIVISION, S13, T11 N, R03 W, Lot 22, COS #3149238	\$396.35
199513104290000 5802	DERBY DR	CASTLE REEF DEVELOPMENT LLC	PANORAMIC MEADOWS SUBDIVISION, S13, T11 N, R03 W, Lot 17, COS #3149238	\$396.35
199513104310000 5824	DERBY DR	CASTLE REEF DEVELOPMENT LLC	PANORAMIC MEADOWS SUBDIVISION, S13, T11 N, R03 W, Lot 14, COS #3149238	\$396.35
199513104350000 5778	CANNONERO CT	LATKA MICHAEL R. & KAREN J.	PANORAMIC MEADOWS SUBDIVISION, S13, T11 N, R03 W, Lot 12, COS #3149238	\$396.35
199513104370000 5792	CANNONERO CT	CASTLE REEF DEVELOPMENT LLC	PANORAMIC MEADOWS SUBDIVISION, S13, T11 N, R03 W, Lot 11, COS #3149238	\$396.35
199513104390000 5830	DERBY DR	CASTLE REEF DEVELOPMENT LLC	PANORAMIC MEADOWS SUBDIVISION, S13, T11 N, R03 W, Lot 10, COS #3149238	\$396.35
199513104410000 5856	DERBY DR	CASTLE REEF DEVELOPMENT LLC	PANORAMIC MEADOWS SUBDIVISION, S13, T11 N, R03 W, Lot 7, COS #3149238	\$396.35
199513104430000 5872	DERBY DR	CASTLE REEF DEVELOPMENT LLC	PANORAMIC MEADOWS SUBDIVISION, S13, T11 N, R03 W, Lot 2, COS #3149238	\$396.35
199513104450000 3210	HIDALGO CT	CASTLE REEF DEVELOPMENT LLC	PANORAMIC MEADOWS SUBDIVISION, S13, T11 N, R03 W, Lot 3, COS #3149238	\$396.35
199513105210000 5632	DERBY DR	CASTLE REEF DEVELOPMENT LLC	PANORAMIC MEADOWS SUBDIVISION, S13, T11 N, R03 W, Lot 57, COS #3149238	\$396.35
199513105230000 5658	DERBY DR	CASTLE REEF DEVELOPMENT LLC	PANORAMIC MEADOWS SUBDIVISION, S13, T11 N, R03 W, Lot 55, COS #3149238	\$396.35
199513105330000 3277	ARABIAN RD	CASTLE REEF DEVELOPMENT LLC	PANORAMIC MEADOWS SUBDIVISION, S13, T11 N, R03 W, Lot 43, COS #3149238	\$396.35
199513106010000 5613	MOUNTAIN HERITAGE DR	CASTLE REEF DEVELOPMENT LLC	PANORAMIC MEADOWS SUBDIVISION, S13, T11 N, R03 W, Lot 79, COS #3149238	\$396.35
199513106070000 3231	QUARTER HORSE CT	CASTLE REEF DEVELOPMENT LLC	PANORAMIC MEADOWS SUBDIVISION, S13, T11 N, R03 W, Lot 73, COS #3149238	\$396.35
199513106110000 3255	QUARTER HORSE CT	CHRISTIANSON CARL & KELSIE	PANORAMIC MEADOWS SUBDIVISION, S13, T11 N, R03 W, Lot 69, COS #3149238	\$396.35
199513103010000 5792	BARBARO CT	CURTIS FARM INC	PANORAMIC MEADOWS SUBDIVISION, S13, T11 N, R03 W, Lot 24, COS #3149238	\$396.35
199513104330000 5779	CANNONERO CT	CURTIS FARM INC	PANORAMIC MEADOWS SUBDIVISION, S13, T11 N, R03 W, Lot 13, COS #3149238	\$396.35
199513105370000 3253	ARABIAN RD	CURTIS FARM INC	PANORAMIC MEADOWS SUBDIVISION, S13, T11 N, R03 W, Lot 39, COS #3149238	\$396.35
199513103050000 5777	BARBARO CT	CURTIS FARM INC & CASTLE REEF DEVELOPMENT LLC	PANORAMIC MEADOWS SUBDIVISION, S13, T11 N, R03 W, Lot 21, COS #3149238	\$396.35
199513104510000 3205	HIDALGO CT	CURTIS FARM INC & CASTLE REEF DEVELOPMENT LLC	PANORAMIC MEADOWS SUBDIVISION, S13, T11 N, R03 W, Lot 4, COS #3149238	\$396.35
199513102070000 5796	BARBARO CT	CURTIS GREGORY L	PANORAMIC MEADOWS SUBDIVISION, S13, T11 N, R03 W, Lot 25, COS #3149238	\$396.35
199513104030000 3216	ARABIAN RD	CURTIS JEFFREY G	PANORAMIC MEADOWS SUBDIVISION, S13, T11 N, R03 W, Lot 32, COS #3149238	\$396.35
199513104170000 3300	ARABIAN RD	CURTIS JEFFREY G	PANORAMIC MEADOWS SUBDIVISION, S13, T11 N, R03 W, Lot 46, COS #3149238	\$396.35

Exhibit B

Property ID Number	Site Address	Owner Name	Property Legal Description	Annual Assessment Amount
199513104230000 5750	DERBY DR	CURTIS JEFFREY G	PANORAMIC MEADOWS SUBDIVISION, S13, T11 N, R03 W, Lot 28, COS #3149238	\$396.35
199513101030000 5627	DERBY DR	CURTIS LAURA ANN	PANORAMIC MEADOWS SUBDIVISION, S13, T11 N, R03 W, Lot 59, COS #3149238	\$396.35
199513104470000 3220	HIDALGO CT	CURTIS TODD A	PANORAMIC MEADOWS SUBDIVISION, S13, T11 N, R03 W, Lot 6, COS #3149238	\$396.35
199513104490000 3215	HIDALGO CT	CURTIS TODD A	PANORAMIC MEADOWS SUBDIVISION, S13, T11 N, R03 W, Lot 5, COS #3149238	\$396.35
199513101070000 5651	DERBY DR	DAMUTH KEVIN W & MONIQUE L	PANORAMIC MEADOWS SUBDIVISION, S13, T11 N, R03 W, Lot 56, COS #3149238	\$396.35
199513105030000 3218	QUARTER HORSE CT	FORKAN SHEA A	PANORAMIC MEADOWS SUBDIVISION, S13, T11 N, R03 W, Lot 76, COS #3149238	\$396.35
199513105190000 5622	DERBY DR	GROTBO BENJAMIN M & TATIYANA N	PANORAMIC MEADOWS SUBDIVISION, S13, T11 N, R03 W, Lot 60, COS #3149238	\$396.35
199513105130000 3278	QUARTER HORSE CT	HILL RICHARD J & JOCELYN R	PANORAMIC MEADOWS SUBDIVISION, S13, T11 N, R03 W, Lot 66, COS #3149238	\$396.35
199513105450000 3205	ARABIAN RD	HILTUNEN CHRISTOPHER P & MELISSA A	PANORAMIC MEADOWS SUBDIVISION, S13, T11 N, R03 W, Lot 31, COS #3149238	\$396.35
199513101090000 5663	DERBY DR	HUSEBY LEONARD & RHONDA	PANORAMIC MEADOWS SUBDIVISION, S13, T11 N, R03 W, Lot 54, COS #3149238	\$396.35
199513105270000 3313	ARABIAN RD	HUTCHISON CARL J & THERESA M	PANORAMIC MEADOWS SUBDIVISION, S13, T11 N, R03 W, Lot 49, COS #3149238	\$396.35
199513105390000 3241	ARABIAN RD	KAILEY DWANE E & LEAH M	PANORAMIC MEADOWS SUBDIVISION, S13, T11 N, R03 W, Lot 37, COS #3149238	\$396.35
199513105090000 3254	QUARTER HORSE CT	KAVAJECZ JAMES J & NATALIE B	PANORAMIC MEADOWS SUBDIVISION, S13, T11 N, R03 W, Lot 70, COS #3149238	\$396.35
199513105070000 3242	QUARTER HORSE CT	KERKES JOSEPH R & KORI L	PANORAMIC MEADOWS SUBDIVISION, S13, T11 N, R03 W, Lot 72, COS #3149238	\$396.35
199513105010000 3206	QUARTER HORSE CT	KREI JOLEEN & HAROLD	PANORAMIC MEADOWS SUBDIVISION, S13, T11 N, R03 W, Lot 78, COS #3149238	\$396.35
199513104190000 3312	ARABIAN RD	LAROQUE CURTIS DEAN & ROXANNE	PANORAMIC MEADOWS SUBDIVISION, S13, T11 N, R03 W, Lot 48, COS #3149238 & 3202897	\$396.35
199513105290000 3301	ARABIAN RD	MCGOWAN DANIEL	PANORAMIC MEADOWS SUBDIVISION, S13, T11 N, R03 W, Lot 47, COS #3149238	\$396.35
199513105170000 5614	DERBY DR	MULDER HOMES INC	PANORAMIC MEADOWS SUBDIVISION, S13, T11 N, R03 W, Lot 62, COS #3149238	\$396.35
199513105250000 5684	DERBY DR	MULDER HOMES INC	PANORAMIC MEADOWS SUBDIVISION, S13, T11 N, R03 W, Lot 51, COS #3149238	\$396.35
199513105150000 3290	QUARTER HORSE CT	NIDERMAIER WILLIAM E & MYRA	PANORAMIC MEADOWS SUBDIVISION, S13, T11 N, R03 W, Lot 64, COS #3149238	\$396.35
199513106090000 3243	QUARTER HORSE CT	NOTTINGHAM KATHERINE	PANORAMIC MEADOWS SUBDIVISION, S13, T11 N, R03 W, Lot 71, COS #3149238	\$396.35
199513106050000 3219	QUARTER HORSE CT	PANCOAST JAMES PATRICK & JONI ELLEN	PANORAMIC MEADOWS SUBDIVISION, S13, T11 N, R03 W, Lot 75, COS #3149238	\$396.35
199513105050000 3230	QUARTER HORSE CT	PEDRAZZI JEB C & CHRISTY L	PANORAMIC MEADOWS SUBDIVISION, S13, T11 N, R03 W, Lot 74, COS #3149238	\$396.35
199513106030000 3207	QUARTER HORSE CT	PERROS NICK C	PANORAMIC MEADOWS SUBDIVISION, S13, T11 N, R03 W, Lot 77, COS #3149238	\$396.35
199513105410000 3229	ARABIAN RD	POCHA BRANDON P & CRAWFORD KELSEY J	PANORAMIC MEADOWS SUBDIVISION, S13, T11 N, R03 W, Lot 35, COS #3149238	\$396.35
199513104150000 3288	ARABIAN RD	RICHARDS CARL K & DENISE M	PANORAMIC MEADOWS SUBDIVISION, S13, T11 N, R03 W, Lot 44, COS #3149238	\$396.35
199513106170000 3291	QUARTER HORSE CT	RICHARDS CHAD & LISA	PANORAMIC MEADOWS SUBDIVISION, S13, T11 N, R03 W, Lot 63, COS #3149238	\$396.35
199513101050000 5639	DERBY DR	RUSSELL SPENCER E & DIANE L	PANORAMIC MEADOWS SUBDIVISION, S13, T11 N, R03 W, Lot 58, COS #3149238	\$396.35
199513106150000 3279	QUARTER HORSE CT	SCHULTZ CHRISTINE H E & JAMES R	PANORAMIC MEADOWS SUBDIVISION, S13, T11 N, R03 W, Lot 65, COS #3149238	\$396.35
199513105350000 3265	ARABIAN RD	SMITH DAVID R & COLEEN L	PANORAMIC MEADOWS SUBDIVISION, S13, T11 N, R03 W, Lot 41, COS #3149238	\$396.35
199513105110000 3266	QUARTER HORSE CT	SNOOK KENT M & GAYLE M	PANORAMIC MEADOWS SUBDIVISION, S13, T11 N, R03 W, Lot 68, COS #3149238	\$396.35
199513104270000 5786	DERBY DR	THAUT KURT & BETH K	PANORAMIC MEADOWS SUBDIVISION, S13, T11 N, R03 W, Lot 18, COS #3149238	\$396.35
199513105310000 3289	ARABIAN RD	THOMPSON DERRICK & HEATHER	PANORAMIC MEADOWS SUBDIVISION, S13, T11 N, R03 W, Lot 45, COS #3149238	\$396.35
199513101010000 5615	DERBY DR	WILLIAMS EDWARD L	PANORAMIC MEADOWS SUBDIVISION, S13, T11 N, R03 W, Lot 61, COS #3149238	\$396.35
199513105430000 3217	ARABIAN RD	WULCHAK DANNA-MARIE L & KIRK E	PANORAMIC MEADOWS SUBDIVISION, S13, T11 N, R03 W, Lot 33, COS #3149238	\$396.35
Total Annual Assessment				\$31,311.65