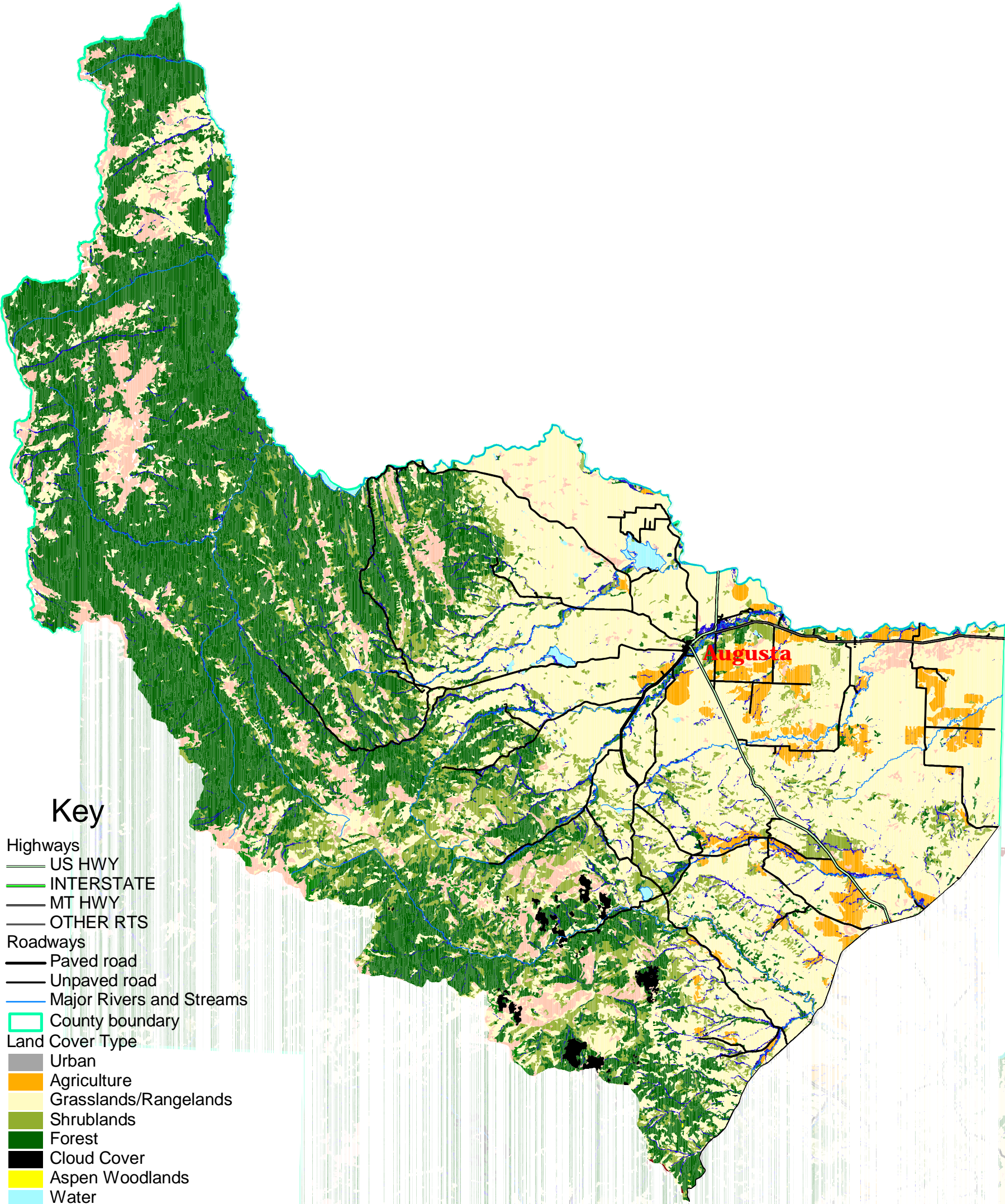


Land Cover Types Augusta Planning Area



Key

- Highways
 - US HWY
 - INTERSTATE
 - MT HWY
 - OTHER RTS
- Roadways
 - Paved road
 - Unpaved road
- Major Rivers and Streams
- County boundary
- Land Cover Type
 - Urban
 - Agriculture
 - Grasslands/Rangelands
 - Shrublands
 - Forest
 - Cloud Cover
 - Aspen Woodlands
 - Water
 - Riparian Zones
 - Mines/Quarries
 - Barren
 - Alpine Meadows
 - Ice or Snow



0 5 10 15 Miles

Data source: Montana Gap Analysis
data filename: g:\natural\vegetation\landcov2

Lewis & Clark County Comprehensive Plan

