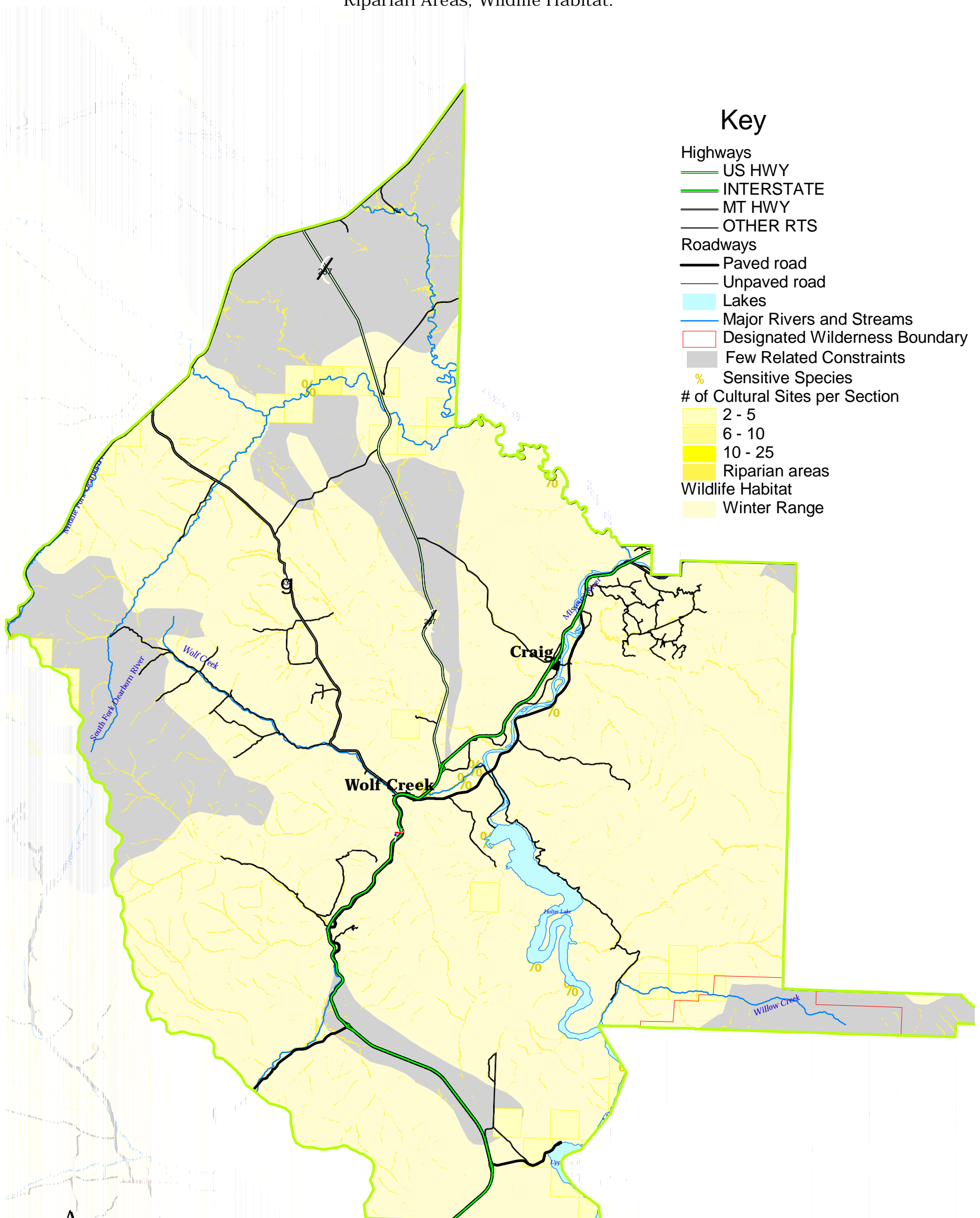


Wolf Creek - Craig Planning Area

Resource Inventory

Group "A":
Sensitive Species, Cultural Sites,
Riparian Areas, Wildlife Habitat.



Key

- Highways
 - US HWY
 - INTERSTATE
 - MT HWY
 - OTHER RTS
- Roadways
 - Paved road
 - Unpaved road
- Lakes
- Major Rivers and Streams
- Designated Wilderness Boundary
- Few Related Constraints
- % Sensitive Species
- # of Cultural Sites per Section
 - 2 - 5
 - 6 - 10
 - 10 - 25
- Riparian areas
- Wildlife Habitat
 - Winter Range

