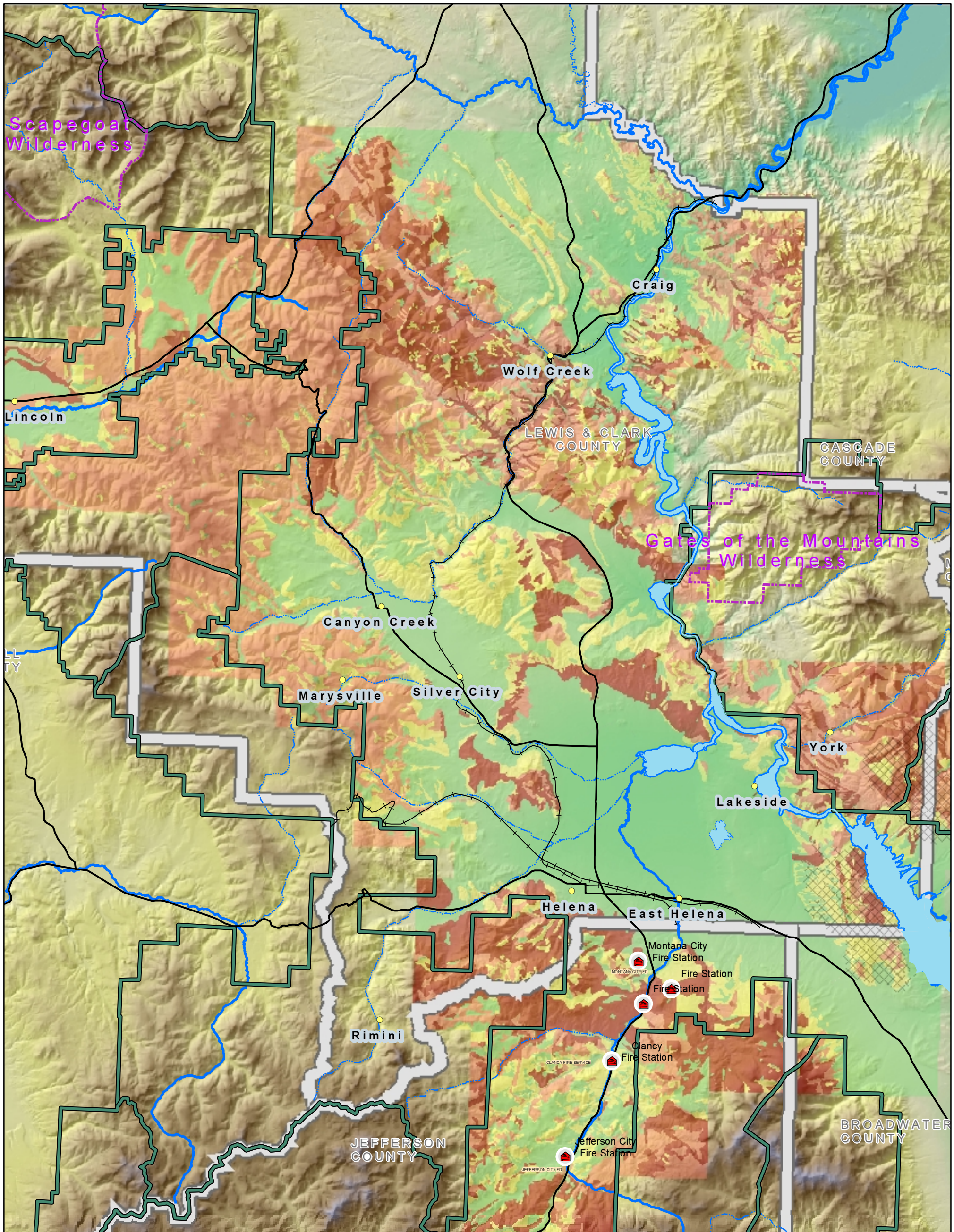


Fuel Hazard Rating

Tri-County Area
Montana
2002

Counties of
Broadwater
Jefferson
Lewis & Clark



Note:
Ratings are based on slope and wildland fuel conditions at the time of the surveys. Hazard ratings are general and can be reduced.

FOR MORE INFORMATION ABOUT REDUCING YOUR RISK OF DESTRUCTIVE WILDFIRE CONTACT YOUR LOCAL FIRE DEPARTMENT OR: the Montana Department of Natural Resources (DNRC) (406) 444-3633 the US Forest Service (USFS), Helena (406) 449-5490

FIELD WORK PERFORMED BY
Montana Prescribed Fire Services, Inc. (MPFS) (406) 248-8307 HQ, or (406) 235-4485 Field Office.

Fuel Hazard Rating

- X - High to Severe fuel hazard with potential for high intensity fire and extreme rates of spread. Fuels can be readily reduced to a less severe state on slopes less than 30%.
- C - High fuel hazard with potential for high intensity fire. Fuels can be reduced to a less severe state on slopes less than 30%.
- B - Medium fuel hazard. Minimal fuel reduction need to reduce to a less severe state.
- A - Low fuel hazard with potential for fast spreading fires when grass is dry.



0 0.45 0.9 1.8 2.7 3.6 4.5 Miles

printed August 21, 2002



City of Helena - Lewis & Clark County
Geographic Information Services
107 City Center Building
316 North Park Avenue
Helena, Montana 59624
406.447.8347
www.ci.helena.mt.us/gis