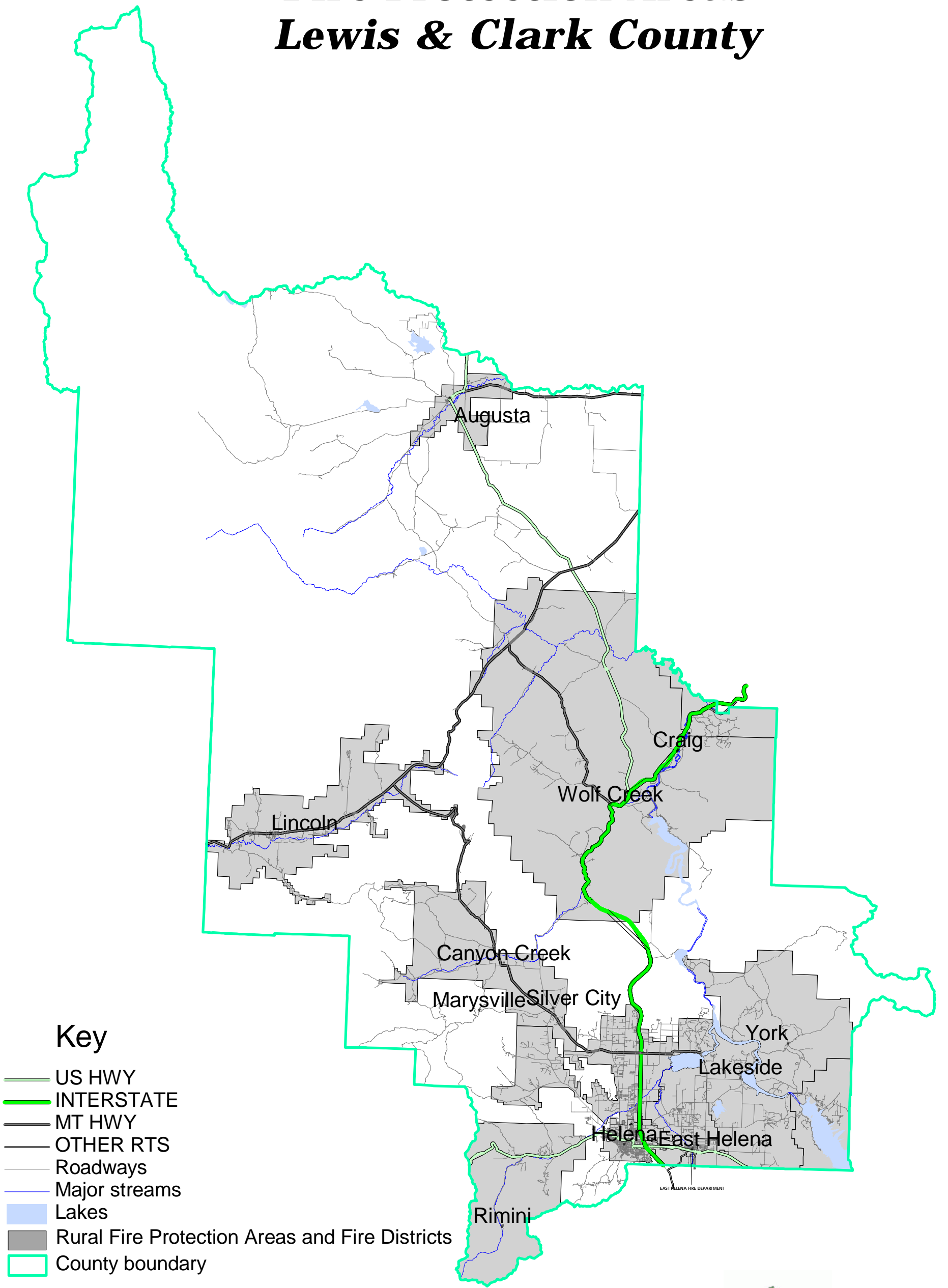








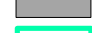


# Fire Protection Areas Lewis & Clark County



## Key

-  US HWY
-  INTERSTATE
-  MT HWY
-  OTHER RTS
-  Roadways
-  Major streams
-  Lakes
-  Rural Fire Protection Areas and Fire Districts
-  County boundary



0 7 14 21 Miles



Data source: Digitized from legal descriptions and the TIGER files PLSS by the L&C GIS.  
 data filename: g:\districts\ruralfire\fds-all.shp  
 Lewis & Clark County Comprehensive Plan

