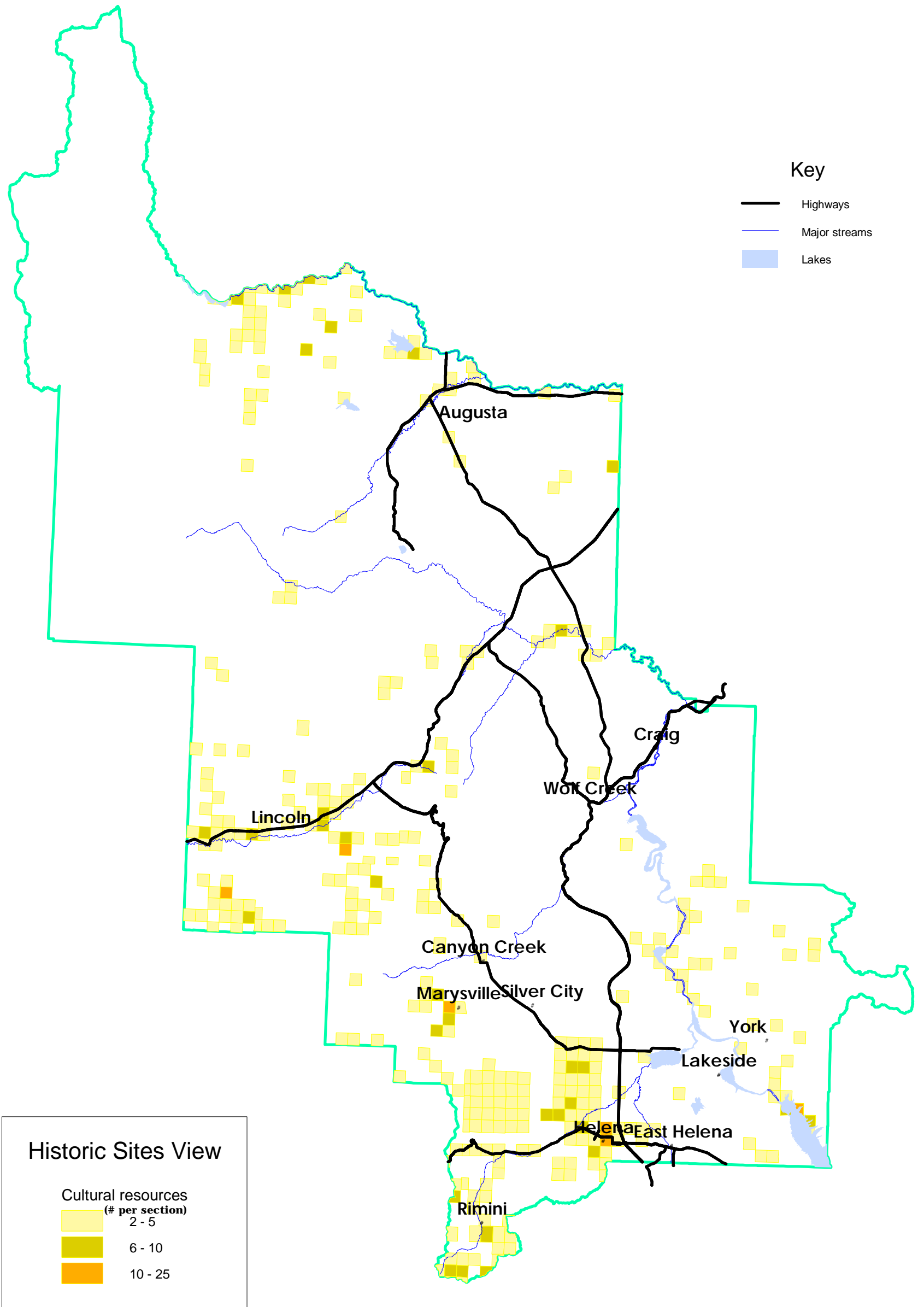








# Cultural Resources Lewis & Clark County



### Key

-  Highways
-  Major streams
-  Lakes

### Historic Sites View

- Cultural resources  
(# per section)
-  2 - 5
  -  6 - 10
  -  10 - 25



Data source: NRIS at the Montana State Library.

data filename: g:\cultural\histo.shp

Lewis & Clark County Comprehensive Plan

